

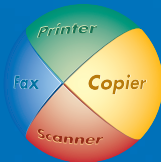
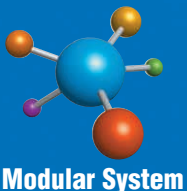
SHARP

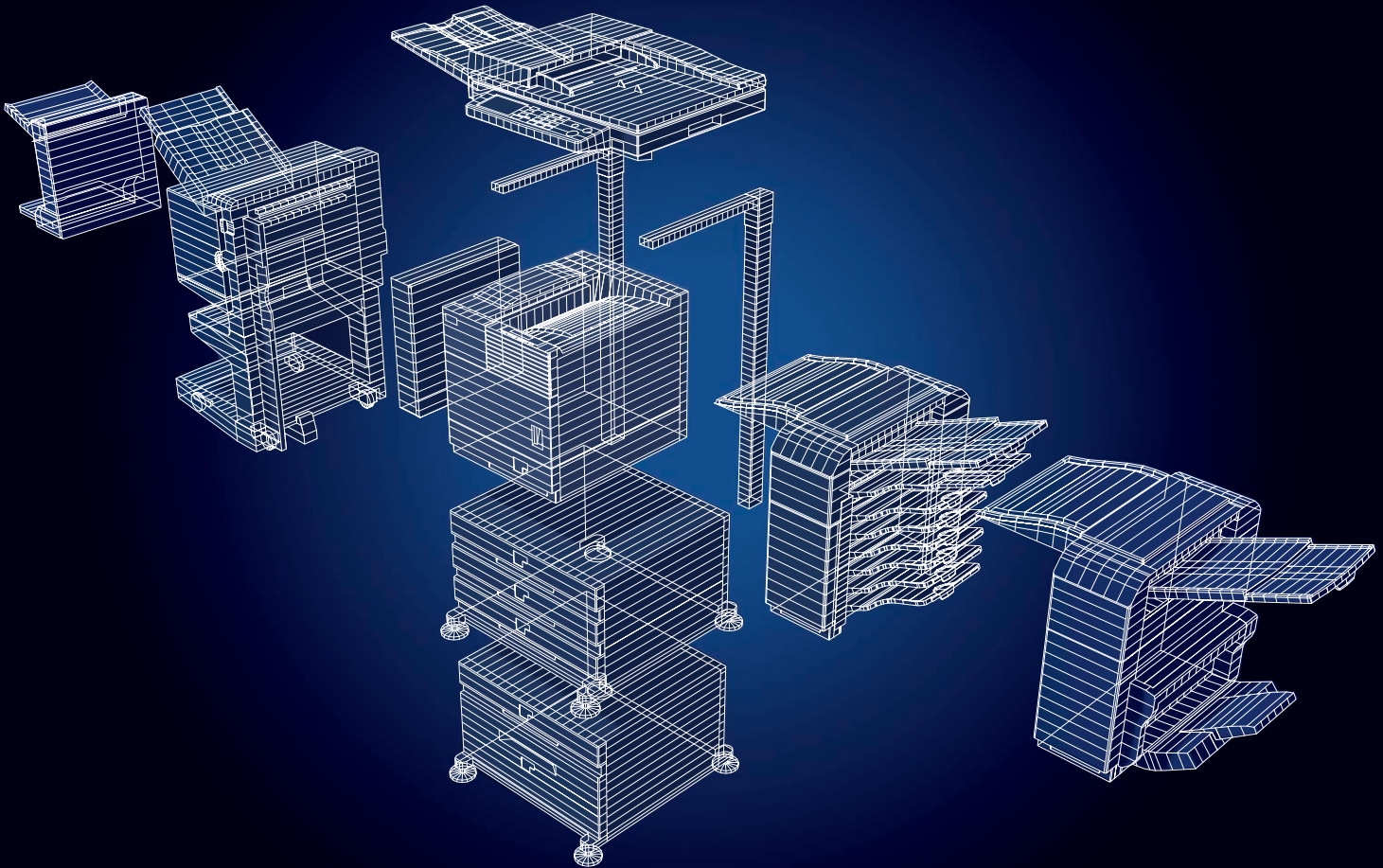
AR-M350N

Digital Laser Printer



The User-Friendly Office All-Rounder with Network Capability





The Choice Is Yours – Custom-Made, Ideal Solutions

In today's digital workplaces, nothing is more essential to the success of your business than flexibility. Luckily, flexibility is exactly what SHARP's AR-M350N delivers. For a start, this multi-function system gives you the ability to print, copy, scan, and fax. And, because it's fully-modular, the AR-M350N lets you customise a set-up that perfectly matches the specific needs of your office. Best of all, though, the AR-M350N is network-ready. Now everyone in your office can enjoy the convenience and functionality of a top-quality document creator.

Basic Model

Creates high-quality documents for your office.



Duplex Model

Reduces paper waste and increases convenience.



Duplex/Finisher Model

Automates burdensome chores for you.



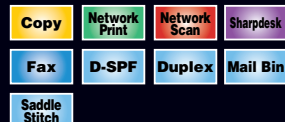
Duplex/Network Model

Centralises document creation in the networked office.



Full-Function Model

Covers all your document needs in the networked office.



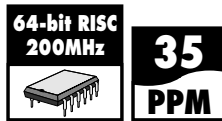
The High Performance Network Printer for Today's Offices

The intelligent AR-M350N easily handles the printing demands of today's digitally networked offices. Practical features ensure smooth, uninterrupted printing, while the AR-M350N's modular options enhance productivity and efficiency in your networked office. With its impressive range of powerful and convenient features, you'll see why the AR-M350N is the printing solution you've been looking for.

HIGH PERFORMANCE PRINTING

High-Speed Printing & Data Processing

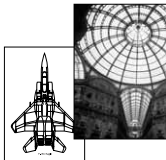
The AR-M350N boasts a continuous print rate of 35 ppm*, ensuring speedy and efficient printing in the networked office. The secret of high-speed printing on the AR-M350N is its 64-bit RISC 200MHz processor, which allows even memory-intensive graphics documents to be processed promptly.



* A4 (8 1/2"x11"), Portrait.

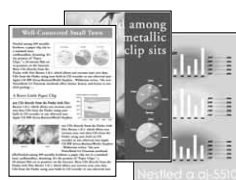
600dpi Crisp and Clear Documents

The AR-M350N's laser printer engine produces razor-sharp images and crisp, legible text at 600dpi resolution. Employing digital smoothing technology further enhances the resolution to the equivalent of 1200dpi. The AR-M350N comes complete with Photo Mode for detailed, fine-grained reproductions of photographs and halftone images. Superb quality print jobs that make your work look even better.



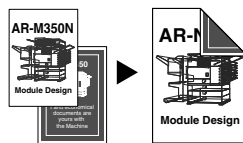
Compatible with HP™ PCL® 6 and PostScript® 3*1

Not only is the AR-M350N compatible with HP™ PCL®6, but, with the optional PS3 Expansion Kit, it can also handle the latest PDL, PostScript®3. The AR-M350N effortlessly manages even the most sophisticated documents.



Duplex Printing*1

Efficient and economical document creation is yours with the AR-M350N. Doing away with bulky files, duplex printing halves filing space and paper costs.



CONVENIENT PRINT FUNCTIONS

Priority Printing*1

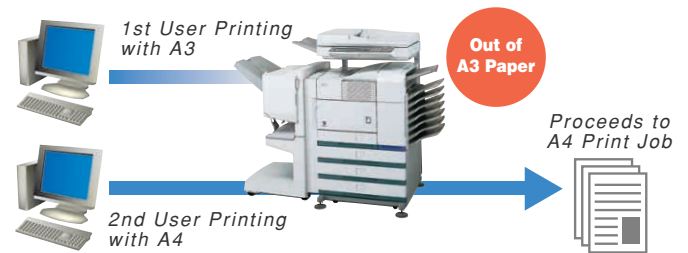
In the Job Status Mode, the operation panel displays a list of all jobs, whether printing, copying, scanning or faxing. See at a glance which job is in progress and where your job is in the queue. You can also change the print queue order with one touch of the LCD screen. Urgent jobs can receive priority, meaning you don't have to wait until other jobs are finished.



Job Status Mode

Bypass Printing

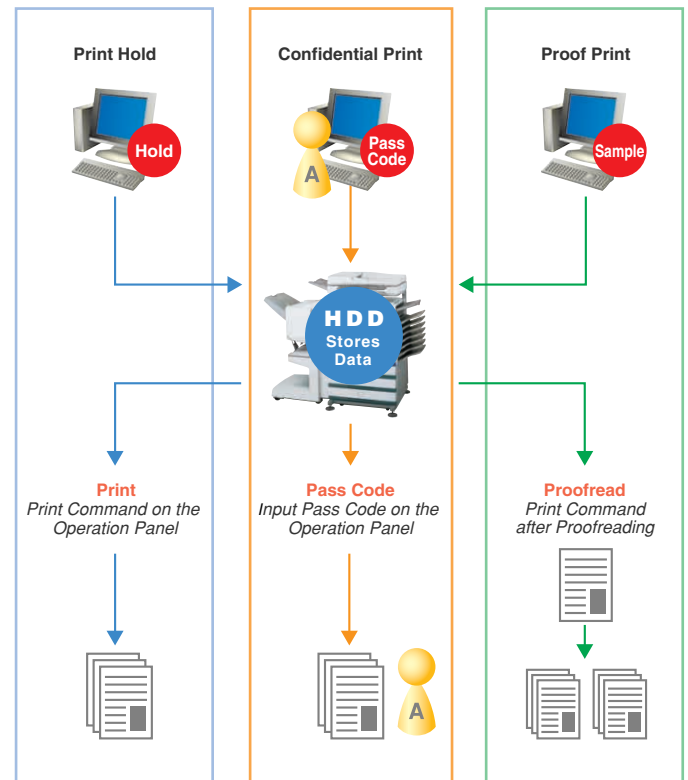
When conventional printers run out of the paper needed for a specific job, the machine grinds to a halt until it is reloaded. With the AR-M350N, however, you need never wait on someone else's job; the AR-M350N automatically proceeds to the next possible job in the queue.



Job Control Function*1

The AR-M350N can hold your printing job in the optional hard disk drive, giving you a host of printing conveniences.

- **Print Hold:** With the Job Control Function store your print job in the optional hard disk drive. When you want the documents, go to the AR-M350N and print them directly from its memory.
- **Confidential Print:** The Job Control Function also has a pass code setting to keep your sensitive documents away from prying eyes. Before printing the secure documents the AR-M350N will require verification.
- **Proof Print:** The AR-M350N allows you to check your work before printing it. Print a sample copy of the document, proofread it, and avoid problems of misprinting when doing large print runs.



*1 Options are required.



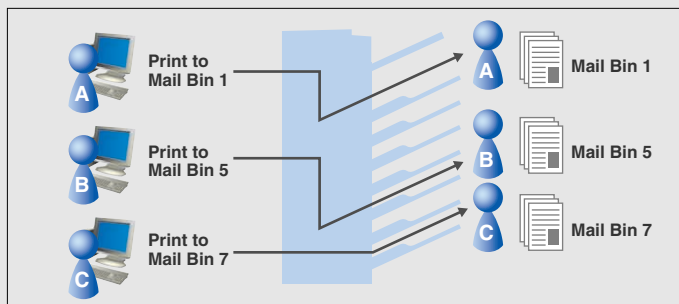
PRODUCTIVE MODULAR OPTIONS

Automated Job Finishing*1

Choose the Finisher or Saddle Stitch Finisher option to automate time-consuming tasks such as sorting and stapling. In concert with the optional Duplex Single Pass Feeder (DSPF) and Duplex Module, the Saddle Stitch Finisher automatically arranges page layout and makes booklets. It is also possible to make punched documents with the optional Punch Module. The AR-M350N lets you create professional-looking pamphlets with ease.

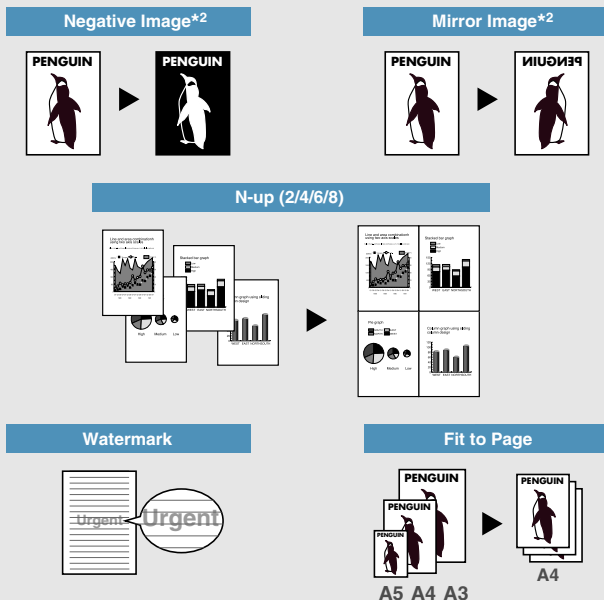
Mail Bin Stacker*1

The optional Mail Bin Stacker is ideal for offices where large groups of people use the same machine. When printing, avoid mixing up your documents with other people's by pre-selecting one of eight destination bins for your documents.



VARIOUS PRINTING FUNCTIONS

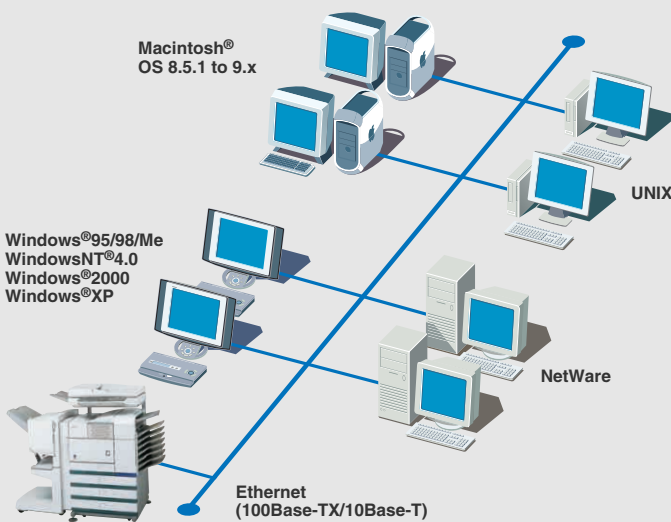
A host of versatile editing functions allow you to create a wide range of documents.



POWERFUL NETWORKING

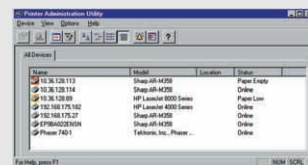
Smooth, Seamless Network Printing

The AR-M350N can support both 100Base-TX and 10Base-T networks. Heavy network traffic is no problem for the AR-M350N – get used to a smooth flow of documents in your networked office. The AR-M350N also handles mixed-OS environments with ease. It supports any combination of Windows®95/98/Me, WindowsNT®4.0, Windows®2000, Windows®XP and Macintosh® OS 8.5.1 to 9.x*3. No more cross-platform hassles.



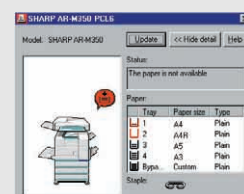
Printer Administration Utility*4

This handy utility software allows network administrators to check the printing status or change the IP address directly from the print server's monitor.



Stay Informed on Printer Status*4

The Printer Status Monitor keeps you informed on the AR-M350N's operating conditions. Find out immediately the available paper type, size and quantity and know whether the AR-M350N is ready for your print job.



OTHER FUNCTIONS

- Binding Edge Function
- Transparency Inserts
- Overlay Function
- Paper Source & Output Tray Selection
- Toner Save Mode
- Auto Power Shut-Off Mode
- Key Operator Programme
- Process Cartridge for easy maintenance
- Toner Recycling System for reduced running cost

*1 Options are required. *2 Optional AR-PK1 is required. *3 Optional AR-PK1 is required for Macintosh®. *4 Available in Windows® environments only.

Enhance Productivity with Powerful Scanning

Clear up excess paper copies and enhance workflow in the networked office with the AR-M350N and its optional Network Scanner Expansion Kit. A speedy one-pass scanner converts your documents into digital files. Network users can then access those files using Sharpdesk™, a software package which smoothly handles all shared digital files. Streamline your business workflow and watch your document troubles evaporate.

SCAN TO DESKTOP/E-MAIL/FTP

To Desktop

With the optional Sharpdesk™ software package, the AR-M350N sends scanned documents directly to your PC without routing through a server. There's no need to go back and forth between the scanner and your PC to transfer data.

To E-Mail

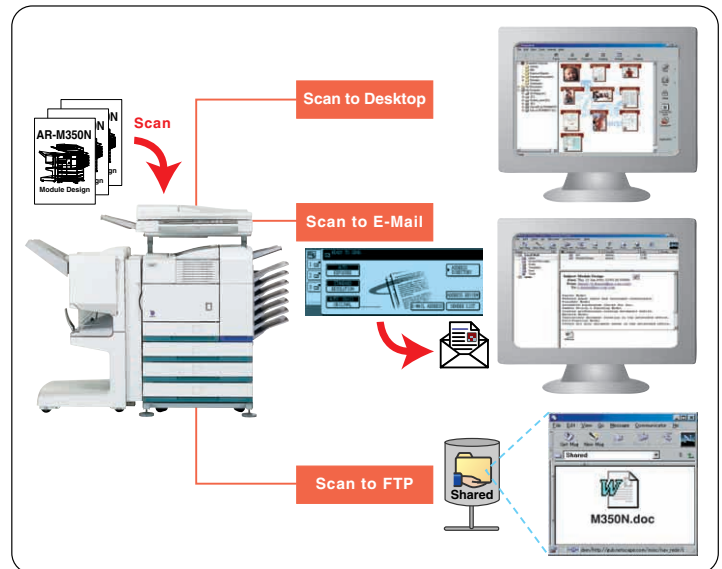
Use the AR-M350N to send scanned documents as e-mail attachments. Unlike fax transmission, this time-saver lets you send a document directly to the intended recipient while maintaining the original image quality.

To FTP Server

The AR-M350N also enables scanned documents to be stored on a file server. This electronic filing system makes it easy for all network users to share information without resorting to excessive paper clutter.

TWAIN Compliant

Scanned documents sent to PCs installed with Sharpdesk™ via the Scan to Desktop function are easily converted into TWAIN compatible files.



SHARPDASK™

Sharpdesk™ takes knowledge sharing to a higher level. With its simple drag-and-drop operation it lets you handle over 200 different file types, streamlining the process of document creation. Bring seamless document management to your networked office with Sharpdesk™.

User-Friendly Operation

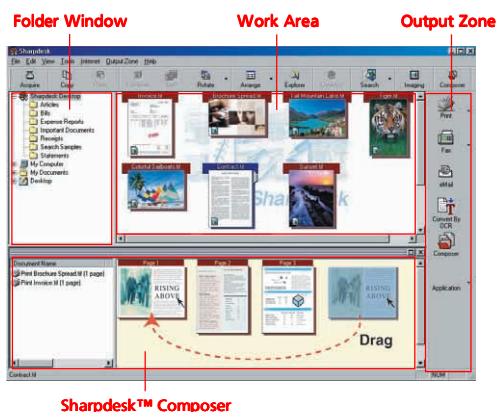
File Storage: The folder window for Sharpdesk™ displays stored files in a neatly organised directory, clearly guiding you to the document or image you want.

Thumbnail: Sharpdesk™ can display thumbnail icons for over 200 types of file, including TIFF, JPEG and BMP, giving you the convenience of browsing through your documents without having to open them.

Powerful Search: Whether you use a single word, a phrase, or a list of words as your search key, Sharpdesk™ helps you quickly find the file you need. Not only does it retrieve regular text files, it also retrieves image files that have been converted by OCR into editable text files.

Output: With simple drag-and-drop operation, Sharpdesk™ enables printing of documents directly from your desktop. It also allows documents to be sent as e-mail attachments or converted to text files using built-in OCR.

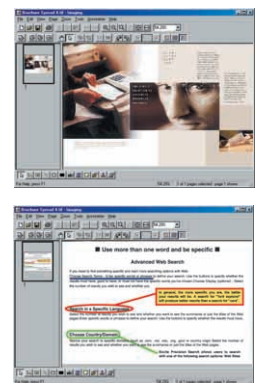
Sharpdesk™ Composer: Sharpdesk™ Composer enables you to drag-and-drop files from different types of applications and combine them into a single, print-ready document. You can also change the page order just as easily.



Sharpdesk™ Imaging

A Variety of Imaging Operations: Sharpdesk™ Imaging provides a range of useful editing functions – such as combine, split, rotate, and draw – which you can access via a menu or via tool buttons.

Paper-Free Proofreading: Without overwriting the original file, you can add comments to a document with the Annotation Function. Network users can proofread shared documents, adding labels, stamps, marks or rectangles to the digital copy without making numerous paper copies.



Intelligent Filing

The AR-M350N is not only a hard worker, it's a smart assistant. When sending scanned files to PCs installed with Sharpdesk™, the AR-M350N automatically launches Sharpdesk™ to place the files in their designated folders.

SHARPDASK™ SYSTEM REQUIREMENTS

CPU	Pentium™ 133MHz or greater (Pentium™ 200MHz or greater recommended)
Memory	32MB or more (64MB recommended)
Hard Disc	110MB or more
Video	SVGA (800 x 600) or higher resolution, 256 colour (True Color recommended)
Supported OS	Windows®95*/98/Me, Windows NT®4.0*2, Windows®2000*3, Windows®XP*4
Protocol	TCP/IP*5

*1 WinSock2 is required for auto-detection of network scanner.

*2 Service Pack4 is required.

*3 Latest OS version with minor updates after release may not be compatible with some versions of Sharpdesk™.

*4 Operates under Windows®XP but without the certification of Microsoft® Windows® Hardware Quality Labs (WHQL).

*5 Required when using Scan to Desktop function in networked environment.

*1 Available in Windows® environments only. Optional AR-NS2 is required.

Automatic Features Reduce Work

With its wide selection of helpful options, the AR-M350N is a document-creating powerhouse. The optional Duplex Single Pass Feeder (DSPF) enhances productivity by allowing you to make documents quickly and efficiently. And handy finishing options automate the process from copying to finishing, saving you valuable time.

FUNCTIONAL COPYING

A3 (11" x 17") Duplex Scanning for Duplex Copying

Easily make duplex copies from double-sided documents with the optional Duplex Single Pass Feeder (DSPF), which enables document scanning up to A3 size (11" x 17"). The AR-M350N saves time by requiring only a single scan for double-sided documents. And by doing away with the reversing circuit, the AR-M350N prevents damage to documents. Enjoy hassle-free duplex copying and halve filing space and paper costs.



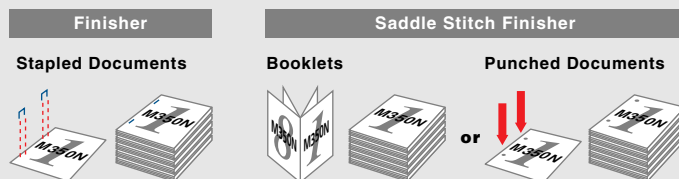
Document Finishing

Sort and staple documents automatically with the time-saving Finisher and Saddle Stitch Finisher options. After arranging the page order of scanned documents in its memory, the AR-M350N, in tandem with the optional Finisher, can staple up to 30 pages*¹. The Saddle Stitch Finisher option, meanwhile, can staple up to 50 pages*² and fold documents to make booklets. And with the optional Punch Module, it's possible to punch holes in documents. Both finishing options also automatically sort and separate copy runs for your convenience.



*¹ A4, B5, 8 1/2" x 11", 80 g/m².

*² A4 (8 1/2" x 11") or smaller. 128 g/m² (34 lbs.) x 2 + 80 g/m² (20 lbs.) x 48.



Electronic Sorting

The Electronic Sorting Function allows multiple sets of copied documents to be made quickly and efficiently. A single scan stores up to 50 pages* of a given document in the memory, allowing you to return to work on the original. The AR-M350N then uses the stored version to produce multiple sets of copies in the original order. Avoid the hassle of sorting and arranging pages after copying them with the intelligent AR-M350N.

* A4 (8 1/2" x 11").

Job Build for Large Volume Scanning

Even copy jobs exceeding 50 pages* are no trouble for the AR-M350N. A maximum of 140 pages* can be stored in lots of up to 50 pages at a time. They are then automatically sorted in the memory and can be subsequently printed out at your convenience. And with the optional hard disk drive, storage can be expanded to 10,000 pages* – easily enough to handle even the most demanding large volume jobs.

* A4 (8 1/2" x 11").

PRODUCTIVE COPYING

High-Speed Copying

The AR-M350N has a continuous copy rate of 35 cpm*, allowing it to quickly produce even large volumes of documents. High-speed copying to improve the workflow in your networked office. * A4 (8 1/2" x 11"), Portrait.



Quick First Copy Time

With its speedy first copy time of 5.3 seconds*, the AR-M350N allows you to pick up your copied documents with the minimum of delay, taking the stress out of urgent copy jobs.

* A4 (8 1/2" x 11"), 1st paper tray, Quick Scan mode, without HDD, and with Polygone mirror running.



Large Paper Capacity, Wide Paper Range

Meet your high-volume copying needs with one of two paper drawer options available, providing a paper capacity of up to 3,100 sheets.



Depending on your printing needs, the drawers can accommodate a wide range of paper sizes and types, including OHP transparencies and heavy stock*.



* Up to 205g/m² (55 lbs.) via the 1st tray of AR-D13 ND14 N.

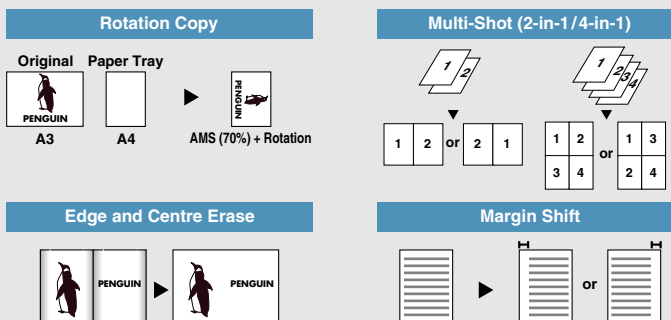
LCD Touch Panel with Animated Guide

The DSPF's touch-sensitive LCD panel makes operating the AR-M350N a breeze. The LCD panel displays the current job status, along with other operational information, to give you a clear overview of your work. Whether printing, copying, scanning or faxing, you'll enjoy a seamless, efficient workflow.



VARIOUS COPYING FUNCTIONS

The AR-M350N makes copying more convenient with its wide range of built-in functions.



- Automatic Paper Selection (APS)
- Automatic Magnification Selection (AMS)
- Auto Tray Switching
- Wide Zoom Range (25 to 400%)
- Audit Function up to 100 accounts
- Scan-to-Memory while Printing
- Dual Page Copy
- Job Programme

*¹ Options are required.

Faxing Has Never Been Easier

For the ultimate document all-rounder, top the AR-M350N off with fax functionality. Installing the optional Fax Expansion Kit enhances efficiency in your office by enabling high-speed Super G3 fax transmission. The versatile AR-M350N also supports the ITU-T F-Code standard, and offers you a host of convenient functions. Enjoy smooth fax operation, thanks to such easy-to-use functions as duplex document faxing and one-touch dialling.

LIGHTNING-FAST, HIGH-QUALITY FAXING

High-Speed Fax Transmission

The AR-M350N's high-speed Super G3 fax transmission formula allows you to send documents twice as fast as with the conventional G3 formula. And transmission times are faster still, thanks to the high-rate JBIG compression method. An A4 size (8 1/2" x 11") document, for example, can be sent speedily within three seconds*. The AR-M350N's high-speed transmission makes long distance or large volume faxing far more economical.

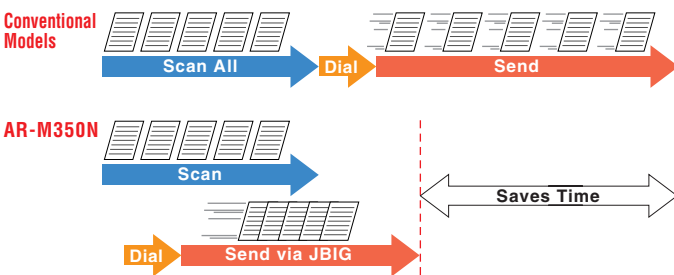
* Based on ITU-T test chart No. 1 at standard resolution. Data transmission time only, not including protocol transmission time.



Quick On-Line Transmission

Upon scanning the first page of your document through the optional Duplex Single Pass Feeder (DSPF), the AR-M350N starts dialling the fax destination immediately. Transmission begins while the remaining pages are being scanned, giving you much faster overall transmission times.

[NB] Quick on-line transmission is only possible if there are no other jobs waiting to be processed.



EFFICIENT FAX JOBS

Duplex Fax Transmission/Reception

Take your double-sided document, place it in the DSPF, and it will automatically scan both sides in a single pass. There's no need for either manual re-scanning or a reversing circuit: the DSPF lets you fax a double-sided A4 Portrait (8 1/2" x 11") in approximately 2 seconds at standard resolution. Of course, the AR-M350N doesn't just send double-sided faxes, it also receives them.



One-Touch Dialling of 500 Numbers

Up to 500 auto-dialling locations can be registered into one-touch keys in a customisable directory. There's no need to dial the whole number – just press a single key. And the alphabetical organisation of this directory makes it easier than ever to find a specific number. On top of this, you can register up to 300 separate numbers into a single group key*.

*Each group key is counted as one of the 500 one-touch keys.

Convenient Fax Functions

Enjoy a smooth workflow thanks to the convenient fax functions that come with the AR-M350N. The Broadcast Transmission function automatically forwards your document to up to 300 destinations at the same time. The Polling function, meanwhile, enables you to request a remote fax machine to send you a document stored in its memory, and vice versa.

Supports F-Code Standard

Conforming to the ITU-T F-Code standard, the AR-M350N works smoothly with other F-Code-supporting machines, even those made by other manufacturers. Fax machines that support F-Code communication allow you to create up to 100 Memory Boxes and set a sub-address and pass code for each of them. This facilitates a variety of F-Code operations.

- **F-Code Confidential Transmission:** A sub-address and pass code are required to print any fax which is sent with the F-Code formula. Sensitive documents that you wish to send to a specific individual can thus remain confidential.
- **Relay Broadcasting:** The AR-M350N routes your fax via an intermediary machine to as many as 30 end-receiving machines. This can save you time and money when, for example, you want to send a fax to multiple recipients in a foreign country.
- **F-Code Polling:** The F-Code Polling function requires you to send the sub-address and pass code corresponding to a remote machine's Memory Box in order to retrieve a document scanned into that Memory Box. The F-Code Polling Memory function, meanwhile, enables you to save a document into your own machine's Memory Box, so that a remote machine can retrieve it using the F-Code Polling function.

Built-In Flash Memory

The AR-M350N comes equipped with 2MB of Flash Memory. This acts as an automatic back-up, storing the equivalent of up to 100 pages of A4 size (8 1/2" x 11") paper*. Even if there is a sudden power cut, for example, your scanned data is preserved in the memory. The optional Fax Memory allows you to extend the Flash Memory up to 10MB.

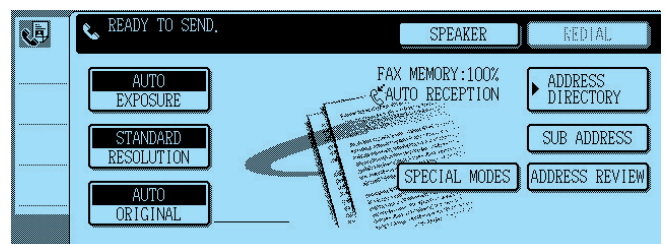
* Based on ITU-T test chart No. 1 at standard resolution.

Outstanding Image Quality

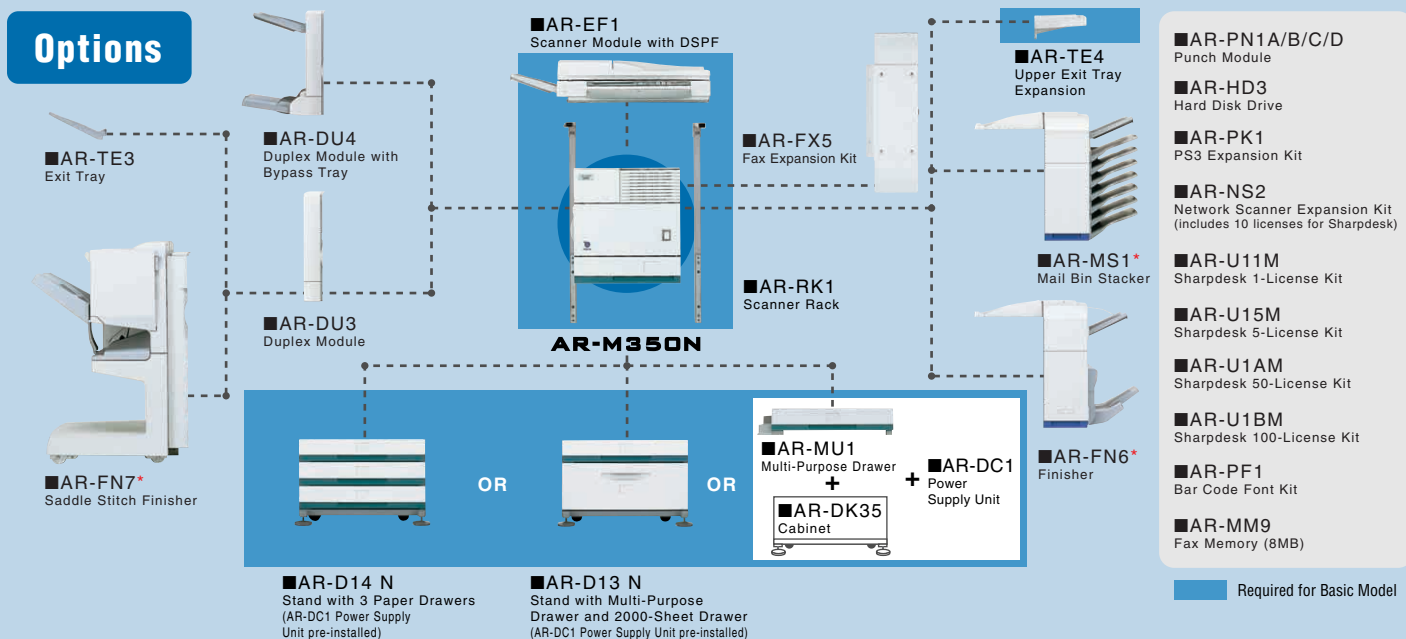
The AR-M350N offers you up to 400 x 400dpi scanning resolution in the Ultra-Fine mode. Add to this its 256 grayscale levels, and you are guaranteed crisp, clear faxes – even of highly detailed pictures.

OTHER FUNCTIONS

- Timer Transmission • Fax Forwarding • Dual Page Scan
- Fax Job Programmes (up to 8) • Key Operator Programme • Animated Guide for easy operation



Options



• The options marked "*" require AR-DC1 when not using AR-D13 N or AR-D14 N. • AR-MU1 requires AR-DK35. • AR-DU3 is required when installing AR-FN7. • AR-TE3 is required when installing AR-DU3 without AR-FN7. • AR-TE4 is required when neither AR-FN6 or AR-MS1 is installed.

Specifications AR-M350N DIGITAL LASER PRINTER

AR-M350N	
GENERAL	
Paper Size	A4, B5 (8 1/2" x 11") Up to A3 (11" x 17") with optional AR-MU1, AR-D13 N or AR-D14 N
Paper Capacity	500 sheets, expandable up to 3,100 sheets with options
Print/Copy Speed*1	Max. 35 ppm/cpm
Memory	64 MB, upgradable to 320 MB, 5 GB hard disk (option)
Warm-Up Time*2	Approx. 80 seconds
First Copy Time*2	5.3 seconds (1st paper tray, Quick Scan mode, 600 x 300 dpi)
Power Requirements	Rated local AC voltage $\pm 10\%$, 50/60 Hz
Power Consumption	Max. 1.44 kW (100 – 127 V), 1.85 kW (200 – 240 V)
Dimensions (W x D x H)*3	826 x 685 x 1,116 mm (32 17/32" x 26 31/32" x 43 15/16")
Weight*3	Approx. 99 kg (218 lbs.)
PRINTER	
Resolution	600 dpi, 1200 dpi equivalent with smoothing technology
Parallel Interface	IEEE 1284 parallel port
Supported OS (Printer Drivers)*4	Windows® 95/98/Me, Windows NT® 4.0, Windows® 2000, Windows® XP, Macintosh® OS 8.5.1 to 9.x
PDL Emulation	PCL®5e, PCL®6, PostScript®3 (option)*5
Resident Fonts	PCL: 45 outline fonts, PS: 136 outline fonts (option)
NETWORK PRINTER	
Hardware Interface	100Base-TX, 10Base-TX
Supported Platforms	UNIX, Windows® 95/98/Me, Windows NT® 4.0, Windows® 2000, Windows® XP, Novell NetWare 3.x/4.x (IntranetWare)/NetWare5, Macintosh® OS 8.5.1 to 9.x
Network Protocols	IPX/SPX for Novell environment, TCP/IP for Windows® and UNIX environment, EtherTalk for Macintosh® environment
Printing Protocols	Novell Printserver Application with NCS and Bindery, Printer resident LPD (includes reaction to LPO request), TCP FTP for downloading print files, EtherTalk Printing, IPP, NetBEUI for Windows®
COPIER	
Originals	Max. A3 (11" x 17"), Min. A5 (5 1/2" x 8 1/2") (sheets, bound documents)
Continuous Copy	Max. 999 copies
Resolution	600 dpi (copying)/300, 600 dpi (scanning)
Zoom Range	25 to 400% with 8 preset ratios (4 reduction + 4 enlargement) 25 to 200% when equipped with DSPF
NETWORK SCANNER (Optional AR-NS2 required)	
Resolution	200, 300, 400, 600 dpi
Compatibility	TWAIN compliant (push out method)
Sharpdesk™ Licenses	10-user licenses included
FAX (Optional AR-FX5 required)	
Transmission Time	Less than 3 seconds*6
Compression Method	MH/MR/MMR/JBIG
Modem Speed	33,600 bps to 2,400 bps with automatic fallback
Communication Formula	Super G3, G3
Number of Supported Lines	1 for PSTN or PBX
Grayscale Levels	256 levels
Resolution Settings	Normal/Small Letter/Fine/Ultra-Fine
Memory	2 MB, upgradable to 10 MB (option)
One-Touch Dial Keys	500 (including e-mail addresses)

OPTIONS

AR-DU3 Duplex Module	
Paper Size for Duplex Copy	Max. A3 (11" x 17"), Min. A5R (5 1/2" x 8 1/2"R)
Tray Capacity (Exit Tray)*7	100 sheets*8
AR-DU4 Duplex Module with Bypass Tray	
Duplex Module	Paper Size Tray Capacity (Exit Tray) Max. A3 (11" x 17"), Min. A5R (5 1/2" x 8 1/2"R) 100 sheets*8
Bypass Tray	Paper Size Paper Capacity Max. A3 (11" x 17"), Min. A5R (5 1/2" x 8 1/2"R) 100 sheets*8
AR-MS1 Mail Bin Stacker	
Number of Trays	8 (Top tray and 7 Mail bins)
Tray Capacity	Top tray: 250 sheets*8 Mail bins: 100 sheets each*8
Paper Size	Top tray: Max. A3 (11" x 17"), Min. A5R (5 1/2" x 8 1/2"R) and envelope*9 Mail bins: Max. A3 (11" x 17"), Min. B5R (Executive)
AR-FN6 Finisher	
Number of Trays	2 (Upper: Normal tray, Lower: Offset tray)
Tray Capacity	Normal tray: 500 sheets*8, Offset tray: 750 sheets*8
Paper Size	Normal tray: Max. A3 (11" x 17"), Min. A5R (5 1/2" x 8 1/2"R) Offset tray: Max. A4 (8 1/2" x 11"), Min. B5 (7 1/4" x 10 1/2")
Paper Size and Capacity for Stapling	A4, B5 (8 1/2" x 11"), up to 30 sheets (80 g/m ²)
Staple Pattern	3 patterns (front, rear or both)
AR-FN7 Saddle Stitch Finisher	
Number of Trays	2 (Upper: Offset tray, Lower: Saddle stitch tray)
Offset Tray Capacity	Max. 1,000 sheets [A4 (8 1/2" x 11") or smaller]
Saddle Stitch Tray Capacity	Max. 100 sheets
Paper Size	Max. A3 (11" x 17"), Min. A5R (5 1/2" x 8 1/2"R)
Paper Size for Stapling	A3 to B5, 8 1/2" x 13" (11" x 17" to 8 1/2" x 11"R)
Stapling Capacity	Max. 50 sheets [A4 (8 1/2" x 11") or smaller]*10
Staple Pattern	3 patterns (front, rear or both)
AR-PN1A/B/C/D Punch Module	
Model*11	AR-PN1A AR-PN1B*12 AR-PN1C AR-PN1D*13
Number of Holes	2 2 or 3 4 4
AR-MU1 Multi-Purpose Drawer	
Paper Size	A3 to A5R, 8 1/2" x 13" (11" x 17" to 5 1/2" x 8 1/2"R) and envelope*9
Paper Capacity	500 sheets*8, 40 envelopes*9
AR-D13 N Stand with Multi-Purpose Drawer and 2000-Sheet Drawer	
Upper Drawer	Same specifications as the AR-MU1
Lower Drawer	Paper Size Paper Capacity A4 (8 1/2" x 11") 2,000 sheets
AR-D14 N Stand with 3 Paper Drawers	
Upper Drawer	Same specifications as the AR-MU1
Middle/Lower Drawer	Paper Size Paper Capacity A3 to B5R, 8 1/2" x 13" (11" x 17" to 7 1/4" x 10 1/2"R) 500 sheets each

*1 A4 (8 1/2" x 11"), Portrait. *2 At rated voltage, 20°C (68°F), 65% RH. *3 Dimensions and weight include scanner rack and stand. *4 For Macintosh® the optional AR-PK1 is required. *5 PostScript®3 is available for Windows® machines only. *6 Based on ITU-T test chart No.1 at standard resolution. Data transmission time only, not including protocol transmission time. *7 Based on AR-TE3. *8 A4 (8 1/2" x 11"), 80 g/m² (20 lbs.). *9 COM-10, Monarch, DL, C5, ISO B5. *10 128 g/m² (34 lbs.) x 2 + 80 g/m² (20 lbs.) x 48. *11 Multiple punch modules cannot be installed together. *12 Two or three holes can be punched depending on the paper size. *13 Intervals between holes are not regular. • Design and specifications are current as of July 2002, but are subject to change without prior notice. • Some brand names and product names are trademarks and registered trademarks, thus are the property of their respective owners. • Some options are not available in some regions.