

Canon



**GRAPHIC ARTS
SYSTEMS**

CLC 1180
CLC 1140



CLC 1180 CLC 1140

GRAPHIC ARTS SYSTEMS

AT CANON, WE'RE COMMITTED
TO THE GRAPHIC ARTS MARKET.

Canon CLC 1180/1140 devices offer
graphic arts professionals what they
need most: brilliant, accurate, and
consistent color output.

Designed for Graphic Arts Professionals

Professionals throughout the graphic arts industry—including advertising, graphic design, publishing, service bureau, and commercial print—are using the CLC 1180 and CLC 1140 systems to grow their businesses and satisfy demanding clients. With state-of-the-art tools for handling ICC profiles, advanced color management, enhanced calibration, and color consistency that closely simulates offset output, the CLC 1180/1140 devices dramatically push the boundaries of digital color printing, satisfying the needs of the most color-critical users.



Good for the Short Run, Especially over the Long Run

The Canon CLC 1180/1140 devices bring new possibilities to the world of digital color printing—raising its image and expanding its reach. For graphic arts professionals, commercial printers, and corporate reprographics, this means unprecedented control of prepress proofing and output quality. For short-run print-on-demand applications, it opens the door to new markets—and brings new opportunities to any production environment.

Digital is More Color-Critical than Ever Before

The growing need for fast turnaround, consistent color, and lower costs makes the CLC 1180/1140 ideal for any number of situations. Advanced engine and powerful controller capabilities are designed to handle color-critical applications, including signage, brochures, proofs, direct mail, and more. When using a ColorPASS server, graphics firms have access to robust color management technology, like Canon's outstanding Graphic Arts Package. In networks with a Kodak® Polychrome Graphics (KPG) Matchprint™ Professional Server, color-critical professionals can generate the highest-end digital output and SWOP® certified proofs.



Vibrant Color

Canon's Finer, Brighter (FB) Toner produces richer, more accurate color reproduction.



Consistent Color

Internal sensors provide real-time calibration for page-to-page color consistency.



Razor Sharp Text and Graphics

Canon's Automatic Image Refinement enhances image resolution to provide finer line detail and text.

CANON TECHNOLOGY IS DESIGNED FOR COLOR-CRITICAL APPLICATIONS.

Consistent, accurate, and reliable, the CLC 1180 device and CLC 1140 device include Canon proprietary technologies to meet the demands of color-critical markets.

Color Automatic Image Refinement with Tag Bit Support

Through Tag Bit Support, the CLC 1180/1140 devices can produce two different screen resolutions on the same page—text and background, offering a great way to impose text over graphics. Partnered with Canon Automatic Image Refinement, image resolution is boosted to the equivalent of 800 x 400 dpi, delivering superior text and fine line detail.

Press-Like Density Curve

By simulating the non-linear curve density of printing presses, the CLC 1180/1140 devices are able to provide a close match to offset output.

Finer, Brighter (FB) Toner

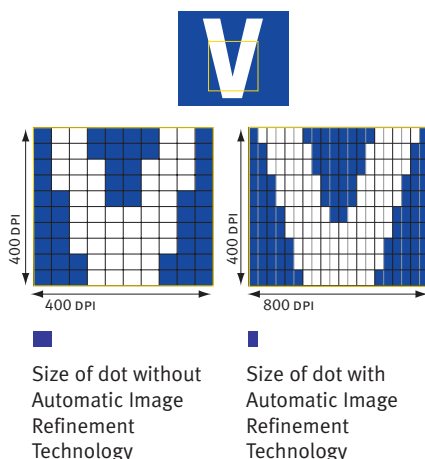
Colors produced on the CLC 1180/1140 devices are rich and vibrant, the result of smaller toner particles of Canon's Finer, Brighter (FB) Toner technology. These smaller particles aid in precision toner placement, resulting in smoother color gradations and sharper images. The Single-step Direct Transfer System transfers toner directly from the photosensitive drum to the paper, which dramatically reduces the effects of environmental conditions on image quality.

Real-Time Calibration

The ability to maintain color consistency throughout the print run is paramount. Real-time Calibration uses sensors to measure gradation levels every few pages, allowing necessary adjustments to be made in "real time" for precise color, page to page and job to job.

We've Got the Art of Hard-Copy Manipulation Down to a Science.

There's always room for improvement. Just ask any client! With the Canon CLC 1180/1140 devices, you can tweak to your heart's content. Special effects and color adjustments are easily accessible using the LCD touch-panel controls. Features include Color Copy Original, One-touch Color, Complexion Adjustment, Hue, and Image Repeat, so you're always in creative control.



Accessorize for Productivity

The Canon CLC 1180/1140 systems can be configured to handle mid-volume copying and printing with a number of productivity-enhancing options.

The 2,500-sheet Paper Deck-E1 instantly boosts the paper capacity of these CLC devices to 3,850 sheets. Plus, users can add the Recirculating Document Feeder-E3, which accommodates up to 100 sheets of letter, letter-R, or statement originals, or 50 sheets of ledger or legal paper (up to 110 lb. Index stock).

The 20-bin Stapler Sorter, with the standard Buffer Pass Unit, provides the CLC 1180/1140 devices with an increased paper capacity, additional sorting capabilities, and three stapling options: Corner, Book, or Single Stapling. Documents are collated and stapled quickly and accurately. And now users can let long jobs run unattended with the 2,500-sheet High-Capacity Stacker TS-100.

With the Editor-F1, the CLC 1180/1140 devices accept document and color adjustments directly, without the need for desktop applications. As a result, users can walk up to the systems and manipulate images, alter colors, and adjust sizes.

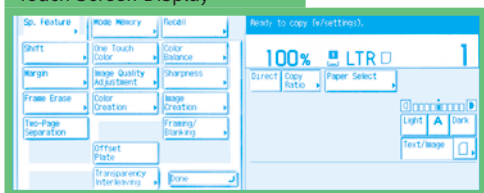
High-Capacity Stacker TS-100



Stapler Sorter-F2



Touch-Screen Display



Recirculating Document Feeder-E3



Editor-F1



Paper Deck-E1



CANON HAS ALL THE RIGHT CONNECTIONS.

Whether taking color output to a new level or adding color capability to a networked printing environment, Canon offers a connectivity option to meet your needs.

Improving Productivity Across Your Workflow

The CLC 1180 and CLC 1140 devices connect seamlessly to **Canon ColorPASS Servers** and the **KPG Matchprint Professional Server** for ultimate color control and processing. With **EFI's MicroPress®** for Canon, the CLC 1100 Series fits into a powerful production management system that enables color and black-and-white cluster printing with one server.

Easy to integrate and simple to use, the Canon ColorPASS-Z800 and ColorPASS-Z500e servers, and KPG's Matchprint Professional Server deliver multiuser access and functionality, and cut prepress time considerably. Now creative, prepress, and pressroom personnel, as well as clients, can be linked with the entire production process of any job, allowing them to submit jobs, monitor progress, proof digital documents, make revisions, and issue approvals, all from their desktop PC.

It's Not Just How Powerful It Is, It's How Powerful It Makes You.

It takes an Intel® Pentium® 4 processor to fuel the Canon ColorPASS-Z800 server. Connected to the CLC 1180/1140 devices, this robust server lets you crunch through the most detailed, full-color jobs and comes loaded with the Canon Graphic Arts Package. Running 2.0GHz of awesome speed, the ColorPASS-Z800 utilizes 256MB of memory (upgradable to 512MB) and a 60GB hard drive. Impressive speed combined with a simplified user-interface make the ColorPASS-Z800 server the right solution for even the most complex color jobs.



If you'd prefer high performance that's more affordable, consider the Canon ColorPASS-Z500e server. Powerful, yet cost-efficient, it stands out as a high-speed, networked production tool that brings greater productivity within reach of more businesses and workgroups than ever before.

Advanced network management and delivery capabilities via Fierey® Scan technology are provided by the latest NetWise™ 3 open architecture. These include Scan-to-Command WorkStation, Scan-to-e-mail, and Fierey Remote Scan via the RDF. Job Submission enables you to store and send files in PDF format to the CLC via e-mail from any location. Command WorkStation® 4 automatically detects all ColorPASS servers on your network, allowing you to manage them all from one window.

ColorPASS-Z800



You'll Wonder How You Ever Managed Color Without It.

The Canon ColorPASS-Z800 server's open architecture clears the way for powerful, networked color management solutions with limitless applications. It employs ColorWise® 3 as an in-RIP color management system, providing a wide array of color-correction and calibration tools for achieving consistent color from all applications, platforms, and file formats. ColorCal®, a scanner-based calibration process, utilizes a two-step method for a higher level of calibration accuracy. Auto Gray adjusts the gray balance between multiple devices for a closer visual match. With Post-RIP Calibration, all calibration properties are applied after rasterization, thereby allowing you to reprint files without re-ripping them.

Color-Critical Jobs Require Color-Critical Features.

When using any ColorPASS server, the potential of Canon innovation is further enhanced with a proprietary Graphic Arts Package. Standard on the ColorPASS-Z800 server, the Canon Graphic Arts package includes a range of capabilities designed specifically for graphic arts professionals*:

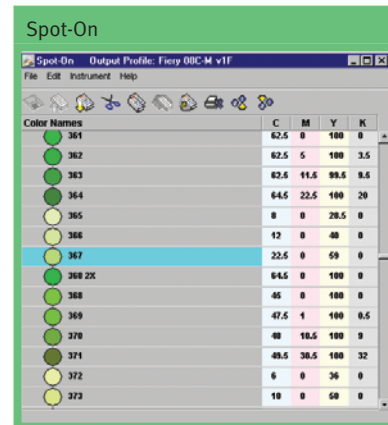
- **Hot Folders**—automates the printing process by utilizing predefined settings
- **Halftone Screening and Paper Simulation**—aids in the proofing process by providing final output characteristics
- **Spot-On®**—edits equivalent values of PANTONE® colors
- **Auto-Trapping**—ensures tight registration
- **Unlimited Separations**—supports any number of plates for process and spot colors
- **TIFF/IT File Support and Soft Proofing**—for more accurate on-screen page previews

Canon Confidence Extends to Proofing and Printing.

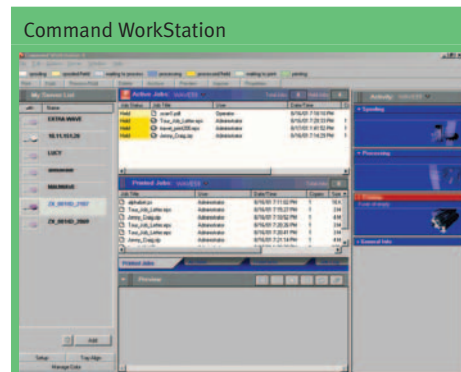
When connected to the KPG Matchprint Professional Server, the CLC 1180/1140 devices produce high-end digital output and intermediate proofs that simulate all the color intricacies of the final printed piece. With the KPG color management module, this server easily replicates flesh tones, foods, spot colors, and gradations with the finest detail. Equally important, it's easy to use. This server quickly outputs standard matchprint color sets and Kodak Approval Digital Halftone Proofing System simulations; it also produces other color-set simulations, including DuPont's Waterproof Proofing System, Fujii's ColorArt Proofing System, and TR001.

Cluster Printing Solution

The EFI MicroPress for Canon offers greater bandwidth to support document production over several output devices. Now the color-critical capability of the CLC 1180/1140 systems can be integrated into a cluster print environment with multiple black-and-white and color devices. Execute job splitting to speed completion while retaining access to a number of advanced job and color management capabilities powered by the MicroPress.



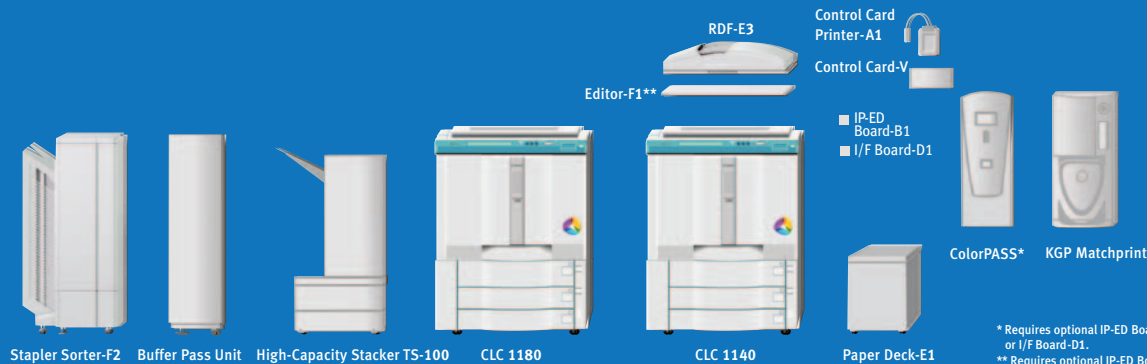
Color Names	C	M	Y	K
361	62.5	0	100	0
362	62.5	5	100	3.5
363	62.5	11.5	99.5	8.5
364	64.5	22.5	100	20
365	0	0	28.5	0
366	12	0	40	0
367	22.5	0	59	0
368 2X	64.5	0	100	0
368	45	0	100	0
369	47.5	1	100	0.5
370	48	18.5	100	0
371	49.5	38.5	100	32
372	6	0	36	0
373	18	0	58	0



KPG Matchprint Professional Server



*For the ColorPASS-Z500e, Auto-trapping and Spot-On capabilities are standard.



CLC 1180 CLC 1140

* Requires optional IP-ED Board-B1 or I/F Board-D1.
** Requires optional IP-ED Board-B1.

CLC 1180/1140 Specifications

Technology:	Color Laser Electrophotographic
Acceptable Originals:	Sheets, Books, Solid Objects up to 4.4 lb. 11" x 17"
Max. Original Size:	11" x 17"
Copy Sizes	
Drawer-Feeding:	Letter (8-1/2" x 11") Legal (8-1/2" x 14") Ledger (11" x 17")
Stack Bypass:	7-3/16" x 7-3/16" to 12" x 18"
Optional Paper Deck:	Letter (8-1/2" x 11")
Magnification	
Standard Mode:	100% (Direct)
Preset Reduction:	25%, 50%, 64%, 73%, 78%
Preset Enlargement:	121%, 129%, 200%, 400%
Zoom Mode:	25%—400% (in 1% increments)
Copy Speeds	
Letter:	11 cpm (Full 4-color), 42 cpm (B/W)
Letter-R, Legal, Ledger:	5.5 cpm (Full 4-color), 21 cpm (B/W)
OHP Transparency:	3.1 cpm (Full 4-color)
First-Copy Time:	18.1 Seconds (Full 4-color) 9.6 Seconds (B/W)
Warm-Up Time:	Approx. 8 Minutes and 30 Seconds or Less (68°F/20°C)
Resolution:	400 x 400 dpi (8-bit), Equivalent Appearance of 800 x 400 dpi (Color Automatic Image Refinement)
Halftone:	256 Gradations
Copy Exposure:	Automatic Exposure, 9/17 Gradations (Switchable)
Paper-Feeding:	Two Front-loading Paper Drawers plus Stack Bypass
Standard:	2 x 550 + 250
Optional Paper Deck:	2,500 Sheets
Acceptable Paper Weights	
Drawer:	17 lb. to 28 lb. Bond
Bypass:	17 lb. Bond to 110 lb. Index*
Maximum Paper Capacity:	3,850 Sheets (with Optional Paper Deck)
Multiple Copies:	1 to 100
Duplexing	
CLC 1180:	Automatic**/Manual
CLC 1140:	Manual
Power Requirements:	115V, 15A, 60Hz
Dimensions (HxWxD):	39-3/8" x 30-1/4" x 30-1/2" (1,000mm x 768mm x 775mm)
Weight	
CLC 1180:	642.6 lb. (291.5kg)
CLC 1140:	600.8 lb. (272.5kg)

Recirculating Document Feeder (RDF)-E3 (Optional)	
Acceptable Original Sizes:	Statement to Ledger
Acceptable Paper Weight	
RDF:	17 lb. to 32 lb. Bond
SSDF:	10 lb. to 110 lb. Index
Original Capacity:	100 Sheets (Letter, Letter-R, Statement) 50 Sheets (Ledger, Legal)
Power Consumption:	120W/60W
Power Requirements:	DC24V Directly from the Copier
Dimensions (HxWxD):	6-7/8" x 25-3/8" x 21-1/4" (174mm x 643mm x 539mm)
Weight:	52.9 lb. (24kg)
Editor-F1 (Optional)	
Maximum Original Size:	11" x 17"
Area Designation:	Up to 200 Areas
Features:	Framing, Blanking, Area Editing
Colors:	Three 64-shade Palettes plus Custom Palette
Dimensions (HxWxD):	2" x 25" x 20" (49mm x 634mm x 507mm)
Weight:	10.8 lb. (4.9kg)
Paper Deck-E1 (Optional)	
Copy Size:	Letter (8-1/2" x 11")
Acceptable Paper Weight:	17 lb. to 28 lb. Bond
Capacity:	Up to 2,500 Sheets (20 lb. Bond)
Dimensions (HxWxD):	17-1/8" x 12-3/4" x 23-1/4" (423mm x 323mm x 591mm)
Weight:	67.4 lb. (30.6kg)
Stapler Sorter-F2 (Optional)	
Number of Bins:	20 + 1 (Non-Sort)
Max. Capacity Per Bin	
Non-Sort Bin:	250 Sheets
Sort Mode	
Letter, Letter-R:	50 Sheets (17 lb. to 28 lb. Bond) 25 Sheets (60 lb. Cover or 90 lb. Index)
11" x 17", Legal:	25 Sheets (17 lb. to 28 lb. Bond) 15 Sheets (60 lb. Cover or 90 lb. Index)
Group Mode	
Letter, Letter-R:	30 Sheets (20 lb. to 28 lb. Bond) 15 Sheets (60 lb. Cover or 90 lb. Index)
11" x 17", Legal:	25 Sheets (20 lb. to 28 lb. Bond) 10 Sheets (60 lb. Cover or 90 lb. Index)

Staple-Sort Mode	
Letter, Letter-R:	30 Sheets (20 lb. to 28 lb. Bond) 20 Sheets (60 lb. Cover or 90 lb. Index)
11" x 17", Legal:	25 Sheets (20 lb. to 28 lb. Bond) 15 Sheets (60 lb. Cover or 90 lb. Index)
Staple Positions:	Corner/Single/Double Staple
Maximum Stapling Capacity:	30 Sheets (Letter)
Staple Cartridge Capacity:	5,000
Power Source:	115V
Power Consumption:	135W
Dimensions (HxWxD):	38-7/8" x 32-5/8" x 24" (999mm x 828mm x 609mm)
Weight:	Approx. 176 lb. (56kg)

Additional Optional Accessories
ColorPASS Server for the CLC 1180/1140
IP-ED Board-B1
I/F Board-D2
Control Card-V
Control Card Printer-A1
High-Capacity Stacker TS-100
KPG Matchprint Server
MicroPRESS Color Connectivity Kit

* See your Authorized Canon Dealer for a list of approved media.

** Automatic Duplexing up to 28 lb. Bond.

† Tag Bit only supported when connected to a ColorPASS-Z500e or ColorPASS-Z800.

‡ Only supported when connected to a ColorPASS-Z800.

Canon
*image*ANYWARE

As an ENERGY STAR® Partner, Canon U.S.A., Inc. has determined that this product meets the ENERGY STAR guidelines for energy efficiency. DuPont is a trademark of E.I. du Pont de Nemours and Company or affiliates. Kodak is a trademark of Eastman Kodak Company. Matchprint is a trademark of Kodak Polychrome Graphics. Intel and Pentium are registered trademarks of Intel Corporation. Fiery, MicroPress, Command WorkStation, ColorWise, ColorCal, and Spot-On are registered trademarks of Electronics for Imaging, Inc. in the U.S. Patent and Trademark Office and/or certain other foreign jurisdictions. NetWise is a trademark of Electronics for Imaging, Inc. PANTONE is a registered trademark of Pantone, Inc. CANON and COLORPASS are registered trademarks, and the GENUINE logo is a trademark of Canon Inc. in the United States and may also be registered trademarks or trademarks in other countries. IMAGEANYWARE is a trademark of Canon. All referenced product names and other marks are trademarks of their respective owners. Specifications subject to change without notice.
©2006 Canon U.S.A., Inc. All rights reserved.

Federal Law prohibits copying of certain documents. Violators may be subject to penalties. We suggest that you check with your own legal counsel. Canon U.S.A., Inc. and Canon Canada, Inc. intend to cooperate with Law Enforcement Agencies in connection with claims of unauthorized copying.

1-800-OK-CANON
www.usa.canon.com

Canon U.S.A., Inc.
One Canon Plaza
Lake Success, NY 11042

0059W494
0206R-1180/1140-14M-P

