

Canon



CORPORATE SOLUTIONS



 **imageRUNNER®**
5050N

meap
POWERED BY

CORPORATE SOLUTIONS

SPEED, POWER, AND RELIABILITY FOR DEMANDING OFFICES

Next-generation imageRUNNER® technology delivers
the tools you need for everyday printing.



Speed, power, and reliability. What more does your busy office need? Canon thinks more—much more. That's why the new imageRUNNER 5050N system has been infused with the latest Canon technology and security advancements to meet today's business demands.

The Canon imageRUNNER 5050N model is built on Canon's next-generation imageCHIP system architecture for true job concurrency and exceptional multifunction performance. This system provides powerful capabilities to boost productivity and streamline workflows while providing peace of mind that your critical information is protected with advanced security and administration features.

Offering standard network printing, a full range of professional finishing options, powerful document creation tools, robust storage and communication features, and cutting-edge print controller options, the versatile imageRUNNER 5050N model delivers everything you need to produce sophisticated documents with ease.

BOUND TO INCREASE PRODUCTIVITY FOR PROFESSIONAL RESULTS

The imageRUNNER 5050N model offers the features you need and the performance you demand to succeed in business.

Robust Engine Design



Duplexing Automatic Document Feeder

- Up to 65-ipm high-speed scanning
- 100-sheet paper capacity

Other Document Handling Options

- Cassette-AB1
- Copy Tray-L1
- Tab Feeding Attachment-B1
- ADF Access Handle-A1

Note: imageRUNNER 5050N shown with optional accessories.

Advanced Finishing Options

- Supports high-volume stacking, versatile 50-sheet stapling, and professional saddle-stitched booklet-finishing capabilities
- Feed preprinted stock into job streams and automate C-/Z-folding tasks
- Ready documents for binding with in-line 2-/3-hole punch capabilities

Superior Paper Handling

- Up to 110 lb. Index media weights, including Tab Paper support
- A choice of two high-capacity paper decks to boost capacity to a maximum of 7,650 sheets



Finisher-AD1



Saddle Finisher-AD2



Document Insertion/
Folding Unit-F1



Document Insertion
Unit-E1



Puncher Unit-AT1



Paper Supply

EXCEPTIONAL PERFORMANCE AND PRODUCTIVITY

Give your department a professional edge.

NEW-GENERATION IMAGE PROCESSING

The imageRUNNER 5050N model is powered by Canon's advanced imageCHIP (Concurrent Hyper Intelligent Platform) system architecture for fast multifunction processing and full concurrency. Its dual CPU design rips through image data at fast speeds for maximum productivity in high-volume environments. Vast memory capacities of 1GB RAM and a 40GB hard disk drive provide the virtual space to support multiple users and workflows in busy departments.

imageCHIP System Architecture



"Set On" Toner Bottle



A-Si Drum



UNMATCHED RELIABILITY

The imageRUNNER 5050N model ensures that every job is completed quickly with output speeds of up to 50 pages per minute (letter). Each model is built on a solid frame to withstand the heavy workload of busy environments. Canon's IH (Induction Heating) Fusing technology helps reduce energy consumption and ensure near-instant system readiness. A high-capacity toner bottle design provides quick and clean replacement. And with a long-lasting Amorphous-Silicon (A-Si) drum, the imageRUNNER 5050N model delivers low operating costs and downtime.

COMPLEX JOBS MADE SIMPLE

The imageRUNNER 5050N system makes the production of complicated documents manageable. Users can combine different sets of documents into one with Job Block Combination at the device. Each set can be configured to run with unique settings, such as paper type, finishing, and more, then reproduced or stored as a new document in a Mail Box. From the desktop, individual pages or groups of pages in documents can be configured with the new Exceptional Settings tab* in the print driver to control output settings, such as media type, paper size, input tray, and finishing options.

* Only available when printing with PostScript 3 emulation.

PROFESSIONAL PRINTING SOLUTIONS

Superior print performance and professional publishing tools

TAKE ADVANTAGE OF STANDARD NETWORK PRINTING

For network printing with impressive results, the Canon imageRUNNER 5050N device includes UFR II and PCL 5e/6 printing as standard. Canon's proprietary UFR II (Ultra Fast Rendering) language is optimized to facilitate high-speed printing in both Windows® and Macintosh® environments by distributing the data processing between the user's desktop computer and the imageRUNNER device.

For those environments requiring PostScript® 3™ emulation printing, the PS Printer Kit-R1 can be added.

imagePASS-S2



ACHIEVE MORE POWERFUL PRINT PERFORMANCE

Choose the external imagePASS-S2 to gain support for genuine Adobe® PostScript 3 along with PCL 5e/6, plus access to advanced options such as Hot Folders and Virtual Printers, Command WorkStation®, and EFI® Impose to manage complex workflows with automated job queuing.

BUILD DOCUMENTS THAT MAKE A LASTING IMPRESSION

Canon's imageWARE Publishing Manager software option provides powerful desktop tools to produce professional documents through a simple drag-and-drop interface. Documents can contain contents from many different sources and applications and provide access to a number of editing, imposition, and finishing capabilities.

All the tools you need for a professional high-volume document production system.

DOCUMENT MAKE-READY TOOLS



Special Copy Features

Job Block Combination:
Combine different settings in one job

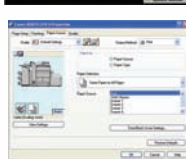


imageWARE Publishing Manager
Build dynamic documents using drag-and-drop functionality



Web Access

Information retrieval from Internet and/or intranet



Print Driver

Page Layout, Finishing, Paper Source, and Quality settings

User Inboxes



JOB SUBMISSION

DOCUMENT STORAGE

Professional-Level Finishing



Saddle-Stitched Booklets



C-Fold



Z-Fold



ADVANCED IN-LINE FINISHING OPTIONS

PRINT

- High Image Quality
- Fast Processing
- High-speed Output

PROFESSIONAL DOCUMENT DISTRIBUTION AND COMMUNICATION

Access, collaborate, and share information from anywhere

COMMUNICATE WITH CONFIDENCE

The Internet-ready imageRUNNER 5050N system can be equipped with a host of features that support information sharing. Start with bundled TWAIN scanning for basic image capture needs with the easy-to-use Canon Network ScanGear utility. Add traditional Super G3 Faxing plus PC Fax capability for convenient faxing from the desktop.

With Canon's Universal Send technology, users can push digital documents to any network destination—e-mail/I-fax addresses, network folders, and local Mail Boxes—all in one simple operation in popular industry formats. These devices also offer productivity-enhancing options, like the Searchable PDF feature, that enables fast keyword searches, information extraction and PDF Encryption, which adds a layer of protection to files as they travel across the network.



Universal Send



Web Access Software

MAXIMIZE THE POWER OF THE WEB

Support for the Web-based Distributed Authoring and Versioning (WebDAV) protocol facilitates employee collaboration over the Internet. Team members can communicate from remote locations by scanning and securely sending documents from an imageRUNNER 5050N system to a shared storage service.*

Access to global information is at your fingertips with the Web Access Software option. Browse the Web or corporate intranet sites directly at the system's full-color touch-panel display, and then view or print Internet pages and PDF files right at the device.**

* Requires Universal Send Kit-H1.

** Printing PDF files with the Web Access feature requires the PS Printer Kit-R1.

POWERFUL DOCUMENT MANAGEMENT

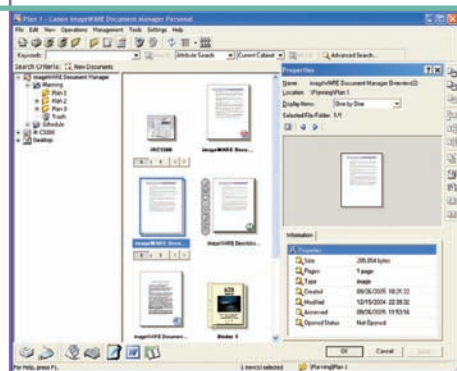
Flexibility to produce and store documents the way you want

ADVANCED WORKGROUP COLLABORATION

The imageRUNNER 5050N model includes internal Mail Boxes for document storage and print-on-demand applications. Documents can be combined and printed as a single job or sent to multiple destinations in a variety of formats. For files that are too large for e-mail or require a large distribution list, the URL Send feature* can e-mail a link to notify recipients that they can remotely preview via PC and, if necessary, print from the device.

DESKTOP INTEGRATION

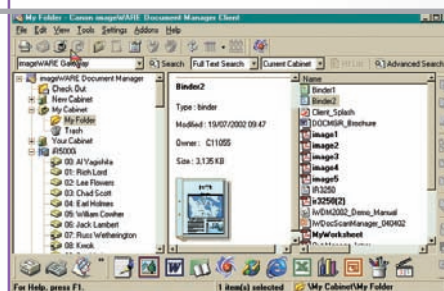
The imageRUNNER 5050N model is designed to work seamlessly with Canon's imageWARE Document Manager Personal Version 4 as a total, end-to-end document solution. You can capture, archive, retrieve, and manipulate documents within the imageRUNNER devices' Mail Boxes right from your desktop computer, seamlessly integrating your workspace with the device.



imageWARE Document Manager Personal Version 4

DOCUMENT ARCHIVAL

Canon offers industry-leading solutions for effective archiving and retrieval of critical business documents and records. Its optional imageWARE Document Manager Workgroup or Enterprise Edition software can efficiently store vast amounts of information in a centralized electronic repository for easy, secure, and effective document management.



imageWARE Document Manager

OPEN PLATFORM INTEGRATION

With Canon's Java-based MEAP architecture, you can design custom interfaces and applications to run on the color of the imageRUNNER 5050N model. MEAP applications can be easily created to support customized workflows for the seamless integration of your business processes.



eCopy ShareScan OP for MEAP

* Requires the Universal Send Kit.

COMPREHENSIVE DEVICE MANAGEMENT

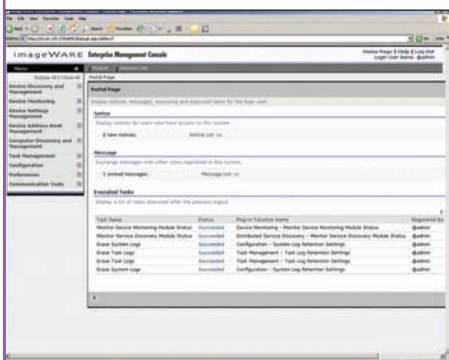
Achieve Complete Control

SIMPLIFY DEVICE DISCOVERY AND MANAGEMENT

Canon's imageWARE Enterprise Management Console (EMC) is a Web-based utility that simplifies and centralizes device installation and management, whether you're supporting a single system or a fleet of networked devices.

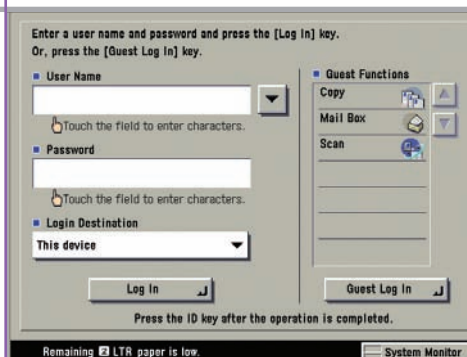
Specify which users have access to the device and its functions by setting restrictions on port usage and acceptable MAC or IP address ranges. Administrators can easily replicate settings and Address Books across multiple devices through the Device Information Delivery Function (DIDF) for consistent operability on all devices on the network.

Authorized users have total visibility to the system through Canon's Remote UI utility. Access device status, job queues, configuration information; monitor paper and supply levels; view documents in Mail Boxes; and edit Address Books via a standard Web browser.



imageWARE Enterprise Management Console

Access Management System Screen



CONTROL ACCESS BY INDIVIDUAL USER

Ensure that only authorized personnel can access the device and the data stored inside it. With a choice of user authentication methods, administrators can track or limit system access to users. Select Single Sign-On (SSO) using network accounts, Simple Device Log-In (SDL), or Department ID. Using the optional Access Management System, administrators have powerful control over access to the device and its functions—at both the user and group levels.

PROTECT CRITICAL INFORMATION

Powerful Security Features

NETWORK SECURITY

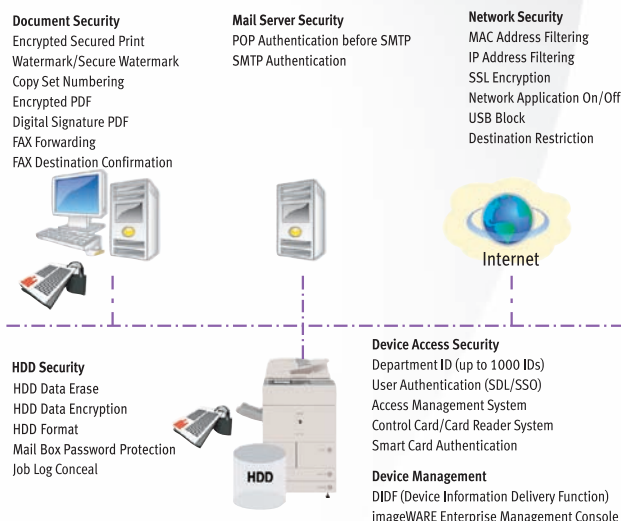
The imageRUNNER 5050N model includes powerful features to help guard against unauthorized access to the device through network ports or IP/MAC address and range restrictions. In addition, the device supports IPv6 for enhanced network infrastructure management.

DATA SECURITY

Protect your imageRUNNER 5050N device with advanced features that guard against unauthorized data access. To protect your stored, scanned, and printed data, the HDD Data Erase Kit automatically overwrites previously stored data. The HDD Data Encryption option provides additional security by encrypting data before it's written to the hard disk drive and has achieved EAL3 Common Criteria (CC) certification.



Digital Signature PDF



Device Management and Security Overview

DOCUMENT SECURITY

Prevent impersonation or interception of information with Digital Device Signature and Digital User Signature options, which verify a document's source and its sender. Documents also can be password-protected with 128-bit AES encryption using the Encrypted PDF option and securely printed over the network through the Encrypted Secured Print option. You can even embed secure watermarks that appear when unauthorized copies are made to help prevent leaks of confidential information.

USER-FRIENDLY

Intuitive Operation Without Complication

SIMPLICITY FOR EVERYONE

The imageRUNNER 5050N model is designed to make you more productive with an easy-to-read, full-color touch-panel, interactive help menus, and more useful documentation and tutorials. Remote tools enable you to monitor and perform operations on the device from any computer on the network.



Control Panel

ACCESSIBILITY OPTIONS

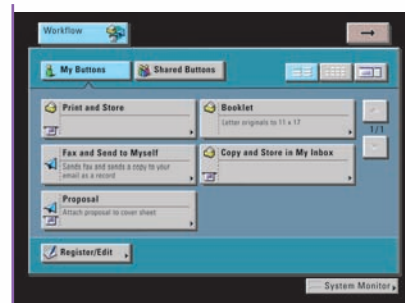
Canon offers a number of options to ensure easy access for every authorized user. Users have access to all system functions from a laptop or desktop PC using the Remote Operator's Software Kit option to emulate the device control panel on a computer monitor. Users with visual impairments can receive audible confirmation of select copy functions with the Voice Guidance Kit.

SUPPORT TOOLS FOR OPERATORS

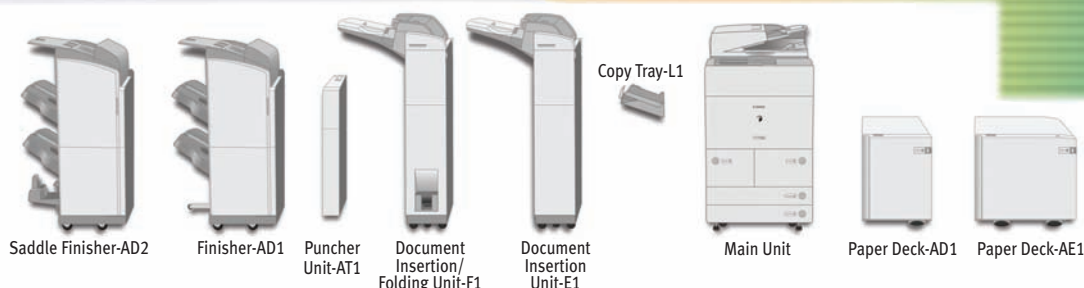
Whether you're a beginner or an advanced user, the imageRUNNER 5050N model is easy to navigate. An easy operation guide provides step-by-step instructions on how to operate the device's main functions. And the [Help] hard key on the device provides instructions and explanations for operation. Instead of bulky manuals, device documentation is CD-based and features search tools to find answers quickly and easily. User tutorials in Macromedia Flash format are also available and can be distributed through your network or corporate intranet for smooth deployment.

ACHIEVE OPERATIONAL EFFICIENCY

Breeze through complex tasks and help to reduce operator mistakes using the new Workflow Composer option. This enables users to configure one-button to perform multiple actions, such as copying, sending, and storing at the device in a single step. For even greater convenience, workflow buttons can also be created and edited from the desktop.



Workflow Composer Menu



MAIN UNIT

| | |
|----------------------------|---|
| Type: | Monochrome Digital Multifunction Imaging System |
| Imaging System: | Laser Dry Electrostatic Transfer |
| Developing System: | Dry Mono Component Toner Projection |
| Fixing System: | Induction Heating Fusing System |
| Acceptable Originals: | Sheets, Books, and 3-Dimensional objects up to 4.4 lb. |
| Max. Original Size: | 11" x 17" |
| Max. Copy Size: | 11" x 17" |
| Min. Copy Size: | 3-7/8" x 5-7/8" (via Stack Bypass) |
| Memory: | Standard 1GB RAM + 40GB HDD (Shared) |
| Max. Copy Reservation: | 20 Jobs |
| Max. Mail Boxes Supported: | 100 User Inboxes, 1 Memory RX Inbox, 50 Confidential Fax Inboxes |
| Scan Resolution: | 600 x 600 dpi |
| Copy Resolution: | 1200 x 600 dpi (Interpolated) |
| Print Resolution: | 2400 x 600 dpi (Interpolated) |
| Halftone: | 256 Gradations of Gray |
| Exposure Control: | Automatic or Manual (9 Levels) |
| Copy/Print Speeds: | Up to 50 ppm (Letter) Up to 31 ppm (11" x 17") Up to 39 ppm (Legal) Up to 43 ppm (Letter-R) |
| First-Copy Time: | 3.3 Seconds from Platen Glass |
| Warm-Up Time: | 30 Seconds or less from Main Power Off or Sleep Mode |
| Multiple Copies: | 1 to 9,999 |
| Document Feeding Method: | 100-Sheet Duplexing Automatic Document Feeder (Standard) |
| Paper Supply | |
| Standard: | Dual Paper Drawers (1,500 Sheets Each) Dual 550-Sheet Paper Cassettes (550 Sheets Each) 50-Sheet Stack Bypass |
| Optional: | 3,500-Sheet Paper Deck |
| Maximum Paper Supply: | 7,650 Sheets |
| Acceptable Paper Sizes | |
| Upper Drawers: | Letter |
| Lower Cassettes: | 11" x 17", Legal, Letter, Letter-R, Statement-R, Executive |
| Stack Bypass: | 11" x 17", Legal, Letter, Letter-R, Statement-R, Executive, Free Size (3-7/8" x 5-7/8" to 11-5/8" x 17") |
| Acceptable Paper Weight: | 17 lb. Bond to 110 lb. Index (From All Sources) |
| Duplexing: | Standard Automatic Trayless Duplexing |
| Magnification | |
| Standard Mode: | 100% |
| Preset Reduction: | 25%, 50%, 64%, 73%, 78% |
| Preset Enlargement: | 121%, 129%, 200%, 400% |
| Zoom Mode: | Platen: 25% - 400% (In 1% Increments) Feeder: 25% - 200% (In 1% Increments) |
| Interface Connections: | 10/100Base-TX (RJ-45), Hi-Speed USB 2.0 |
| Dimensions (H x W x D): | 47-1/2" x 25-3/8" x 29-1/4" (1,207mm x 643mm x 743mm) |
| Weight: | 474 lb. (215kg) |
| Power Requirements: | 120V AC, 60Hz, 20A |
| Power Consumption: | 1.92kW (Max.) |
| Plug: | NEMA 5-20P |
| Toner (Estimated Yield): | 48,000 Impressions @ 6% Image Coverage |
| Drum (Estimated Yield): | 3,000,000 Impressions |

Automatic Document Feeder

| | |
|---------------------------|---|
| Acceptable Originals: | Statement to 11" x 17" |
| Acceptable Weights: | 13 lb. to 32 lb. Bond |
| Paper Capacity: | 100 Sheets (20 lb. Bond) |
| Original Scanning Speed: | Up to 65 ipm (LTR) |
| Print Feature | |
| Type: | Embedded Print Controller |
| CPU: | Canon Dual Custom Processors |
| Memory: | 1GB RAM + 40GB Hard Disk Drive (Standard) (Shared) |
| Interface Connections: | 10/100Base-TX (RJ-45), Hi-Speed USB 2.0 |
| Supported PDL: | Std. UFR II, PCL 5e/6 Opt. PS 3 Emulation |
| Maximum Print Resolution: | 2400 x 600dpi (Interpolated) |
| Supported OS | |
| UFR II: | Windows® 2000/XP/Server 2003/Windows Vista® Citrix MetaFrame Macintosh® OS X (OS 10.2.8 or Later) |
| PCL 5E/6: | Windows 2000/Server 2003/Windows Vista Citrix MetaFrame |
| Optional PDL Support: | PostScript 3 Emulation (PS Printer Kit-R1) |
| Internal Fonts: | PCL: 80 Scalable fonts, 10 Bitmap fonts |

OPTIONAL ACCESSORIES

Paper Deck-AD1

| | |
|--------------------------|------------------------------|
| Acceptable Paper Size: | Letter |
| Paper Capacity: | 3,500 Sheets (20 lb. Bond) |
| Acceptable Paper Weight: | 17 lb. Bond to 110 lb. Index |
| Dimensions (H x W x D): | 22-5/8" x 12-3/4" x 23" |
| Weight: | Approx. 65.7 lb. |

Paper Deck-AE1

| | |
|--------------------------|------------------------------------|
| Acceptable Paper Size: | 11" x 17", Legal, Letter, Letter-R |
| Paper Capacity: | 3,500 Sheets (20 lb. Bond) |
| Acceptable Paper Weight: | 17 lb. Bond to 110 lb. Index |
| Dimensions (H x W x D): | 22-5/8" x 23-1/2" x 24-1/2" |
| Weight: | Approx. 99.4 lb. |

Finisher-AD1/Saddle Finisher-AD2

| | |
|--------------------------|---|
| Number of Trays: | 3 Trays |
| Acceptable Paper Sizes: | 11" x 17", Legal, Letter, Letter-R, Statement, Statement-R, Executive, Free Size (3-7/8" x 5-7/8" to 11-5/8" x 17") |
| Acceptable Paper Weight: | 17 lb. Bond to 140 lb. Index |
| Tray Capacity | |
| Non-Collate Mode | |
| Tray A: | 250 Sheets (Letter, Statement-R, Executive) 125 Sheets (11" x 17", Legal, Letter-R) |
| Tray B: | 1,300 Sheets (Letter, Statement-R, Executive) 650 Sheets (11" x 17", Legal, Letter-R) |
| Tray C: | 2,450 Sheets (Letter) 1,700 Sheets (Statement-R, Executive) 650 Sheets (11" x 17", Legal, Letter-R) |

Collate, Group Modes

| | |
|---------------------------|---|
| Tray B: | 1,300 Sheets (Letter, Executive) 650 Sheets (11" x 17", Legal, Letter-R) |
| Tray C: | 1,700 Sheets (Letter, Executive) 650 Sheets (11" x 17", Legal, Letter-R) |
| Staple Mode (Trays B & C) | |
| Tray B, Tray C: | 1,300 Sheets/100 Sets [or 7-3/8" (188.4mm) in Height] (Letter, Executive) 650 Sheets/50 Sets [or 3-3/4" (96mm) in Height] (11" x 17", Legal, Letter-R) |
| Paper Sizes: | 11" x 17", Legal, Letter, Letter-R, Executive |
| Staple Positions: | Any Corner Staple Double Staple in Right or Left Margin Saddle Stitch (Center Staple)* |
| Stapling Capacity: | 50 Sheets (Letter, Executive) 30 Sheets (11" x 17", Legal, Letter-R) |
| Saddle-Stitching:* | |
| Acceptable Paper Sizes: | 11" x 17", Legal, Letter-R |
| Saddle-Stitch Capacity: | 15 Sheets (60 Page Booklets) |
| Tray Capacity: | 25 Sets (1 to 5 Sheets) 15 Sets (6 to 10 Sheets) 10 Sets (11 to 15 Sheets) |
| Folding: | V-folding |
| Dimensions (H x W x D) | |
| Finisher-AD1: | 44-1/8" x 25-1/2" x 25-7/8" |
| Saddle Finisher-AD1: | 44-1/8" x 25-5/8" x 25-7/8" |
| Weight | |
| Finisher-AD1: | Approx. 106 lb. |
| Saddle Finisher-AD2: | Approx. 155 lb. |
| Attachable Accessories: | Document Insertion Unit-E1 Document Insertion/Folding Unit-F1 Puncher Unit-AT1 |

Document Insertion Unit-E1 (Option for Finisher-AD1/Saddle Finisher-AD2)

| | |
|--------------------------|---|
| Number of Trays: | 1 |
| Insertion Tray Capacity: | 100 Sheets |
| Acceptable Paper Weight: | 17 lb. Bond to 140 lb. Index |
| Acceptable Paper Sizes: | 11" x 17", Legal, Letter, Letter-R, Executive |
| Dimensions (H x W x D): | 48-7/8" x 26-1/8" x 26-3/4" |
| Weight: | Approx. 88.2 lb. |

Document Insertion/Folding Unit-F1 (Option for Finisher-AD1/Saddle Finisher-AD2)

| | |
|--------------------------------------|---|
| Number of Trays: | 1 |
| Insertion Tray Capacity: | 100 Sheets |
| Acceptable Paper Weight (Insertion): | 17 lb. Bond to 140 lb. Index |
| Acceptable Paper Sizes (Insertion): | 11" x 17", Legal, Letter, Letter-R, Executive |
| Acceptable Paper Weight (Folding): | 17 lb. - 28 lb. Bond |
| Acceptable Paper Sizes (C-Fold): | Letter-R |
| Acceptable Paper Sizes (Z-Fold): | 11" x 17", Legal, Letter-R |
| Folding Method: | Roller Pressure Folding |
| C-Fold Output Tray Capacity: | 40 Sheets |
| Dimensions (H x W x D): | 48-7/8" x 26-1/8" x 26-3/4" |
| Weight: | Approx. 168 lb. |

Puncher Unit-AT1

(Option for Finisher-AD1/Saddle Finisher-AD2)

| | |
|--------------------------|--|
| Acceptable Paper Sizes: | 11" x 17", Legal, Letter, Letter-R |
| Acceptable Paper Weight: | 17 lb. Bond to 110 lb. Index |
| Punch Method: | Sequential Processing System (One Sheet at a time) |

Punch Type: 2 Holes: (Legal, Letter-R)
3 Holes: (11" x 17", Letter)
Punch Waste Capacity: Approx. 3,000 Sheets
Dimensions (H x W x D): 32-3/4" x 4-1/4" x 24-1/4"
Weight: Approx. 15.9 lb.

PS Printer Kit-R1

PDL: PS 3 Emulation
Supported OS: Windows 2000/XP/Server
2003/Windows Vista
Citrix MetaFrame Macintosh OS X
(OS 10.2.8 or Later)
Internal Fonts: 10 Bitmap fonts; PS: 136 Scalable
fonts

imagePASS-S2

Type: External Print Controller
CPU: Intel® Celeron® D @ 2.8GHz
Operating System: System 8e
Memory: 256MB RAM (Standard)
512MB RAM (Maximum)
Hard Disk Drive: 80GB (Standard)
Interface Connections: 10/100/1000Base-TX (RJ-45)
Supported PDLs: Adobe PostScript® 3™, PCL 5e/6
Resolution: 2400 x 600 dpi (Interpolated)
Supported OS: Windows 98/Me/2000/XP
Server 2003/Windows Vista
Citrix MetaFrame
Macintosh OS X (OS 10.2 or Later)
Internal Fonts: 136 Adobe Type 1 Roman PS fonts
EFI Options: Hot Folders and Virtual Printers,
Impose v2.6, 256 RAM

Universal Send Kit-H1

Address Book Capacity: Max. 1,800 Destinations
Max. 5 LDAP Servers
Sending Methods: E-mail, I-Fax, File Server (FTP, SMB,
IPX, WebDAV), User Inbox,
Super G3 (Optional)
Scan Resolutions: 100 x 100 dpi to 600 x 600 dpi,
User Selectable
Communication Protocol
File: FTP (TCP/IP), SMB (TCP/IP),
NCP (IPX), WebDAV
E-mail/I-Fax: SMTP, POP3, I-Fax (Simple, Full)
Data Format
File/E-mail: TIFF, PDF, PDF (OCR),** Encrypted
PDF,[†] Digital Device Signature PDF,[†]
Digital User Signature PDF^{††}
I-Fax: TIFF (MH, MR, MMR)

Super G3 Fax Board-Z3

Applicable Line: Public Switched Telephone
Network (PSTN)
Connection Lines: 1
Sending/Original Size: Statement to 11" x 17"
Receiving/Printing Size: Statement to 11" x 17"
Transmission Times
ECM-MMR: Approx. 3.2 Seconds/Page
G3MR/G3MH: Approx. 13 Seconds/Page
JBIG: Approx. 2.6 Seconds/Page
Auto Dial Function: Address Book: 1,800 Destinations

OTHER OPTIONAL ACCESSORIES

- Encrypted Secured Print Software-C1
- Barcode Printing Kit-A1^{†††}
- Web Access Software-F1[▲]
- Digital User Signature PDF Kit-A1^{▲▲}
- Universal Send Searchable PDF Kit-A1^{▲▲}
- Universal Send PDF Security Feature Set-A1^{▲▲}
- Workflow Composer-B2
- Secure Watermark-A1
- HDD Data Encryption Kit-B2
- HDD Data Erase Kit-A1
- Access Management System Kit-A1
- Expansion Bus Board-D2
- Wireless Network Interface Adapter NB-W1^{▲▲▲}
- Remote Operator's Software Kit-A2
- Voice Guidance Kit-B1^{▲▲▲}
- Cassette-AB1 (Replacement)
- Tab Feeding Attachment-B1
- Copy Tray-L1
- Card Reader-C1
- Card Reader Attachment-C2
- Braille Label Kit-A1
- ADF Access Handle-A1
- Stamp Unit Cartridge-C1
- Staple Cartridge-J1
- Staple Cartridge-D2
- eCopy Suite
- imageWARE Suite

Footnotes:

* Available with Saddle Finisher-AD2 only.

** Requires Universal Send Searchable PDF Kit-A1.

[†] Requires Universal Send PDF Security Feature Set-A1.

^{††} Requires Digital User Signature PDF Kit-A1.

[▲] Requires PS Printer Kit-R1 for printing PDF files.

^{▲▲} Requires Universal Send Kit-H1.

^{▲▲▲} Requires Expansion Bus Board-D2.

Canon
*image*ANYWARE

As an ENERGY STAR® Partner, Canon U.S.A., Inc. has determined that this product meets the ENERGY STAR guidelines for energy efficiency. ENERGY STAR and the ENERGY STAR mark are registered U.S. marks. Windows and Windows Vista are registered trademarks of Microsoft Corporation in the United States and/or other countries. Adobe and PostScript are registered trademarks of Adobe Systems Incorporated in the United States and/or other countries. Macintosh is a registered trademark of Apple Inc. Intel and Celeron are registered trademarks of Intel Corporation. eCopy is a trademark of eCopy, Inc. CANON, IMAGERUNNER, MEAP, and the GENUINE logo are registered trademarks of Canon Inc. in the United States and may also be registered trademarks or trademarks in other countries. IMAGEWARE is a registered trademark of Canon U.S.A., Inc. in the United States and is a trademark of Canon Inc. in certain other countries. IMAGEANYWARE is a trademark of Canon. All other referenced product names and marks are trademarks of their respective owners and are hereby acknowledged. Product shown with optional accessories and equipment. Specifications and availability subject to change without notice. ©2010 Canon U.S.A., Inc. All rights reserved.

1-800-OK-CANON
www.usa.canon.com

Canon U.S.A., Inc.
One Canon Plaza
Lake Success, NY 11042

