

Canon

 Color
imageRUNNER
C3220 / C2620



CORPORATE
SYSTEMS



meap
POWERED BY

A NEW ERA IN OFFICE PRODUCTIVITY AND COMMUNICATIONS HAS ARRIVED.

The Canon Color imageRUNNER® C3220 and the Color imageRUNNER® C2620 devices are here. Powerful, color multifunction office solutions with the unique ability to adapt to your specific business applications.

Color has long been known to add value to all forms of communications that stimulate your business' success—from engaging and holding your clients' attention, to delivering professional-looking and persuasive messages. You need a solution that can bring high-quality, high-speed color to your enterprise, while streamlining costs and improving overall efficiency.

This is the inspiration for the Color imageRUNNER C3220 and Color imageRUNNER C2620 models. Incorporating Canon's MEAP® (Multifunctional Embedded Application Platform) development architecture, the Color imageRUNNER C3220/C2620 devices offer the unique ability to embed diverse and customizable applications that integrate into every aspect of your business workflow, along with a complete suite of color multifunctional capabilities.

The Canon Color imageRUNNER C3220/C2620 put the brilliance of color document creation, distribution, and management where it belongs—in your hands.



REVOLUTIONIZING THE WAY YOU WORK.

The Canon Color imageRUNNER C3220/C2620 devices deliver excellence in every facet of your communications.



User-Friendly Control Panel

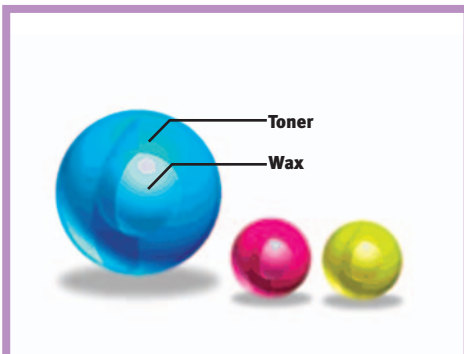
The Color imageRUNNER C3220/C2620 models are designed to seamlessly integrate into your existing environment as a dynamic central hub for total office automation and management of your most valuable resources—critical business information, ideas, and knowledge. In one space-saving device, the system can support advanced digital copying and Mail Box features, network printing and scanning functions, plus the ability to easily distribute information across a diverse digital landscape.

Capturing every detail of your originals with precision, the Color imageRUNNER C3220/C2620 devices can scan color pages at true 600 x 600 dpi resolution. Four-drum, single-pass engine technology drives output at speeds of up to 32 and 26 pages per minute (letter), respectively, for both color and black-and-white documents. Rapid “stackless” duplexing adds to overall productivity, while reducing paper costs.

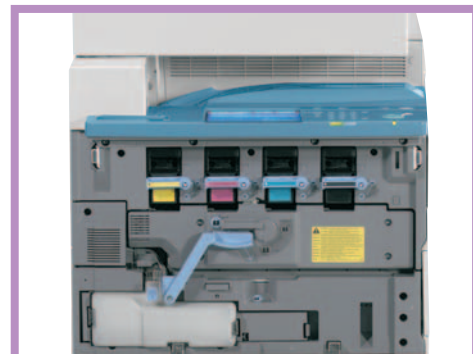
At last, you can deliver accurate, consistent color when you want, throughout your entire enterprise. Canon’s oil-free S-Toners, complete with an extended color gamut, produce eye-catching color with just a touch of gloss. Superior printing resolution is achieved, reaching up to 2400-dpi equivalent x 600 dpi with 256-color gradation.

Extensive document handling options, finishing capabilities, and support for a variety of media allow you to create exciting, attention-grabbing documents in-house, at reduced costs.

Best of all, users and administrators are provided the necessary tools for quick, intuitive operation of all features, whether it be at the device, through a large, full-color touch-screen interface panel, or a desktop through device drivers and utilities supplied by Canon.



Canon’s S-Toner consists of a wax inner layer and polymer outer layer. The result is smooth images that replicate reality.



The space-saving design of the four-drum, single-pass engine contributes to a compact footprint and easy maintenance.

ADVANCED TECHNOLOGY FOR YOUR HIGH-VALUE COLOR DOCUMENT NEEDS.

The Color imageRUNNER C3220/C2620 devices have been engineered to deliver exceptional printing performance and flexibility for any environment.

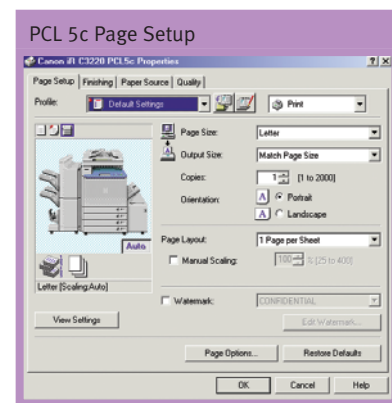
Color Solutions for Every Business Need

The Color imageRUNNER C3220/C2620 devices offer a choice of print controller options ideally suited for environments that need to incorporate color into everyday work.

The Canon Color Network Multi-PDL Printer Kit-A2 delivers color printing capabilities best-suited for general office use, with support for PCL 5c and PostScript® 3™ emulation, and Canon's proprietary Ultra Fast Rendering* (UFR) technology for high-speed performance. Organizations with higher bandwidth requirements may choose the imagePASS-C2** controller, which features its own hardware dedicated to printing applications. This option provides support for genuine Adobe® PostScript 3 and PCL 5c, as well as the value-added capabilities of EFI's Command WorkStation™ utilities.

A New Echelon in Color imageRUNNER Connectivity

When configured with the optional ColorPASS-Z3000**▲ controller, the Color imageRUNNER C3220 can support even the most demanding graphic-intensive applications. Seamlessly integrating high-speed processing power with advanced color management tools, now you can realize high-speed printing with lower running costs for all types of in-house document production in your organization.



* Available for Windows 98/2000/XP/Me operating systems.

** Check with your Authorized Canon Dealer for availability.

▲ Color imageRUNNER C2620 does not support the ColorPASS-Z3000.

UNLOCK THE UNLIMITED COLOR APPLICATIONS IN YOUR ORGANIZATION AND EXPERIENCE THE ADVANTAGES.

The Color imageRUNNER C3220/C2620 devices bring fresh color and a professional finish to your work. They open up an exciting range of new opportunities so you can execute more sophisticated projects with ease.

How Can I Make My Business Stand Out?

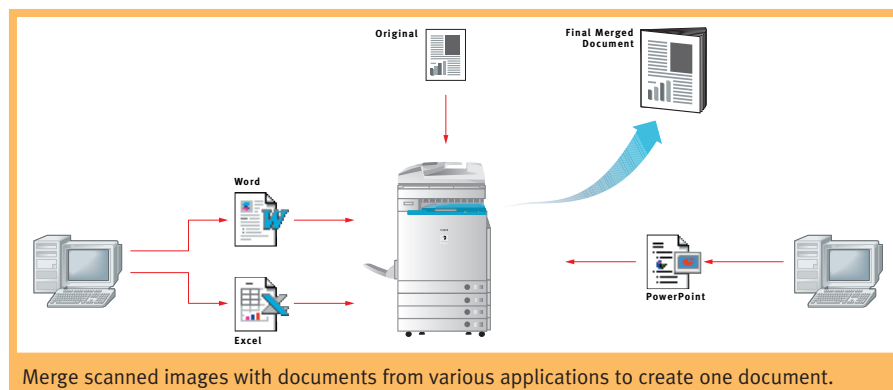
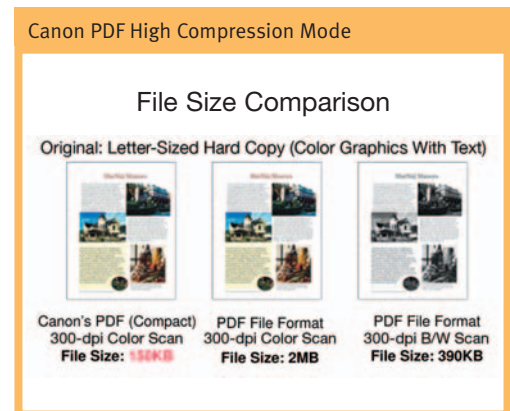
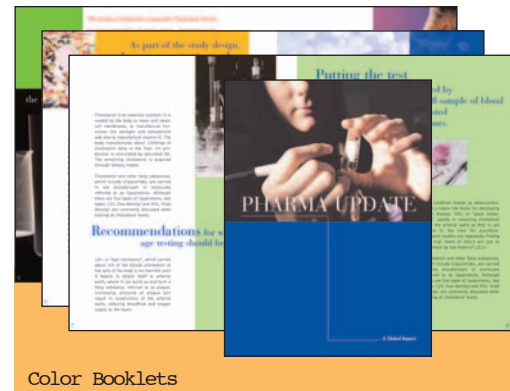
Everyone knows high-quality, professional-looking documents give you added influence. Important documents that you'd normally outsource can now be produced in-house. This saves you time and money, while also increasing your flexibility when it comes to those critical, last-minute updates or changes.

Will I Be Able To Distribute Color Data Quickly and Efficiently?

Color image data can consume huge amounts of memory, resulting in network bottlenecks. That's why Canon incorporated a special color file compression feature for the Color imageRUNNER C3220/C2620 devices, allowing you to distribute color data enterprise-wide and worldwide, without overburdening your network. The end result is a general office environment where working with color documents becomes the norm.

How Can I Integrate Hard-Copy and Electronic Information?

The Color imageRUNNER C3220/C2620 systems can skillfully handle both business media. Existing hard copies can be scanned for copying or distribution and easily merged with electronic documents. And both color and black-and-white output are delivered at fast speeds of up to 32/26 pages per minute, respectively, to help keep pace with your business.



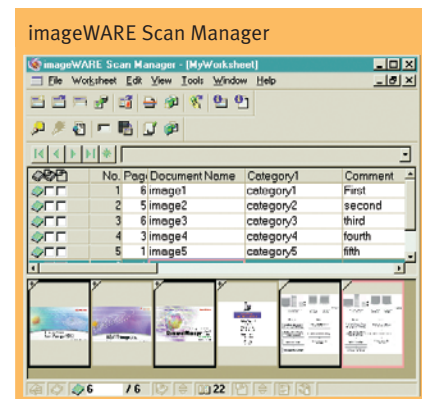
A SMARTER WAY TO WORK IS AVAILABLE IN COLOR.



Integrate the Color imageRUNNER C3220/C2620 devices with Canon's imageWARE™ Office Suite[▲] for a comprehensive color information system to capture, manage, distribute, and publish your data.

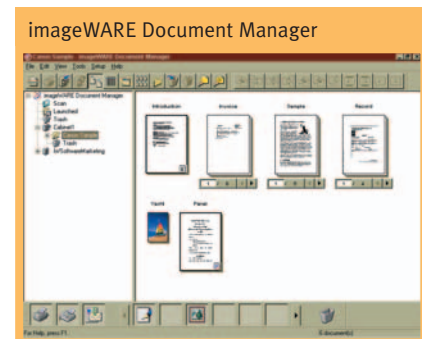
Reduce Labor-Intensive Scanning Costs

Link the powerful scanning capabilities of the Canon Color imageRUNNER C3220/C2620 devices and the scanning and automatic indexing capabilities of Canon's optional imageWARE Scan Manager to capture and convert high volumes of documents into digital data, quickly and easily. Advanced image capture and data recognition help improve the accuracy and usefulness of digitized, computer-based information. As a result, manual labor costs related to scanning and document indexing can be greatly reduced.



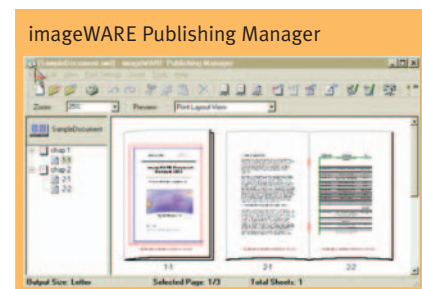
Organize All Your Important Information

Integrate Canon's optional imageWARE Document Manager software with the Color imageRUNNER C3220 and Color imageRUNNER C2620 devices to create a central information database repository in your workgroup or entire enterprise. The software has a client-server architecture that can grow with your business. And it's designed to reduce or replace traditional hard-copy document storage methods in general office environments, supporting applications for retrieval, archival, and records management.



Document Creation Made Simple

Combine the Color imageRUNNER C3220/C2620 devices with Canon's optional imageWARE Publishing Manager for a fast, affordable in-house color publishing system. Now you can create professional-quality booklets, catalogs, brochures, and more with sophisticated finishing features in-house, right from your desktop.



[▲] All imageWARE applications are optional and sold separately. For more information, please check with your local Authorized Canon Dealer.

YOUR BUSINESS IS UNIQUE. YOUR OFFICE EQUIPMENT SHOULD BE, TOO.

Canon introduces MEAP—an embedded platform for building smart, integrated, and customized solutions.

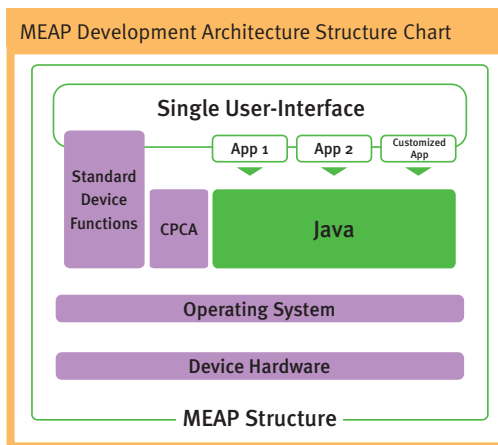
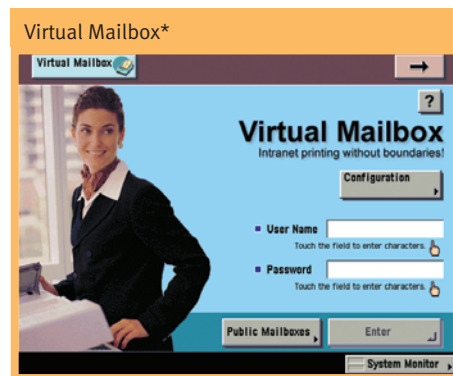
Tailor Your System to Work the Way You Want

Canon is set to transform the way you work. For the first time ever, your business needs come before anything else. Through consultation, a personalized platform can be developed to fulfill your precise applications, providing unparalleled workflow benefits that are both affordable and highly effective.

Java-Based Open Platform Offering Unlimited Uses

Canon's MEAP (Multifunctional Embedded Application Platform) architecture is based on familiar Java standards and presents highly flexible possibilities. With Canon's MEAP technology running inside a Color imageRUNNER C3220/C2620 device, additional applications can be easily installed and integrated, making it possible to control and manage any aspect of document workflow. The result is ultimate and total integration of your business needs.

Take full advantage of an open, customizable architecture for the best fit in your enterprise at every level. To learn more about Canon's development platform, contact your local Authorized Canon Dealer or visit Canon's Web site at www.usa.canon.com.



*Check with your local Authorized Canon Dealer for availability.

A SYSTEM THAT CAN INTEGRATE THE BEST IS THE BETTER CHOICE.



Canon's networked office devices are designed to take full advantage of compelling software and enabling technologies in order to meet specific customer needs.

Solutions developed by Canon's own in-house expertise and from noted third-party alliance partners fall into the following categories:

Document Output Management and Accounting: Solutions that monitor, track, and manage the delivery of documents such as print management and job accounting applications.

Enterprise Printing and Network Device Management: Solutions that enable IT administrators to monitor and control devices within a networked environment.

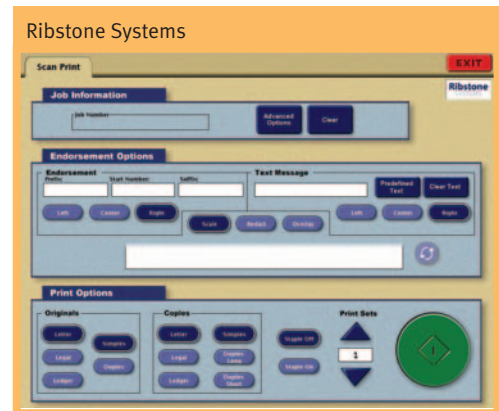
Document Distribution and Management: Solutions, such as eCopy ShareScan™ Open Platform (OP), that assist in enterprise-wide document distribution/management and integration with popular workflow applications.



Section 508 Solutions: Solutions that have been designed to make electronic and information technology products accessible to people with disabilities.

Security: Solutions that provide comprehensive security capabilities for imageRUNNER devices, including network and print security and data overwrite protection.

Industry-Specific Solutions: Canon's solutions that are geared to meet the unique needs and workflow requirements of customers within a particular vertical market.



To learn more about these and additional solutions, contact your Authorized Canon Dealer or visit Canon's Web site at www.usa.canon.com.

COMMUNICATE IN COLOR, QUICKLY AND BRILLIANTLY.

Instantly distribute all your critical business information in color and increase your competitive advantage.

Document Distribution with Color Universal Send™

With their optional Color Universal Send technology, the Canon Color imageRUNNER C3220/C2620 devices allow workgroup users to distribute information to multiple destinations, including individual or groups of e-mail and Internet fax (I-fax) addresses, an internal Mail Box, network or host folders and files, and document management applications such as Canon's optional imageWARE™ Document Manager. Canon's unique color file compression mode is available so heavy file sizes won't congest your network. This eliminates the expense and administrative burdens associated with printing, filing, and forwarding documents through conventional methods.

Optional Super G3⁺ Fax capabilities allow you to transform the device into a powerful fax machine. With advanced job forwarding features, incoming data can be routed to other destinations, ensuring that you are never out of reach from important information.

Protect Your Documents with PDF Encryption

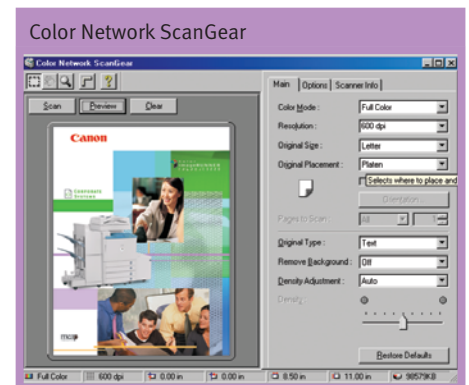
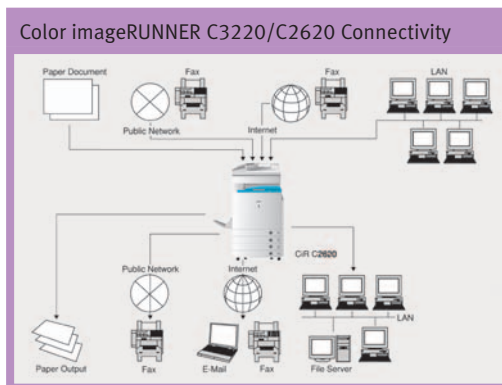
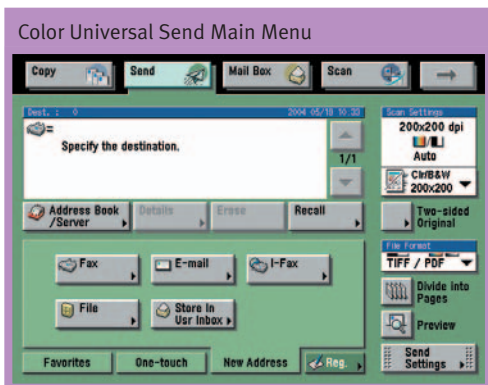
Canon's new Universal Send PDF Encryption Kit-A1 enables you to set a password to a PDF file as well as limit file edit, open, or print when received by a user for enhanced security.

Color Network Scanning is a Snap

Canon's Color Network ScanGear^{††} is a user-friendly, TWAIN-compliant scanning utility that can be used with any 32-bit TWAIN-compliant software application to pull scanned images from the device over a network to a destination PC. Scanned images can then be manipulated at the user's workstation and incorporated into other documents as needed.

[†] Approximate 3-second-per-page fax transmission time based on ITU-T No. 1 Chart (JBIG, Standard Mode) at 33.6 Kbps modem speed when transmitting to another V-34 machine. The Public Switched Telephone Network (PSTN) currently supports 28.8 Kbps modem speeds or lower, depending on telephone line conditions.

^{††} Ships standard with all Color imageRUNNER C3220/C2620 print controller options.



WORKFLOW MANAGEMENT MADE EASY.

The Color imageRUNNER C3220/C2620 devices offer a comprehensive set of features that help facilitate efficient document workflow and device management across your entire enterprise.

Hard-Copy Reproduction and Storage

Canon has equipped these Color imageRUNNER models with a number of digitally enabled color copying and Mail Box functions that enhance workflow. Now you can take advantage of the system's color document manipulation features for accurate reproduction or modification of hard-copy images.

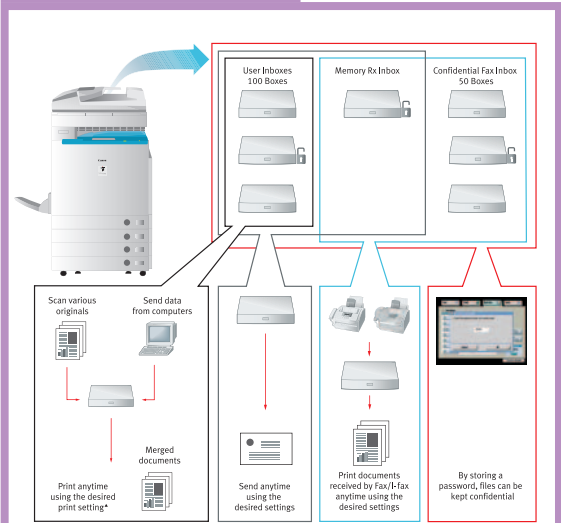
Control and Manage Resources Anywhere

The Color imageRUNNER C3220/C2620 devices, like all Canon networked systems, offer all the tools that aid administrators with installing, accessing, managing, and protecting vast fleets of network-connected devices.

Authentication features such as Department ID Mode provide the ability to track or limit access to the device to those users assigned valid IDs and passwords. What's more, Simple Device Login (SDL) and Single Sign-on (SSO) features allow users to enter personal IDs and passwords to gain system access.

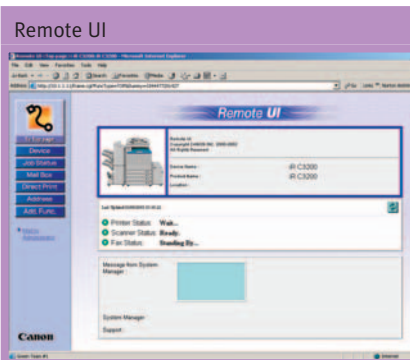
Canon device management utilities, some of which are offered as part of the standard feature or available as optional upgrades, are embodied with the Canon NetSpot® Suite, Remote UI™ utility, Key Switch Unit-A2, and the Canon Print Server Appliance (PSA).

Mail Box Functionality



*Some functions are not available when printing documents that are sent from a computer.

The Color imageRUNNER C3220/C2620 support value-added Mail Box functions that may serve as your centralized system for information-sharing, on-site document storage, and print-on-demand applications.



ADVANCED DOCUMENT HANDLING AND FINISHING SUPPORT.

The Color imageRUNNER C3220/C2620 devices have the flexibility to meet—and exceed—your toughest demands.



Automate Your Business

The Color imageRUNNER C3220/C2620 devices can reduce paper-handling chores and increase productivity in every aspect of your work. An optional Duplexing Automatic Document Feeder (DADF-K1) makes quick work of feeding multipaged one- or two-sided originals so you're free to do other important tasks.

For uninterrupted operation in high-volume environments, these systems can accommodate up to 5,000 sheets of online paper capacity with support for large paper sizes, heavy paper weights, and a wide variety of specialty stocks.

There's a choice of three output options to fit every need and budget so you can produce your key documents in color—and in-house—at reduced costs. From simple collating and stapling to advanced saddle-stitched booklets, the Color imageRUNNER C3220/C2620 systems automate every step of the document-finishing process.

Image of a Leader

As the leading producer of network-connected multifunction devices in the industry, Canon continues to set new standards for quality, performance, and reliability. That's why you can trust Canon to provide you with solutions to make your department more productive and any business more competitive.

Duplexing Automatic Document Feeder (DADF-K1)



Paper Sources



Finisher-M1

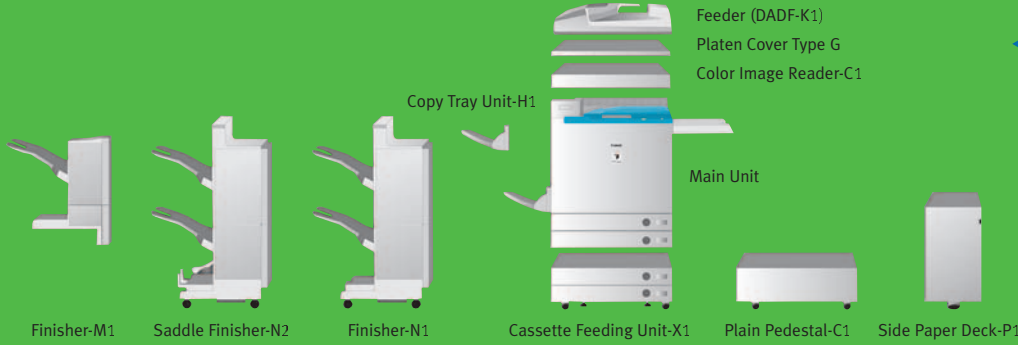


Finisher-N1



Saddle Finisher-N2





Color imageRUNNER C3220/C2620 Specifications

Technology:	Laser Electrostatic Transfer System
Developing System:	Dry Dual Component Developing System
Acceptable Originals:	Sheets, Books, 3-Dimensional Objects (Up to 4.4 lb./2kg)
Max. Original Size:	11" x 17" (Ledger)
Copy/Print Sizes:	
Cassette-Feeding:	Executive, Statement-R, Letter-R, Letter, Legal, 11" x 17", 12" x 18" Letter
Optional Paper Deck:	3-5/16" x 5-7/8" to 12-5/8" x 18" (100mm x 148mm to 320mm x 457mm)
Stack Bypass:	
Magnification:	
Standard Mode:	100%
Preset Reduction:	25%, 50%, 64%, 73%, 78%
Preset Enlargement:	121%, 129%, 200%, 400%
Zoom Mode:	25% - 400% (in 1% Increments)
Copy/Print Speeds (Letter):	
C3220:	Up to 32 ppm (Color and B/W)
C2620:	Up to 26 ppm (Color and B/W)
First-Copy Time:	13.1 Seconds (Color) 9.8 Seconds (B/W)
Warm-Up Time:	6 Minutes Max. After Powering On (68°F/20°C) 6 Minutes From Sleep Mode (Approx.) 30 Seconds From Low-Power Mode 1GB RAM + 40GB HDD
Image Server Memory:	
Resolution:	
Scanning:	600 x 600 dpi
Printing:	Up to 2400-dpi Equivalent x 600 dpi
Halftone:	256 Gradations
Copy Exposure:	Automatic or Manual (9 Levels)
Paper-Feeding:	
Standard:	Dual 550-Sheet Paper Cassettes (1,100 Sheets; 20 lb. Bond/80gsm) Stack Bypass (100 Sheets; 20 lb. Bond) Dual 550-Sheet Paper Cassettes (1,100 Sheets; 20 lb. Bond) Paper Deck (2,700 Sheets; 20 lb. Bond)
Optional:	
Acceptable Paper Weights:	
Cassettes:	17 lb. Bond to 110 lb. Index (64gsm - 209gsm) and Transparency
Stack Bypass:	17 lb. Bond to 140 lb. Index (64gsm - 253gsm) and Transparency
Duplexing:	Standard Automatic Trayless Duplexing
Max. Mail Boxes Supported:	100
Max. Copy Reservation:	5
Multiple Copies:	1 to 999
Network Interface:	10/100Base-T (RJ-45)
Optional Send Functions:	
Sending Methods:	E-Mail, I-Fax, Super G3 Fax, File Server (IPX, FTP, SMB), Mail Box
Address Book Capacity:	1,800
File Format:	B/W: TIFF, MTIFF, PDF Color: JPEG, PDF, PDF (Compact) Statement to 11" x 17" 120V AC, 60Hz, 15A
Sending Sizes:	
Power Source:	
Dimensions (H x W x D) (Printer and Reader):	31-1/2" x 24-3/8" x 31" (799mm x 620mm x 786mm)
Weight (Printer and Reader):	Approx. 277 lb. (126kg)

Accessories	
Duplexing Automatic Document Feeder-K1*	
Acceptable Originals:	Statement to 11" x 17"
Acceptable Paper Weights:	14 lb. to 28 lb. Bond (52gsm to 105gsm) Statement, Letter-R, Letter (30 Sheets/20 lb. Bond), Legal, 11" x 17" (15 Sheets/20 lb. Bond)
Tray Capacity:	
Cassette Feeding Unit-X1 (Optional)	
Paper Capacity:	Dual 550-Sheet Paper Cassettes (1,100 Sheets/20 lb. Bond)
Acceptable Paper Sizes:	Executive, Statement-R, Letter-R, Letter, Legal, 11" x 17", 12" x 18"
Acceptable Paper Weights:	17 lb. Bond to 110 lb. Index
Side Paper Deck-P1 (Optional)	
Paper Deck Capacity:	2,700 Sheets (20 lb. Bond)
Paper Size:	Letter
Acceptable Paper Weights:	17 lb. Bond to 110 lb. Index
Finisher-M1 (Optional)**	
Number of Trays:	1 Tray
Tray Capacity:	No Collating, Collate, and Group Mode:
	1,000 Sheets (Statement-R, Letter-R, Letter) (500 Sheets/30 Sets (Legal, 11" x 17", 12" x 18") 30 Sets (Letter-R, Letter, Legal, 11" x 17") 20 Sheets (Legal) 15 Sheets (11" x 17")
Staple Mode (Corner):	
Max. Stapling Capacity:	30 Sheets (Letter-R, Letter) 20 Sheets (Legal) 15 Sheets (11" x 17")
Acceptable Paper Weights:	17 lb. Bond to 140 lb. Index
Finisher-N1** and Saddle Finisher-N2** (Optional)	
Number of Trays:	2 Trays
Tray Capacity:	No Collating, Collate, and Group Mode:
	1,000 Sheets (Statement-R, Letter) 500 Sheets (Letter-R, Legal, 11" x 17", 12" x 18") 300 Sheets (Mixed Sizes) 750 Sheets/30 Sets (Letter) 500 Sheets/30 Sets (Letter-R, Legal, 11" x 17") 150 Sheets/30 Sets (Mixed Sizes) 50 Sheets (Letter) 30 Sheets (Letter-R, Legal, 11" x 17"; 17 lb. to 20 lb. Bond) 17 lb. Bond to 140 lb. Index
Staple Mode:	
Max. Stapling Capacity:	Letter-R, Letter, Legal, 11" x 17" Letter, 11" x 17"
Acceptable Paper Weights:	
Available Staple Size:	
Corner Stapling:	Letter-R, Letter, Legal, 11" x 17" Letter, 11" x 17"
Double Stapling:	
Saddle-Stitching:	
Acceptable Paper Sizes:	Letter-R, 11" x 17"
Capacity/Tray:	1 to 5 Sheets: 25 Sets 6 to 10 Sheets: 15 Sets 11 to 15 Sheets: 10 Sets 15 Sheets V-Fold
Max. Stapling Capacity/Set:	
Folding:	
Color Network Multi-PDL Printer Kit-A2 (Optional)	
Type:	Embedded Print Controller
Processor:	Canon Custom Processor-Shared
RAM:	1GB-Shared

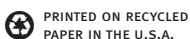
Hard Disk:	40GB-Shared
PDL Support:	UFR, PCL 5c, PostScript® 3 [†] Emulation, PDF 1.3
Interface Connections:	
Standard:	10/100Base-T (RJ-45)
Optional:	Token Ring (Token Ring Network Interface Adaptor iN-TR2), USB Full-Speed (USB Interface Board-A3) (1.1 Equivalent)
imagePASS-C2* (Optional)	
Type:	External (Back-mount) Print Controller
Processor:	Intel® Mobile Celeron M 1.2GHz
RAM:	256MB Standard, 512MB Max.
Hard Disk:	80GB
PDL Support:	PCL 5c, Adobe PostScript 3
Optional Accessories:	Densitometer ED-100 Impose v2.6 Secure Erase v1.0
Interface Connections:	10/100/1000Base-T (RJ-45)
ColorPASS-Z3000†	
Type:	External Stand-Alone Controller
Processor:	Intel Pentium 4 2.4GHz
RAM:	256MB Standard, 512MB Max.
Hard Disk:	60GB
PDL Support:	Genuine Adobe PostScript 3
Optional Accessories:	Advanced Controller Interface Kit Graphic Arts Feature Set Enhanced DocBuilder Pro v2.2 Densitometer ED-100
Interface Connection:	10/100/1000Base-T
Other Optional Accessories and Utilities	
	<ul style="list-style-type: none"> • Color Image Reader-C1*** • imageRUNNER Security Kit-A1P • imageRUNNER Copy Control Interface Cable • FL Cassette-X1 • Braille Label Kit-A1 • USB Application Interface Board-C1 • Color Universal Send Kit-A2P†† • Color Universal Send PDF Encryption Kit-A1* • Key Switch Unit-A2 • Platen Cover Type G* • Card Reader-D1 • Card Sets • imageWARE Suite • NetSpot Suite • eCopy Suite • Super G3 Fax Board-M2 • Resolution Switching Board-A2 • Plain Pedestal-C1 • Copy Tray Unit-H1
	<p>* Either the DADF-K1 or the Platen Cover Type G is required for copy function.</p> <p>** Requires either the Cassette Feeding Unit-X1 or the Plain Pedestal-C1 for installation.</p> <p>† ColorPASS-Z3000 is only compatible with the Color imageRUNNER C3220. Please reference the ColorPASS-Z3000 specification sheet for additional information.</p> <p>†† Requires Resolution Switching Board-A2.</p> <p>‡ Please call your Authorized Canon Dealer for availability.</p> <p>‡‡ Option for Color imageRUNNER C3220 printer model only.</p> <p>‡‡‡ Requires Color Universal Send Kit-A2P.</p>
	For more information, please contact your Authorized Canon Dealer.

Adobe and PostScript are registered trademarks of Adobe Systems Incorporated in the United States and/or other countries. Command WorkStation is a registered trademark of Electronics for Imaging, Inc. in the U.S. Patent and Trademark Office and/or certain other foreign jurisdictions. eCopy ShareScan is a trademark of eCopy, Inc. CANON, IMAGERUNNER, MEAP, and NETSPOT are registered trademarks, and the GENUINE logo and UNIVERSAL SEND are trademarks of Canon Inc. in the United States and may also be registered trademarks or trademarks in other countries. REMOTE UI is a trademark of Canon U.S.A., Inc. IMAGEWARE is a registered trademark of Canon U.S.A., Inc. in the United States and is a trademark of Canon Inc. in certain other countries. IMAGEANYWARE is a trademark of Canon. All referenced product names and other marks are trademarks of their respective owners. All specifications are subject to change without notice. ©2005 Canon U.S.A., Inc. All rights reserved.

Federal Law prohibits copying of certain documents. Violators may be subject to penalties. We suggest that you check with your own legal counsel. Canon U.S.A., Inc. and Canon Canada, Inc. intend to cooperate with Law Enforcement Agencies in connection with claims of unauthorized copying.

0058W638

1205R-C3220/C2620-30M-PI5



PRINTED ON RECYCLED PAPER IN THE U.S.A.



Canon
image*ANYWARE*

1-800-OK-CANON
www.usa.canon.com

Canon U.S.A., Inc.
One Canon Plaza
Lake Success, NY 11042