

Canon



CORPORATE SOLUTIONS



 **Color
imageRUNNER®**
C3380 / C2880 SERIES


meap
POWERED BY

CORPORATE SOLUTIONS

INTRODUCING THE COLOR imageRUNNER C3380/C2880 SERIES. QUALITY COLOR HAS A NEW ADDRESS — YOUR OFFICE.

Smart Color in the Office



 **Color
imageRUNNER®**
C3380 / C2880 SERIES

Achieving high productivity from your office multifunction system becomes a reality when your office is powered by the Canon Color imageRUNNER C3380/C2880 Series devices. With robust functionality, advanced print engine technology, superior paper handling, and professional finishing options, it's the ideal solution for business performance.

The Color imageRUNNER C3380/C2880 Series devices deliver output at speeds of up to 33/28 ppm (letter), respectively, in monochrome and up to 30/26 ppm (letter), respectively, in brilliant color. And with Canon's new Color On-Demand Fusing Technology using QF (Quick Fixing) Color Toner, you'll realize short warm-up and first-copy-out times as well as low energy consumption.

BIG FEATURES, SMALL FOOTPRINT, AND IMPRESSIVE COLOR. EVERY DAY.

The Color imageRUNNER C3380/C2880 Series devices have a much smaller footprint than other multifunction devices. They also feature a short vertical paper path. Using the new Accelerated Paper Feeding Method, quick printing of both single- and double-sided documents is simple. And every word will appear with absolute clarity at 1200 dpi with the new four-in-one laser scanner. An optional internal finisher is available, so productivity won't be sacrificed for a compact design.

Two versions of the Color imageRUNNER C3380/C2880 Series devices are available—an “i” model and a “Base” model. The “i” model, designed for general office environments, is preconfigured with features that provide out-of-the-box business productivity; the “Base” model is highly configurable and offers a choice of options to best fit your office needs. Each model includes Canon's UFR II (Ultra Fast Rendering) print controller standard.

The Color imageRUNNER C3380/C2880 Series models provide memory capacity of up to 1.5GB, an 80GB hard drive, and Canon's innovative MEAP® (Multifunctional Embedded Application Platform) technology for customized workflows. With high capacity finishing options, professional output is available for any project.

The Color imageRUNNER C3380/C2880 Series devices enable efficient document distribution with Canon's Color Universal Send technology. Standard on all models, it provides comprehensive, simultaneous dissemination of information to multiple locations, across the hall or around the globe.

Function	Color imageRUNNER C3380/C2880	Color imageRUNNER C3380i/C2880i
Copy	Standard	
Mail Box	Standard	
Print	Standard: UFR II Optional:* PCL, PostScript® Emulation,** Adobe® PostScript 3™	Standard: UFR II, PCL Optional: PostScript Emulation***
Scan	Standard: Color Network ScanGear	
Color Universal Send	Standard: Color Universal Send	
	Optional: Universal Send PDF Advanced Feature-Set	Standard: Universal Send PDF Advanced Feature-Set
	Optional: Universal Send PDF Security Feature-Set	Standard: Universal Send PDF Security Feature-Set
Super G3 Fax	Optional: Single-Line or Multi-Line	
Web Access	Optional	
MEAP	Standard	

* Choose one of two print controller options: PCL Printer Kit-Q1 or imagePASS-J1

** PS Printer Kit-Q1 option requires the PCL Printer Kit-Q1; also requires 512MB RAM.

*** Requires 512MB RAM.

COLOR imageRUNNER C3380/C2880 SERIES OVERVIEW

Productivity at your fingertips



EFFICIENCY

Canon's new imageCHIP architecture provides increased speed, power, and functionality.



HIGH QUALITY AND PRODUCTIVITY

Copy, scan, store, print, send, and fax documents quickly with one conveniently compact device.



SCALABILITY

Enhance document management with MEAP technology to create custom applications, interfaces, and workflows.



SUPERIOR COMMUNICATION

Create and store documents with powerful tools and distribute them easily with standard Color Universal Send technology.



POWERFUL IMAGING

Extend your device with options and software for increased productivity in demanding color environments.



INTERNET-READY

Collaborate on your documents via the Internet or browse and print Web content right from the device.



USER-FRIENDLY

Searchable CD-based manuals and easy-to-use color display panel with guided help key for users, and advanced tools for administrators.



SECURITY AND ACCESSIBILITY

Advanced security features and options help protect your data, while accessibility options provide access to all users.



THE COMPACT DEVICE WITH EVERYTHING YOU NEED TO SUCCEED

Canon imageCHIP System Architecture

- imageCHIP Architecture Provides More Speed and Power for Greater Productivity
- Up to 1.5GB RAM and 80GB HDD
- Dedicated Dual Processor Design
- Mail Box: Local Archival Solution
- Remote UI Device Management



Efficient Speeds

- C3380 (Black and White/Color): Up to 33/30 ppm
- C2880 (Black and White/Color): Up to 28/26 ppm
- Quick 38-Second Warm-Up Time
- Fast First-Copy-Out Times: B/W: 5.9 Seconds, Color: 8.9 Seconds
- Up to 44-ipm High-Speed Color and Black-and-White Scanning
- 50-Sheet DADF Standard on “i” Models, Optional on “Base” Models

Reliable Consumables and Supplies

- Individual OPC Drum Units
- Easy-To-Replace Set-On Toner Cartridges
- Oil-Free Quick Fixing (QF) Color Toners



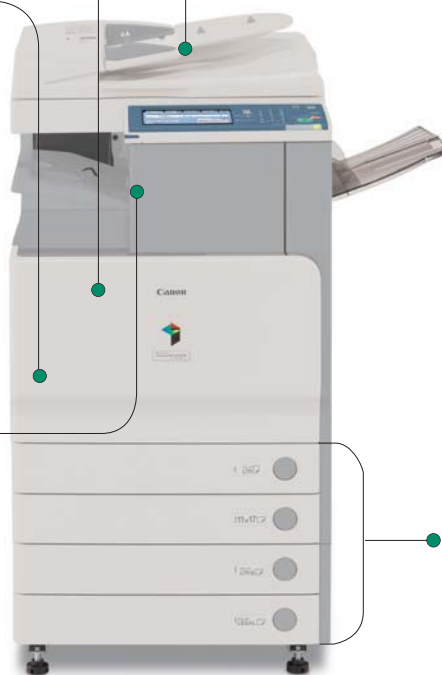
Accessibility Options

- Voice Operation Kit
- Remote Operator’s Software Kit
- ADF Access Handle
- Braille Label Kit



Advanced Finishing Options

- Internal Finisher (shown) Maintains Footprint
- Three Types of Finishers
 - Corner, Double, or Saddle-Stitched Stapling
 - Extensive Stacking Capacity
- Hole-Punching
 - Two or Three Holes



Superior Paper-Handling

- Up to 4,950-Sheet Paper Capacity
- 50-Sheet Bypass Tray
- Up to 110 lb. Index Media Weights
- Up to 12" x 18" Media Sizes

Finisher-Z1	Finisher-Y1	Saddle Finisher-Y2	Puncher Unit-M1	Cassette Feeding Unit-Y3	Cabinet-P1	Paper Deck-Z1



HIGH QUALITY AND PRODUCTIVITY

The features you want, the performance you need

The Color imageRUNNER C3380/C2880 Series models deliver the powerful performance and rich functionality that your office needs, in a compact and affordable device.

NEW-GENERATION IMAGE PROCESSING

The Color imageRUNNER C3380/C2880 Series is powered by Canon's new evolutionary imageCHIP system architecture. This not only enables simultaneous copying, printing, scanning, sending, and faxing, but it will change the way you think about using color in your office.

IMAGE QUALITY OPTIMIZATION

Canon has developed technologies that improve the image quality and performance of this latest Series of Color imageRUNNER devices. The Enhanced Resolution System (ERS) optimizes print performance by accelerating the rasterization of 1200-dpi print data. Advanced Smoothing Technology (AST) increases image quality by smoothing the edges of printed text and graphics.

imageCHIP System Architecture



COMPLEX JOBS MADE SIMPLE

The Color imageRUNNER C3380/C2880 Series devices make the production of complicated documents manageable. Combine different sets of documents into one with Job Block Combination. Each set can be configured to run with unique settings, such as paper type, finishing, color, and more, then reproduced or stored as a new document in a Mail Box.

DIGITAL DYNAMICS

Adding digital data to copies and prints is easy and powerful. Create ad hoc watermarks, select preset stamps, add page and copy set numbering, and/or date stamping to any output with control over the size, position, colors, and density. You can also embed secure watermarks that appear when copies are made to help prevent security leaks of confidential information.

Secure Watermark



Original document with hidden text and background color

Hidden text appears on copies that are made

THE PERFECT FINISHING TOUCHES

The Color imageRUNNER C3380/C2880 Series models offer an optional internal finisher that can corner or double-staple multi-page documents without increasing the footprint of the device. For enhanced productivity, additional options provide the ability to print envelopes, hole-punch, or saddle-stitch to create impressive documents.

BRILLIANT BUSINESS COLOR

General office environments that print Microsoft® Office documents will benefit from the standard UFR II print controller on the Color imageRUNNER C3380/C2880 Series devices. The UFR II controller is optimized to facilitate high-speed color printing by distributing the data processing between the print driver on the user's desktop computer and the controller. Additional options that provide support for PCL,* PostScript emulation, and Adobe PostScript are available.

FAST COPYING AND SCANNING

Copy operations are greatly simplified through the choice of two user interfaces. The standard copy display simplifies operations for novice users, while an Express Copy menu provides advanced users quick access to various copying modes on a single screen. With the 50-sheet Duplexing Automatic Document Feeder (DADF) accessory,* you can scan/copy documents at up to 44 impressions per minute (ipm) at 300 dpi in black and white and color.

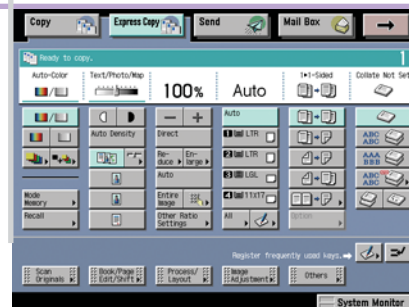
Internal Finisher-Z1



Saddle Finisher-Y2



Express Copy Screen



*Standard on the "i" models.



SUPERIOR COMMUNICATION

Enhance your digital world with Color Universal Send

With Canon's proprietary Color Universal Send technology standard on all models, the Color imageRUNNER C3380/C2880 Series devices enable you to distribute scanned documents to multiple network destinations—such as e-mail and Internet fax addresses, local Mail Boxes, fax, network folders, and document management systems—in one simple operation. Quickly and easily send documents to user addresses in a local Address Book, look up users from multiple LDAP servers on your network, or manually enter a destination. When Single Sign-On (SSO) or Simple Device Log-in (SDL) authentication modes are used, a new time-saving feature enables you to send documents to yourself in a single click.

Color Universal Send offers powerful options to master the creation, distribution, and archiving of your documents. Universal Send PDF Advanced Features* provide additional functionality such as PDF High Compression, Trace & Smooth PDF, and Searchable PDF modes.



Universal Send

FILE SIZE COMPARISON

Original: Letter-Sized Hard Copy (Color Graphics with Text)



Canon's PDF (Compact)
300-dpi Color Scan
File Size: **150 KB**

PDF File Format
300-dpi Color Scan
File Size: **2 MB**

PDF File Format
300-dpi B/W Scan
File Size: **390 KB**

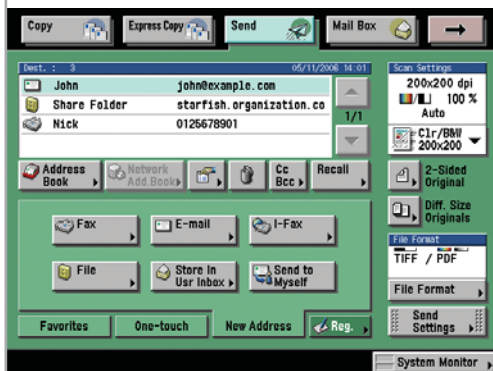
PDF High Compression Mode

PDF HIGH COMPRESSION TECHNOLOGY

Canon's proprietary PDF High Compression Mode makes more efficient use of your network and storage resources by significantly reducing the size of PDF files. And with the exclusive Trace & Smooth PDF feature, text in PDF files can be converted to outlines for sharper edges and increased readability.

CREATING SEARCHABLE PDF DOCUMENTS

After scanning for PDF creation, the text is then embedded within the file for extraction or keyword searches with the Searchable PDF feature. This allows you to easily scan and convert scanned documents into your electronic workflow.



Send Main Menu

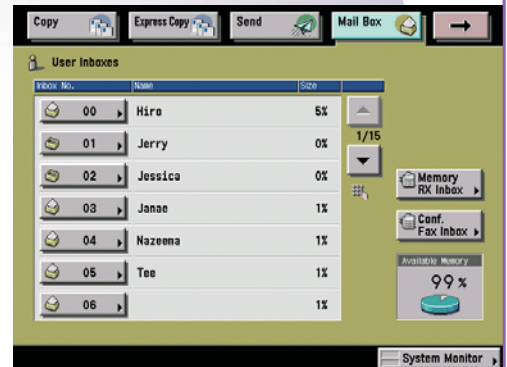
*Standard on the "i" models.

HIGH-VOLUME FAX CAPABILITY

The Color imageRUNNER C3380/C2880 Series devices support the option to add a single- or multi-line Super G3 fax module to further extend the capabilities of Color Universal Send. Incoming faxes can also be automatically routed to other devices, destinations, or users with the Job Forwarding feature for superior workflow management.

ADVANCED WORKGROUP COLLABORATION

The Color imageRUNNER C3380/C2880 Series models include internal Mail Boxes for document storage and print-on-demand applications. Documents can be combined and printed as a single job or sent to multiple destinations in a variety of formats. For files that are too large for e-mail or require a large distribution list, the URL Send feature can e-mail a link to notify recipients that they can remotely preview via PC and, if necessary, print from the device.

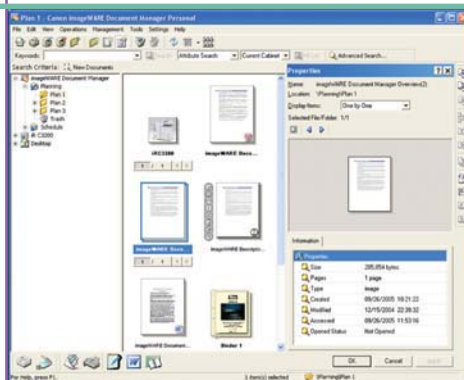


Mail Box

DESKTOP INTEGRATION

The Color imageRUNNER C3380/C2880 Series devices are designed to work seamlessly with Canon's imageWARE™ Document Manager Personal Version 4 as a total end-to-end document solution, enhancing the integration between your workspace and the device.

imageWARE Document Manager Personal Version 4





INTERNET-READY

Web-savvy solutions that evolve with your business

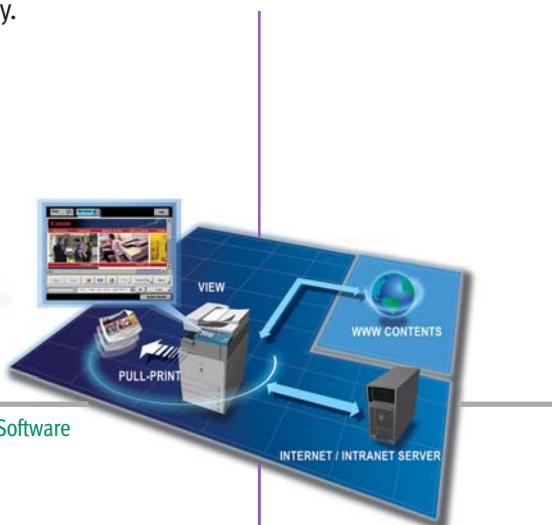
The Color imageRUNNER C3380/C2880 Series devices provide more ways to share information with the world beyond your office than ever before. And as your business grows, it will continue to provide value with features and options designed to extend your capabilities.

WEB BROWSING AND PRINTING

With the industry's first Web Access Software option, you can browse the Web or corporate intranets directly from the device's color touch-panel display. The Web Access function enables you to print Web pages or PDF files from the Internet or your network, even when you don't have access to a computer.*

WEB-BASED DOCUMENT COLLABORATION

Color Universal Send supports the Web-based Distributed Authoring and Versioning (WebDAV) protocol, enabling you to securely send documents to a shared storage service over the Internet. Collaborate on documents with others, whether they're in the office, on the road, or at home for increased productivity.



SCALABILITY

imageWARE Document Manager



eCopy ShareScan OP

OPEN PLATFORM INTEGRATION

With Canon's Java-based MEAP architecture, you can design custom interfaces and applications to run on the Color imageRUNNER C3380/C2880 Series devices' color touch-panel. MEAP applications can be easily created to support customized workflows for the seamless integration of your business processes.

POWERFUL DOCUMENT MANAGEMENT

Canon offers industry-leading solutions for effective production, archiving and retrieval of critical business documents. Canon's imageWARE Publishing Manager software can create documents comprised from many different sources and applications using a simple drag-and-drop interface. And Canon's optional imageWARE Document Manager software enables you to efficiently store vast amounts of information in a centralized electronic repository for easy, secure, and effective document management.

* Requires PS Printer Kit-Q1 if printing PDF files.



POWERFUL IMAGING

Flexible color productivity for your office

Canon offers a flexible print controller option for the Color imageRUNNER C3380/C2880 Series “Base” model that increases productivity and color quality in more demanding color environments.

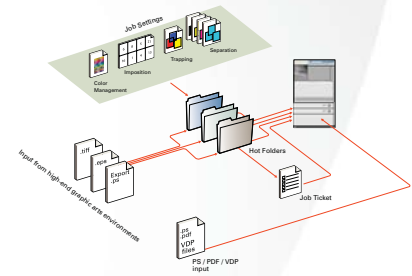
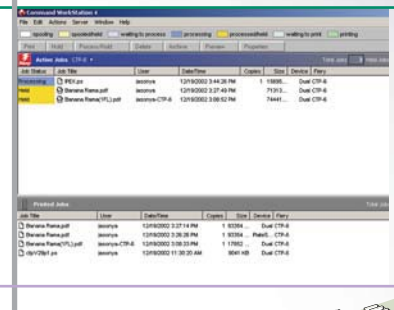
IMAGEPASS-J1 CONTROLLER

The imagePASS-J1 is a high-performance embedded controller designed to handle color-intensive multiuser environments. Featuring a dedicated Intel® Celeron® M 1.2GHz processor and memory capacity of up to 512MB of RAM, the imagePASS-J1 provides improved color matching, document management tools, and support for PCL and genuine Adobe PostScript 3.

INDUSTRY-LEADING TOOLS

The imagePASS-J1 is further enhanced by the latest system software version 8e, which improves overall productivity and functionality. These enhancements provide total control of workflow and image quality on the Canon Color imageRUNNER C3380/C2880 Series “Base” models—from mastering document imposition to better color accuracy.

Command WorkStation



Hot Folders

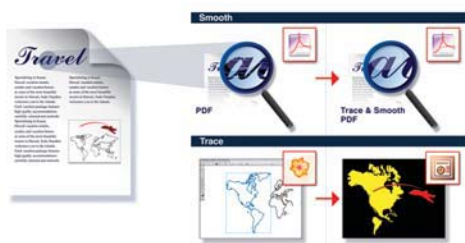
HOT FOLDERS WITH VIRTUAL PRINTERS

Increase your document production capabilities by adding optional components that streamline printing. Hot Folders save time for users by providing the ability to drag-and-drop documents into designated folders for complex print jobs. Virtual Printers is a utility allowing administrators to create network-accessible printers that are configured for specific print jobs.

TRACE & SMOOTH PDF

PDF High Compression Mode offers Trace & Smooth PDF functionality (standard on “i” models), which can convert text and line art in scanned documents to scalable artwork (vector graphics data) in PDF format.* The vector graphics can then be manipulated in Adobe Illustrator® to create elements for other documents.

Trace & Smooth PDF



* Results may vary.



USER-FRIENDLY

Simplicity for users

The Color imageRUNNER C3380/C2880 Series models are designed to make you more productive with an easy-to-read, full-color touch-panel, interactive help menus, and more useful documentation and tutorials. Remote tools enable you to monitor and perform operations on the device from any computer on the network.

Help Key



Control Panel

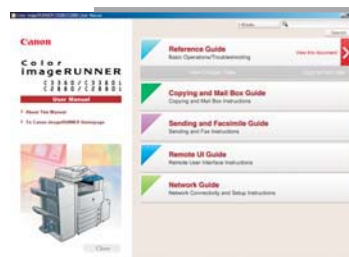


Easy Operation Guide and Tutorial CD

REMOTE UI (USER INTERFACE)

The Color imageRUNNER C3380/C2880 Series devices can be accessed through a Web browser from any computer on the network. The Remote UI utility provides the ability to check the status of the device, track the progress of current jobs, monitor paper and toner levels, administer the Mail Box, and edit the Address Book.

Electronic User Manuals



SUPPORT TOOLS FOR OPERATORS

Whether you're a beginner or an advanced user, the Canon Color imageRUNNER C3380/C2880 Series devices are easy to navigate. The Easy Operation Guide provides step-by-step instructions on the operation of the device's main functions. And the [Help] hard key on the device provides instructions and explanations for operation. The user manuals for the device are CD-based and feature search tools to find answers quickly and easily. Macromedia® Flash® Tutorials are also available and can be distributed through your network or corporate intranet for smooth deployment.

...and for administrators

The Color imageRUNNER C3380/C2880 Series devices include features that control user access and privileges to the device as well as the ability to facilitate the management of one or many devices throughout your enterprise.

FLEXIBLE USER ADMINISTRATION

Administrators have a choice of methods to control access and privileges to the Color imageRUNNER C3380/C2880 Series devices. Authentication schemes include Single Sign-On (SSO) using network accounts, Simple Device Log-in (SDL), and Department ID Mode with optional Control Card/Card Reader system.

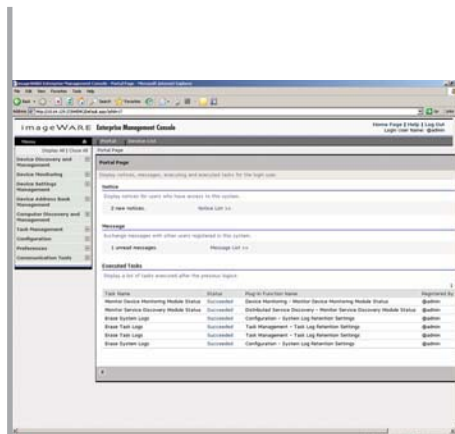
COMPREHENSIVE DEVICE MANAGEMENT

Canon's imageWARE Enterprise Management Console (EMC) is a Web-based utility that facilitates centralized management of networked devices. Built on an extensible framework, it enables remote management of device settings, discovery of new devices using automated tasks, and device error notifications via e-mail. Administrators can also easily replicate settings and Address Books across multiple devices through the Device Information Delivery Function (DIDF), as well as push-print drivers to PC-based desktop computers for rapid deployment.

Card Reader



Single Sign-On Log-In Screen



imageWARE Enterprise Management Console



SECURITY AND ACCESSIBILITY

DEVICE AND DATA SECURITY

The Color imageRUNNER C3380/C2880 Series provides user-level authentication to prevent unauthorized access. In addition to user-level authentication, access to the device can be restricted by network port or IP/MAC address. To protect your stored, scanned, and printed data, the HDD Data Erase option permanently removes deleted files by overwriting them up to three times. The HDD Data Encryption option provides additional security by encrypting data before it is written to the hard disk drive, and has achieved Common Criteria (CC) certification.

Document Security

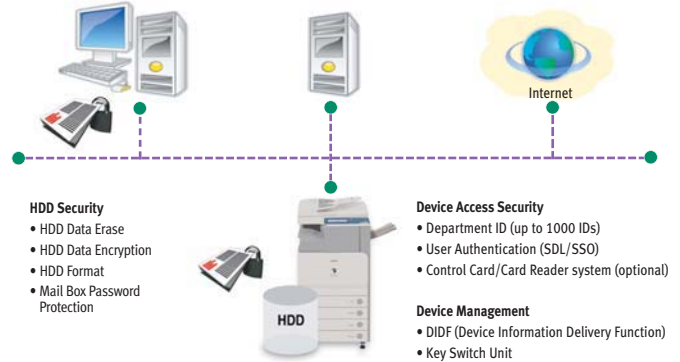
- Encrypted Secured Print
- Watermark/Secure Watermark
- Copy Set Numbering
- Encrypted PDF
- FAX Forwarding
- FAX Destination Confirmation

Mail Server Security

- POP Authentication before SMTP
- SMTP Authentication

Network Security

- MAC Address Filtering
- IP Address Filtering
- SSL Encryption
- Network Application On/Off
- USB Block
- Destination Restriction



Device Management and Security Overview



Digital Signature PDF

DOCUMENT SECURITY

The Universal Send PDF Security Feature Set option* prevents impersonation or interception of your documents. Digital Device Signature mode and optional Digital User Signature mode provide verification of a document's source. You can also password-protect your documents with the Encrypted PDF feature, and securely print them over the network using the Encrypted Secured Print feature.

ACCESSIBILITY

Canon offers solutions that go even further to ensure access for every authorized user of the Color imageRUNNER C3380/C2880 Series devices. The device can be controlled with spoken commands using the Voice Operation Kit, the first Canon release of its kind for the U.S. market, which provides speech synthesis and voice recognition for individuals who are blind, have poor vision, or mobility/dexterity impairments.



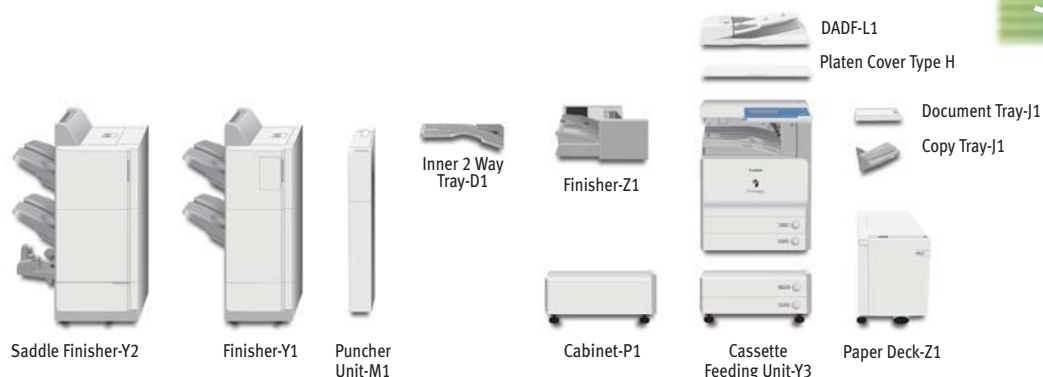
Voice Operation Kit



Encrypted Secured Print

*Standard on the "i" models.

SPECIFICATIONS



MAIN UNIT		OPTIONAL ACCESSORIES	
Type:	Color Digital Multifunction Imaging System	Power Consumption:	1,500W
Copying Method:	Laser Dry Electrostatic Transfer	Plug:	NEMA 5-15P
Developing System:	Dry Dual Component Developing System	Toner (Estimated Yield):	Black: 26,000 Images @ 5% Coverage Color: 14,000 Images @ 5% Coverage
Memory:	Standard 1GB RAM Maximum 1.5GB RAM	Copy Features	
Hard Disk Drive:	80GB	Multiple Copies:	1 to 999
Network Interface Connections:	10/100Base-TX (RJ-45)	Max. Copy Reservation:	10 Jobs
Other Interface:	USB 2.0 (Device), USB 2.0 (Host)	Color Mode:	Auto Color, Full Color, Black, Single Color, Two Colors
First-Copy Time:	8.9 Seconds (Color) 5.9 Seconds (B/W)	Copy Exposure:	Automatic or Manual (9 Levels)
Warm-Up Time:	38 Seconds After Powering On	Magnification	
Copy/Print Speed (B/W, Color):	C3380/C3380i: 33/30 ppm (Letter) C2880/C2880i: 28/26 ppm (Letter)	Preset Reduction:	25%, 50%, 64%, 73%, 78%
Scan Resolution:	600 dpi x 600 dpi	Preset Enlargement:	121%, 129%, 200%, 400%
Copy Resolution:	600 dpi x 600 dpi	Zoom Mode:	25% - 400% (1% increments)
Engine Resolution:	1200 dpi x 1200 dpi	Print Features	
Halftone:	256 Gradations (Continuous-Tone)	CPU:	Canon Dual Custom Processor (Shared)
Paper Sources		Memory:	1GB RAM (Standard) 1.5GB RAM (Maximum) (Shared)
Standard:	Dual 550-Sheet x 2 Paper Cassettes 50-Sheet Stack Bypass	Hard Disk Drive:	80GB (Shared)
Optional:	Dual 550-Sheet x 2 Paper Cassettes 2,700-Sheet Paper Deck	Print Resolution	
Maximum:	4,950 Sheets	UFR II:	1200 dpi x 1200 dpi* (Text and Line Only) 2400 dpi equivalent x 600 dpi
Paper Sizes		Printer Driver	
Drawers:	12" x 18", 11" x 17", Legal, Letter, Letter-R, Statement-R, Executive	UFR II:	Windows® (Windows 2000/XP/Server 2003, Citrix MetaFrame), Macintosh® (OS 10.2.8 or later)
Bypass:	12-5/8" x 17-11/16", 12" x 18", 11" x 17", Legal, Letter, Letter-R, Statement, Statement-R, Executive, Irregular size (3-7/8" x 5-9/16" to 12-5/8" x 18") and Envelopes	Mail Box Features	
Acceptable Paper Weight		Max. Mail Boxes Supported:	100 User Inboxes, 1 Memory RX Inbox, 50 Confidential Fax Inboxes
Drawers:	17 lb. Bond to 90 lb. Index	Scan Features	
Bypass:	17 lb. Bond to 110 lb. Index	Network TWAIN Scan:	Standard
Duplexing:	Standard Automatic Trayless Duplexing (Executive to 12" x 18")	Network Scan Utility:	Color Network ScanGear
Image Reader:	Standard	Color Universal Send Features	
Acceptable Originals:	Sheet, Book, 3-Dimensional Objects (Up to 4.4 lb.)	Color Mode:	Auto Color Select (Full Color/Grayscale) Auto Color Select (Full Color, B/W) Full Color, Grayscale, B/W
Maximum Original Size:	11" x 17"	Address Book Capacity:	Max. 1,800 Destinations (Includes 200 One-Touch Buttons) Max. 5 LDAP Servers
Document Feeding Method:	Duplexing Automatic Document Feeder (Standard on "i" Models)	Sending Methods:	E-Mail, I-FAX, SMB, File Server (FTP, IPX, WebDAV), User Inbox, Super G3 Fax (Optional)
Acceptable Originals:	Statement to 11" x 17"	Communication Protocol	
Paper Capacity:	50 Sheets	File:	FTP (TCP/IP), SMB (TCP/IP), NCP (IPX), WebDAV
Acceptable Paper Weight of Originals:	Simplex 11 lb. to 32 lb. Bond (42 to 128 g/m ²) Duplex 13 lb. to 32 lb. Bond (50 to 128 g/m ²)	E-Mail/I-Fax:	SMTP, POP3, I-FAX (Simple, Full)
Scan Speed:	44 ipm (300 dpi) 28 ipm (600 dpi)	Data Format	
Dimensions (H x W x D):	31-1/8" x 22-1/4" x 29-3/4" (Main Unit) 36" x 22-1/4" x 29-3/4" (with DADF) 34" x 29-3/4" (when the Stack Bypass is extended)	File, E-Mail:	TIFF, JPEG, PDF, PDF (Compact),** PDF (Trace & Smooth),** PDF (OCR),** Encrypted PDF,*** Digital Signature PDF (Device,*** User)
Installation Space (W x D):	34" x 29-3/4" (when the Stack Bypass is extended)	I-Fax:	B/W: TIFF (MH, MR, MMR) Color: TIFF (Profile-C)
Weight:	Approximately 256 lb. (116kg Main Unit) Approximately 275 lb. (125kg with DADF)		
Power Requirements:	120V AC, 60Hz, 15A		
		OPTIONAL ACCESSORIES	
		Super G3 Fax Board-W1/Super G3 Multi-Line Fax Board-J1	
		Applicable Line:	Public Switched Telephone Network (PSTN)
		Connection Lines:	One-Line (Super G3 Fax Board W1), Two-Lines (Super G3 Multi-Line Fax Board-J1)
		Sending/Original Size:	Statement to 11" x 17"
		Recording/Printing Size:	Statement to 11" x 17"
		PCL Printer Kit-Q1 (Standard for "i" Models)**	
		CPU:	Canon Dual Custom Processor (Shared)
		Memory:	1GB RAM (Standard) 1.5GB RAM (Maximum) (Shared)
		Hard Disk Drive:	80GB (Shared)
		Supported PDL:	PCL 5c
		Optional PDL Support:	PostScript 3 Emulation (PS Printer Kit-Q1**)
		Print Resolution	
		PCL 5c:	2400 dpi equivalent x 600 dpi
		PS3 (Optional):	1200 dpi x 1200 dpi* (Text and Line Only) 2400 dpi equivalent x 600 dpi
		Printer Drivers	
		PCL 5c:	Windows (Windows 98/Me/2000/XP/Server 2003, Citrix MetaFrame)
		PS3 (Optional):	Windows (Windows 98/Me/2000/XP/Server 2003, Citrix MetaFrame), Macintosh (OS 10.2.8 or later)
		imagePASS-J1	
		Connectable Device:	Color imageRUNNER C3380/C2880
		CPU:	Celeron M 1.2GHz
		System:	8e
		Memory:	256MB (Std.)/512MB (Max.)
		Hard Disk Drive:	80GB
		Interfaces (to LAN):	10/100/1000Base-T (RJ-45)
		Supported PDL:	Adobe® PostScript® 3, PCL 5c
		Print Resolution:	1200 dpi x 1200 dpi* (Text Only) 2400 dpi equivalent x 600 dpi
		Utility Software:	Remote Scan Command WorkStation for Windows Command WorkStation for Mac
		EFI Options:	256MB RAM, Secure Erase v1.0, Hot Folders v2.0, Impose v2.6
		Cassette Feeding Unit-Y3	
		Paper Sizes:	12" x 18", 11" x 17", Legal, Letter, Letter-R, Statement-R, Executive
		Paper Drawers Capacity:	550-Sheet x 2 Cassettes [20 lb. Bond (80 g/m ²)]
		Dimensions (H x W x D):	9-7/8" x 22-1/4" x 27-5/8"
		Weight:	Approximately 50.7 lb. (23kg)
		Paper Deck-Z1	
		Paper Size:	Letter
		Paper Deck Capacity:	2,700 Sheets [20 lb. Bond (80 g/m ²)]
		Dimensions (H x W x D):	18-5/8" x 14-5/8" x 23-1/4"
		Installation Space (W x D):	36-7/8" x 29-3/4"
		Weight:	Approximately 65.3 lb. (29.6kg)
		Finisher-Z1	
		Number of Trays:	1 Tray

Paper Size	
Standard:	12-5/8" x 17-11/16", 12" x 18", 11" x 17", Legal, Letter, Letter-R, Statement, Statement-R, Envelopes (COM10 No. 10, Monarch, DL, ISO-B5, ISO-C5, Yougata 4, Catalog Glove No.8)
Non-Standard Size:	3-7/8" x 5-9/16" to 12-5/8" x 18"
Paper Weight:	17 lb. Bond to 80 lb. Cover
Paper Capacity Per Tray:	500 Sheets (Letter, Statement, Statement-R) or 2-3/4" in Height 250 Sheets (11" x 17", Legal, Letter-R) or 1-3/8" in Height
Paper Capacity of Staple Mode:	
	500 Sheets/30 Sets (Letter) or 2-3/4" in Height 250 Sheets/30 Sets (11" x 17", Legal, Letter-R) or 1-3/8" in Height 500 Sheets/30 Sets (Staple Mode with Different Paper Sizes) or 2-3/4" in Height
Max. Stapling Capacity	
Letter:	50 Sheets (17 lb. to 20 lb. Bond) 30 Sheets (20 lb. to 28 lb. Bond) 2 Sheets (32 lb. Bond to 90 lb. Index)
11" x 17", Legal, Letter-R:	30 Sheets (17 lb. to 20 lb. Bond) 20 Sheets (20 lb. to 28 lb. Bond) 2 Sheets (32 lb. Bond to 90 lb. Index)
Staple Mode:	
	Corner (11" x 17", Legal, Letter, Letter-R) Double (11" x 17", Letter)
Dimensions (H x W x D):	8-1/2" x 27-3/8" x 21-5/8"
Installation Space (W x D):	42" x 29-3/4" (when the Auxiliary Tray is extended)
Weight:	Approximately 26.5 lb. (12kg)
Finisher-Y1/Saddle Finisher-Y2	
Number of Trays:	2 Trays
Paper Size	
Standard:	12-5/8" x 17-11/16", 12" x 18", 11" x 17", Legal, Letter, Letter-R, Statement, Statement-R, Executive
Non-Standard Size:	3-7/8" x 5-9/16" to 12-5/8" x 18"
Paper Weight:	17 lb. Bond to 80 lb. Cover
Paper Capacity Per Tray	
Upper/Lower Tray:	1,000 Sheets (Letter, Statement, Statement-R, Executive) 500 Sheets (11" x 17", Legal, Letter-R)
Paper Capacity of Staple Mode	
Upper/Lower Tray:	1,000 Sheets/30 Sets (Letter, Executive) 500 Sheets/30 Sets (11" x 17", Legal, Letter-R) 500 Sheets/30 Sets (Staple Mode with Different Paper Sizes)

Max. Stapling Capacity	
Letter, Executive:	50 Sheets (17 lb. to 20 lb. Bond) 30 Sheets (20 lb. to 28 lb. Bond) 2 Sheets (32 lb. Bond to 80 lb. Cover)
11" x 17", Legal, Letter-R:	30 Sheets (17 lb. to 20 lb. Bond) 20 Sheets (20 lb. to 28 lb. Bond) 2 Sheets (32 lb. Bond to 80 lb. Cover)
Staple Mode:	
	Corner (11" x 17", Legal, Letter, Letter-R, Executive) Double (11" x 17", Legal, Letter, Letter-R, Executive)
Saddle-Stitching[▲]	
Acceptable Paper Sizes:	12" x 18", 11" x 17", Legal, Letter-R
Saddle-Stitch Capacity:	15 Sheets (17 lb. to 20 lb. Bond) 10 Sheets (20 lb. to 28 lb. Bond)
Tray Capacity:	
	25 Sets (1 to 5 Sheets) 15 Sets (6 to 10 Sheets) 10 Sets (11 to 15 Sheets)
Dimensions (H x W x D)	
Finisher-Y1:	42-1/4" x 26-1/8" x 25-7/8"
Saddle Finisher-Y2:	42-1/4" x 29-3/8" x 25-7/8"
Installation Space (W x D)	
Finisher-Y1:	59-3/8" x 29-3/4" (when the Auxiliary Tray is extended)
Saddle Finisher-Y2:	63-1/4" x 29-3/4" (when the Auxiliary Tray is extended)
Weight	
Finisher-Y1:	Approximately 96.1 lb. (43.6kg)
Saddle Finisher-Y2:	Approximately 162 lb. (73.6kg)
Inner 2 Way Tray-D1	
Paper Size	
Standard:	12-5/8" x 17-11/16", 12" x 18", 11" x 17", Legal, Letter, Letter-R, Statement, Statement-R, Executive
Non-Standard:	3-7/8" x 5-9/16" to 12-5/8" x 18"
Max. Paper Weight:	
	17 lb. Bond to 80 lb. Cover
Paper Capacity Per Tray	
Upper Output Tray:	100 Sheets (Letter) 50 Sheets (Other Sizes)
Lower Output Tray:	250 Sheets (Letter) 100 Sheets (Other Sizes)
Dimensions (H x W x D):	
Installation Space (W x D):	6" x 7" x 21-1/2" 34" x 29-3/4"
Weight:	Approximately 8.6 lb. (3.9kg)

Puncher Unit-M1^{▲▲}

Paper Size	
Standard:	11" x 17", Legal, Letter, Letter-R, Executive
Max. Paper Weight:	17 lb. Bond to 80 lb. Cover
Punch Type:	3 Holes (Letter, 11" x 17") 2 Holes (Legal, Letter-R, Executive)
Punch Waste Tray Capacity:	When Approximately 3,000 Sheets of Paper Have Been Punched
Dimensions (H x W x D):	37-1/8" x 4-1/4" x 24-1/2"
Weight:	Approximately 15.9 lb. (7.2kg)

OTHER OPTIONAL ACCESSORIES

- Encrypted Secured Print Software-C1[■]
- Barcode Printing Kit-A1[■]
- Web Access Software-E1[†]
- Universal Send PDF Advanced Feature Set-A1^{††}
- Universal Send PDF Security Feature Set-A1^{††}
- Digital User Signature PDF Kit-A1
- Secure Watermark-A1
- Super G3 Fax Board-W1
- Super G3 Multiline Fax Board-J1
- imageRUNNER 512MB Expansion RAM-C1
- HDD Data Erase Kit-A1
- HDD Data Encryption Kit-B1
- Voice Guidance Kit-B1
- Voice Operation Kit-A1
- Remote Operator's Software Kit-A2
- Platen Cover Type H[▲]
- Copy Tray-J1
- Envelope Feeder Attachment-C2
- FL Cassette-Y1
- FL Cassette-Z1
- Document Tray-J1
- Card Reader-C1
- Card Reader Kit-B1
- Key Switch Unit-A2
- Braille Label Kit-A1
- ADF Access Handle-A1
- Stamp Unit-A1
- eCopy Suite
- imageWARE™ Suite

Footnotes:

- * If 1200 dpi print is selected, engine speed will slow down
- ** When configured on C3380/C2880 models, requires Universal Send PDF Advanced Feature Set-A1
- *** When configured on the C3380/C2880 models, requires Universal Send PDF Security Feature Set-A1
- † Requires Digital User Signature Kit-A1
- †† Color UFR II Printing is standard on C3380/C2880 models
- ††† Requires imageRUNNER 512MB Expansion RAM-C1
- ▲ Available with Saddle Finisher-Y2 Only
- ▲▲ Puncher Unit-M1 can only be installed with either the Finisher-Y1 or Saddle Finisher-Y2
- Requires PCL Printer Kit-Q1
- When Configured on the C3380/C2880 models, requires PCL Printer Kit-Q1
- ♦ Requires PS Printer Kit-Q1 if printing PDF files
- ♦♦ Standard on C3380i/C2880i models
- ▲ Option on C3380/C2880 models

Canon
image*ANYWARE*

As an ENERGY STAR® Partner, Canon U.S.A., Inc. has determined that these products meet the ENERGY STAR guidelines for energy efficiency. ENERGY STAR and the ENERGY STAR mark are registered U.S. marks. Microsoft and Windows are registered trademarks of Microsoft Corporation in the United States and/or other countries. Adobe, Illustrator and PostScript are registered trademarks or trademarks of Adobe Systems Incorporated in the United States and/or other countries. Celeron and Intel are trademarks or registered trademarks of Intel Corporation or its subsidiaries in the United States and/or other countries. CANON, IMAGERUNNER, and MEAP are registered trademarks of Canon Inc. in the United States and may also be registered trademarks or trademarks in other countries. IMAGEWARE is a registered trademark of Canon U.S.A., Inc. in the United States and is a trademark of Canon Inc. in certain other countries. IMAGEANYWARE is a trademark of Canon. All referenced product names and other marks are trademarks of their respective owners. Specifications subject to change without notice.
©2006 Canon U.S.A., Inc. All rights reserved.

Federal Law prohibits copying of certain documents. Violators may be subject to penalties. We suggest that you check with your own legal counsel. Canon U.S.A., Inc. and Canon Canada, Inc. intend to cooperate with Law Enforcement Agencies in connection with claims of unauthorized copying.



1-800-OK-CANON
www.usa.canon.com

Canon U.S.A., Inc.
One Canon Plaza
Lake Success, NY 11042

0065W911
0906-C3380/C2880-75M-DCR

