

Canon



CORPORATE SOLUTIONS



imageRUNNER®
C5068 / C5058

meap
POWERED BY

CORPORATE SOLUTIONS

CANON imageRUNNER C5068/C5058 MODELS

Robust Black-and-White Productivity...with Color Capability

If you thought you had to sacrifice high-speed, black-and-white output to gain the ability to print occasional color, finally there's an optimal solution. Introducing the color-enabled Canon imageRUNNER C5068/C5058 models—ending the era of relying on costly desktop color products or outsourcing expenses to produce your color documents. Why settle for less when you can increase productivity, gain color scanning capabilities, and only pay for the color output you need?

The imageRUNNER C5068/C5058 models deliver impressive, high-volume, black-and-white letter-sized performance at speeds of up to 68/58 pages per minute (ppm), respectively, and color output when you need it at up to 16 ppm (letter). For faster copying and capturing of black-and-white or color documents, the standard 100-sheet Duplexing Automatic Document Feeder can scan originals at speeds of up to 70 ipm (impressions per minute) at 300 dpi. And with high-capacity finishing options, professional output is available for any project—in black and white or with a touch of color for even greater appeal.

Both imageRUNNER C5068/C5058 models come standard with Canon's Color Universal Send feature, turning your multifunction peripheral (MFP) into a powerful on-demand information distribution system. From the device's intuitive control panel, users can simultaneously send scanned color documents to multiple recipients at the touch of a button—whether they're across the hall or around the globe.

Experience enhanced workflows designed around your business processes with Canon's innovative MEAP® (Multifunctional Embedded Application Platform) technology. Increased uptime and reduced maintenance costs are benefits of the high-yield black toner and Canon's long-lasting Amorphous-Silicon (A-Si) drum. Realize uncomplicated administration through powerful features for device and network management, security, and usage monitoring. With the imageRUNNER C5068/C5058 models, the choice is yours.

Function	imageRUNNER C5068/C5058
Copy	Standard
Mail Box	Standard
Print	Optional:* UFR II, PCL 5c/PCL 6 and PostScript® Emulation,** Adobe® PostScript 3
Scan	Standard Color Network ScanGear
Color Universal Send	Standard: Color Universal Send Optional: PDF Advanced Feature Set [®] Optional: PDF Security Feature Set [®] ^{††}
Super G3 Fax	Optional
Web Access	Optional
MEAP	Standard

* Choose one of two print controller options: Color UFR II/PCL Printer Kit-Z1 or imagePASS-G1.

** PS Printer Kit-Z1 option requires UFR II/PCL Printer Kit-Z1.

[®] Universal Send PDF Advanced Feature Set includes High Compression PDF, Searchable PDF, and Trace & Smooth PDF modes.

^{††} Universal Send PDF Security Feature Set includes Digital Device Signature PDF and Encrypted PDF modes.

PROFESSIONAL-GRADE MULTIFUNCTION CAPABILITIES

Robust Engine Design

- Sturdy frame



Unparalleled Speed

- Up to 68/58 ppm (B/W); up to 16 ppm (color) printing
- Up to 70-ipm high-speed color scanning
- Standard 100-sheet Duplexing Automatic Document Feeder

Reliable Consumables and Supplies

- Durable Canon A-Si Drum
- High-yielding B/W toner and oil-free color S-toners
- B/W toner is easily replaced on-the-fly, while device is running



Canon imageCHIP Architecture

- imageCHIP architecture provides more speed and power for greater productivity
- 1.5GB RAM and 80GB HDD
- Dedicated dual processor design
- Mail Box: local archival solution
- Remote UI device management



Advanced Finishing Options

Two types of finishers

- Corner, double, saddle-stitched stapling
- Extensive stacking capacity up to 4,000 sheets

Hole-punching

- Two or three holes

Finisher-AC1



Saddle-Finisher-AC2



Puncher Unit-M1



Superior Paper Handling

- Up to 7,700-sheet paper capacity
- 100-sheet Bypass Tray
- Up to 140 lb. Index media weights
- Up to 13" x 19" media sizes from cassette and bypass



Accessibility Options

- Universal Design
- Voice Guidance Kit
- Remote Operator Software Kit
- ADF Access Handle
- Braille Label Kit

ENHANCED OUTPUT FOR HIGH-VOLUME ENVIRONMENTS

POWERFUL SYSTEM ARCHITECTURE

The imageRUNNER C5068/C5058 models are powered by Canon's advanced imageCHIP (Concurrent Hyper Intelligent Platform) system architecture for fast multifunction processing and full concurrency. Its dual processor design, 1.5GB of RAM, and 80GB hard disk drive all provide the resources needed to handle the multitasking workflows of high-volume environments at rated speeds in black and white and color.

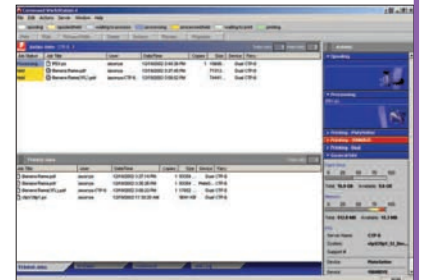
imageCHIP System Architecture



SUPERIOR PRINT PERFORMANCE

The imageRUNNER C5068/C5058 models can be configured with an optional print controller that enables the device to serve as a network printer. The embedded controller supports PCL 5c/6 and Canon's proprietary UFR II (Ultra Fast Rendering) language for exceptional printing performance, as well as an option for PostScript 3™ emulation. Through Canon's consistent driver architecture, users have powerful access to the many print and finishing features of the imageRUNNER C5068/C5058 models.

To manage more complex workflows, the imagePASS-G1 print server option provides support for genuine Adobe PostScript 3, PCL 5c, Command WorkStation®, and access to advanced options such as EFI® Impose and Secure Erase.



Command WorkStation

MAIL BOXES FOR DOCUMENT STORAGE

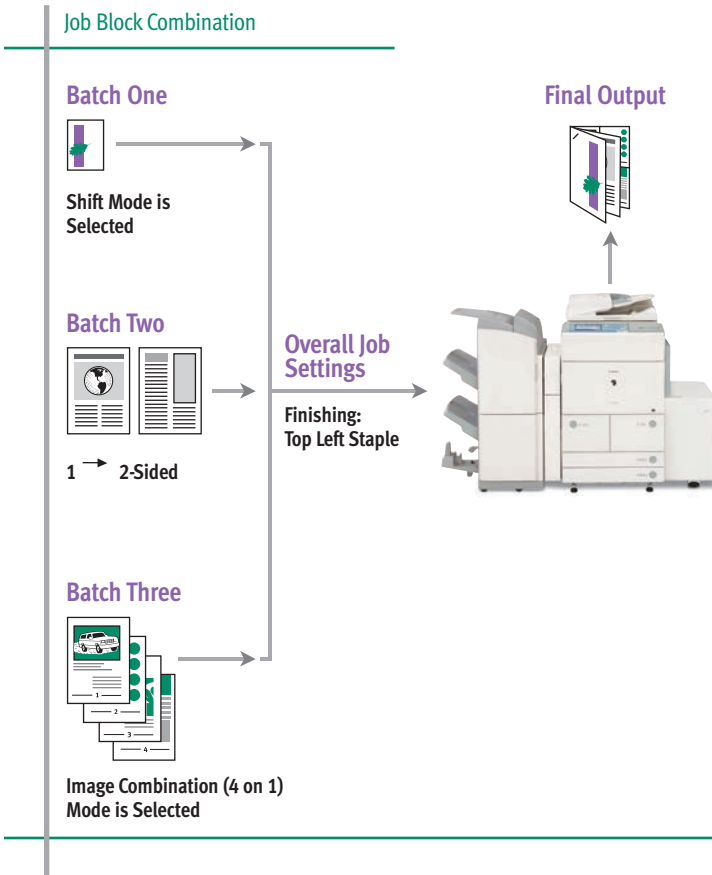
Streamline document storage tasks with the Mail Box feature—a great solution for frequent reprinting of forms and static documents. Personalize each Mail Box with a user name, password, and document deletion period. The new Copy and Store and Store and Print functions streamline workflows by combining multiple tasks and ensure that a digital original is automatically archived.



Mail Box Screen

MORE EFFICIENT WORKFLOW

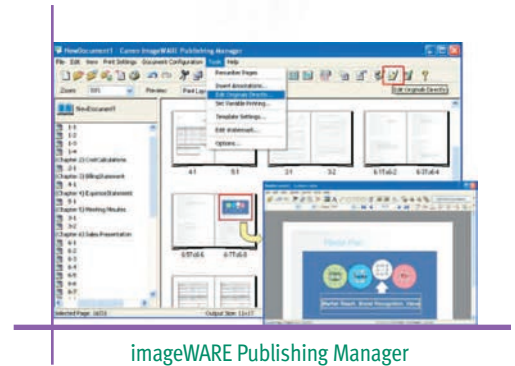
To produce complex documents, save time with powerful tools that make manual collation a burden of the past. The Job Block Combination feature enables you to combine different sets of documents into one on the device's control panel, insert tabs, and define settings such as paper type, finishing, and more. Completed documents can be printed immediately and stored in a Mail Box for later use. When you need to produce documents in black and white or with a little color, Auto Color Select mode intelligently distinguishes only the parts that require it on each page.



PROFESSIONAL DOCUMENT PRODUCTION FROM THE DESKTOP

Canon's imageWARE Publishing Manager software solution option provides powerful desktop tools to produce professional-looking documents through a simple drag-and-drop interface. Reports, booklets, brochures, tabs, catalogs, and more can be created with ease from predefined samples or user-defined templates. These files—or those from other sources, including databases, Microsoft® Word, Excel, PowerPoint®, Web pages, or spreadsheets—can be imported, too. A number of editing, annotating, stamping, endorsing, watermarking, and imposition tools are also available for further customization. In addition, many imported documents can be edited natively by utilizing Content Editor.

Once your document is complete, the professional finishing options of the imageRUNNER C5068/C5058 models can automatically insert tabs, collate, staple, two- or three-hole-punch, or saddle-stitch up to 15 pages of 12" x 18"* paper.



* Not available on imagePASS-G1 v1.1

FLEXIBLE COMMUNICATION AND DOCUMENT MANAGEMENT

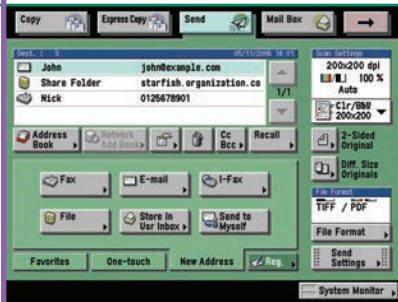
COLOR UNIVERSAL SEND

Canon's proprietary Color Universal Send technology is standard on the imageRUNNER C5068/C5058 models, enabling you to distribute scanned documents to multiple network destinations—e-mail and Internet fax addresses, local Mail Boxes, fax, network folders, and WebDAV servers—in one simple operation. Quickly and easily send documents to user addresses in a local Address Book, look up users from multiple LDAP servers on your network, or manually enter a destination. When Single Sign-On (SSO) or Simple Device Log-in (SDL) authentication modes are used, a new time-saving feature enables you to send documents to yourself in a single click.

Universal Send



Universal Send Main Screen



PDF ADVANCED FEATURE SET

The PDF Advanced Feature Set offers three powerful options to master the creation, distribution, and archiving of your documents. Canon's proprietary PDF High Compression Mode can significantly shrink the size of PDF files to send color documents faster, and the Trace & Smooth PDF feature can convert text, line art, and graphics in scanned documents to scalable artwork (vector graphics data) in PDF format.* The vector graphics are less jagged at the edges and can then be manipulated in Adobe Illustrator® to create elements for other documents. After scanning for PDF creation, Searchable PDF Mode embeds the text within the file to enable extraction or keyword searches.

PDF High Compression Mode

FILE SIZE COMPARISON

Original: Letter-Sized Hard Copy (Color Graphics with Text)



Canon's PDF (Compact)
300-dpi Color Scan
File Size: **150 KB**

PDF File Format
300-dpi Color Scan
File Size: **2 MB**

PDF File Format
300-dpi B/W Scan
File Size: **390 KB**



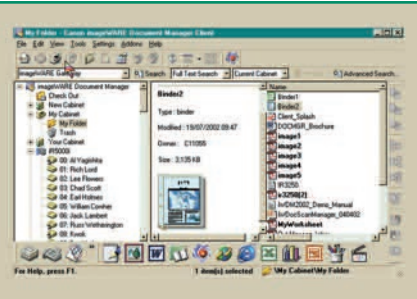
Trace & Smooth PDF

* Results may vary

DOCUMENT MANAGEMENT AND ARCHIVAL

The imageRUNNER C5068/C5058 models are designed to work seamlessly with Canon's imageWARE Document Manager software as a total document management solution. From the desktop, you can capture documents stored in a Mail Box on the device or auto-route the documents from Universal Send. For archiving your critical business documents and records, imageWARE Document Manager Workgroup and Enterprise editions can securely and efficiently store vast amounts of information in a centralized electronic repository.

imageWARE Document Manager



MAXIMIZE THE POWER OF THE WEB

With the industry's first Web Access Software option, you can browse the Web or corporate intranets directly from the device's color touch-panel. The Web Access function enables you to print Web pages or PDF files from the Internet or your network, even when you don't have access to a computer.*



Web Access Software

MEET UNIQUE WORKFLOWS

Canon MEAP architecture, which is based on Java technology, allows the system to incorporate unique applications that run embedded within the device. The result is total integration with your existing infrastructure by presenting customized applications to walk-up users directly from the color LCD panel of the imageRUNNER C5068/C5058 models.

* Requires Web Access Software-E1 and UFR II/PCL Printer Kit-Z1 options to print Web pages; requires PS Printer Kit-Z1 to print PDF files

POWERFUL ADMINISTRATION AND SECURITY

Device Management...

The imageRUNNER C5068/C5058 models include features that control user access and privileges to the device such as color output, as well as the ability to facilitate the management of one or many devices throughout your enterprise. The imageRUNNER C5068/C5058 models also offer features to help you guard against unauthorized access to the device and its data.

FLEXIBLE USER AUTHENTICATION

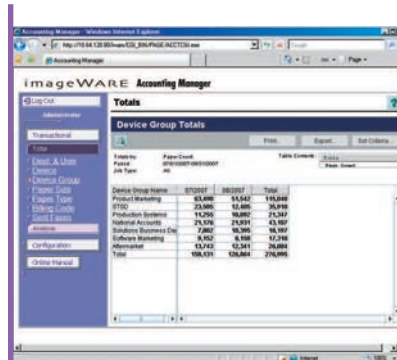
Administrators have a choice of methods to control access and privileges to the imageRUNNER C5068/C5058 models, including Single Sign-On (SSO) using network accounts, Simple Device Log-In (SDL), and Department ID Mode with the option to add a Control Card/Card Reader system.

ACCESS MANAGEMENT SYSTEM

Using the Access Management System option, administrators have powerful control over access to the device for greater security. Roles can be defined at both the user- and group-level, which define the functions and features that each person can use, including access to color output.

TRACK AND ANALYZE DEVICE USAGE ALONG WITH EASY CHARGE-BACK FUNCTIONALITY

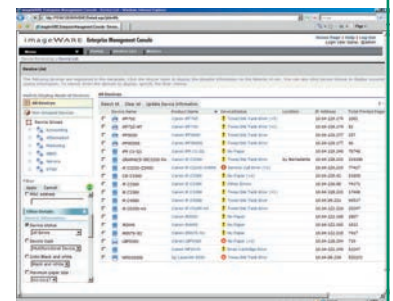
Canon imageWARE Accounting Manager provides administrators with the ability to download device workload statistics and generate usage reports by individual, group, device, or department. This information serves an important role in establishing strategies for effective resource allocation, such as monitoring the level of color usage to control costs. Bundled with imageWARE Accounting Manager is the Billing Code Plug-in (MEAP) which allows for a simple and efficient way to enter billing codes from the copier LCD.



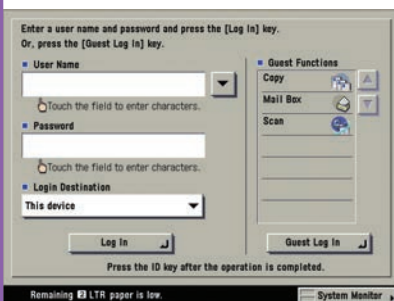
imageWARE Accounting Manager

CENTRALIZED DEVICE ADMINISTRATION

Canon's imageWARE Enterprise Management Console (EMC) is a Web-based utility that facilitates centralized management of networked devices. Built upon an extensible framework, it enables remote management of device settings, discovery of new devices using automated tasks, and device error notifications via e-mail. Administrators can also easily replicate settings and Address Books across multiple devices through the Device Information Delivery Function (DIDF), as well as push-print drivers to PC-based desktop computers for rapid deployment and automatically retrieve device counters.



imageWARE Enterprise Management Console



Access Management System Log-in

...and Security

DOCUMENT SECURITY

The PDF Security Feature Set option helps prevent impersonation or interception of your documents. Digital Device Signature mode and optional Digital User Signature mode provide verification of a document's source. You can also password-protect your documents with the Encrypted PDF feature, and securely print them over the network using the Encrypted Secured Print feature.



Digital User Signature PDF

DOCUMENT SECURITY

- Encrypted Secured Print
- Watermark/Secure Watermark
- Copy Set Numbering
- Encrypted PDF
- Digital Signature PDF
- FAX Forwarding
- FAX Destination Confirmation



MAIL SERVER SECURITY

- POP Authentication before SMTP
- SMTP Authentication



NETWORK SECURITY

- MAC Address Filtering
- IP Address Filtering
- SSL Encryption
- Network Application On/Off
- USB Block
- Destination Restriction



DEVICE ACCESS SECURITY

- Department ID (up to 1000 IDs)
- User Authentication (SDL/SSO)
- Access Management System
- Control Card/Card Reader System
- Smart Card Authentication



HDD SECURITY

- HDD Data Erase
- HDD Data Encryption
- HDD Format
- Mail Box Password Protection
- Job Log Conceal

DEVICE MANAGEMENT

- DIDF (Device Information Delivery Function)
- Key Switch Unit

Device Management and Security Overview



Encrypted Secured Print Screen

DEVICE ACCESS

Beyond user-level authentication, the imageRUNNER C5068/C5058 models can also restrict access from the network to specific IP/MAC addresses and service ports. Enhanced network infrastructure management is also achieved through support for IPv6.

DATA SECURITY

To help protect your stored, scanned, and printed data, the HDD Data Erase option permanently removes deleted files by overwriting them up to three times. The HDD Data Encryption option provides additional security by encrypting data before it's written to the hard disk drive and has achieved Common Criteria (CC) certification.

REMARKABLY ACCESSIBLE AND EASY TO USE

EASE-OF-USE

For users, the imageRUNNER C5068/C5058 models facilitate operations with an easy-to-read, full-color touch panel, interactive help menus, insightful documentation and tutorials, and remote operation capabilities. From across the network, users can use the Remote UI (User Interface) utility to check the status of the device, track the progress of current jobs, monitor paper and toner levels, administer the Mail Box, and edit the Address Book.



Color LCD Control Panel

SUPPORT TOOLS FOR OPERATORS

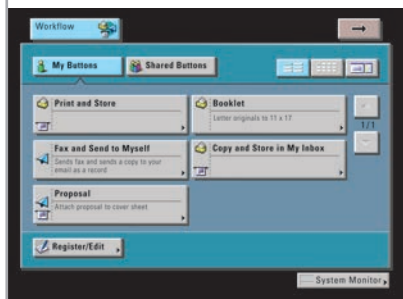
Whether you're a beginner or an advanced user, the Canon imageRUNNER C5068/C5058 models are easy to navigate. An Easy Operation Guide provides step-by-step instructions on how to operate the device's main functions. And the [Help] hard key on the device provides instructions and explanations for operation. Instead of bulky manuals, device documentation is CD-based and features search tools to find answers quickly and easily. User tutorials in Macromedia Flash format are also available and can be distributed through your network or corporate intranet for smooth deployment.



Easy Operation Guide and Tutorial CD

ACHIEVE OPERATIONAL EFFICIENCY

Breeze through complex tasks and help to reduce operator mistakes using the new Workflow Composer option. This enables users to configure one button to perform multiple actions, such as copying, sending, and storing at the device in a single step. For even greater convenience, workflow buttons can also be created and edited from the desktop.



Workflow Composer Screen

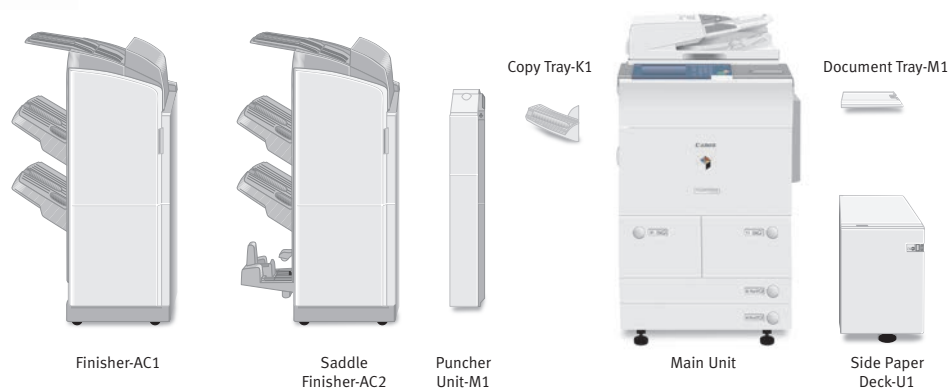
ACCESSIBILITY OPTIONS

Canon offers a number of options to ensure easy access for every authorized user. Users have access to all system functions from a laptop or desktop PC using the Remote Operator Software Kit option to emulate the device control panel on a computer monitor. Users with visual impairments can receive audible confirmation of select copy functions with the Voice Guidance Kit. The Braille Label option improves access to copy and print functions by adding transparent labels to hard keys on the device, and the ADF Access Handle option helps seated users easily open the document feeder.



Voice Guidance Kit

SPECIFICATIONS



MAIN UNIT

Type:	Color Digital Multifunction Imaging System
Imaging System	
Copying Method:	Laser Dry Electrostatic Transfer
Developing System:	Dry Monocomponent/Dual Component Developing System
Memory	
Standard:	1.5GB RAM
Hard Disk Drive:	80GB
Network Interface	
Connections:	10/100Base-TX (RJ-45)
Other Interface:	USB 2.0 (Device), USB 2.0 (Host)
First-copy Time:	5.3 Seconds (B/W) 12.2 Seconds (Color)
Warm-up Time:	8 Minutes and 50 Seconds after Powering On
Copy/Print Speed (B/W, Color):	C5068: Up to 68/16 ppm (Letter) C5058: Up to 58/16 ppm (Letter)
Copy/Scan Resolution:	600 dpi x 600 dpi
Print Resolution:	2400 dpi x 600 dpi Interpolated
Engine Resolution:	600 dpi x 600 dpi
Halftone:	256 Gradations (Continuous-Tone)
Paper Sources	
Standard:	Dual 1,500-sheet Paper Drawers Dual 550-sheet Paper Cassettes 100-sheet Stack Bypass
Optional:	3,500-sheet Paper Deck
Paper Sizes	
Upper Drawers:	Letter
Lower Cassettes:	13" x 19", 12" x 18", 11" x 17", Legal, Letter, Letter-R, Statement-R, Executive
Bypass:	13" x 19", 12-5/8" x 17-11/16", 12" x 18", 11" x 17", Legal, Letter, Letter-R, Statement-R, Executive, Irregular size (3-15/16" x 5-7/8" to 13" x 19")
Acceptable Paper Weight	
Drawers:	17 lb. Bond to 110 lb. Index
Bypass:	17 lb. Bond to 140 lb. Index
Duplexing:	Standard Automatic Trayless Duplexing (STMT-R to 12" x 18")
Image Reader:	Color Image Reader (Standard)
Acceptable Originals:	Sheet, Book, 3-dimensional Objects (up to 4.4 lb.)
Max. Original Size:	11" x 17"
Document Feeding Method:	Duplexing Automatic Document Feeder (Standard)
Acceptable Originals:	Statement to 11" x 17"
Paper Capacity:	100 Sheets

Acceptable Paper Weight of Originals:	Simplex: 13 lb. to 32 lb. Bond Duplex: 17 lb. to 32 lb. Bond
Scan Speed:	Up to 70 ipm at 300 dpi (LTR in B/W and Color) Up to 50 ipm at 600 dpi (LTR in B/W and Color)
Dimensions (H x W x D):	46-7/8" x 26-3/4" x 33-1/2"
Weight:	Approx. 498 lb.
Power Requirements:	120V AC, 60Hz, 16A
Power Consumption:	1.75 kW
Plug:	NEMA 5-20P
Toner (Estimated Yield):	Black: 40,000 Images at 6% Coverage Color: 9,500 Images at 5% Coverage

Copy Features

Multiple Copies:	1 to 9,999
Max. Copy Reservation:	10 Jobs
Color Mode:	Auto Color, Full Color, Black, Single Color, Two Colors
Copy Exposure:	Automatic or Manual (9 Levels) Magnification

Magnification

Preset Reduction:	25% - 400% (1% Increments) 25%, 50%, 64%, 73%, 78%
Preset Enlargement:	121%, 129%, 200%, 400%
Zoom Mode:	25% - 400% (1% Increments)

Mail Box Features

Max. Mail Boxes Supported:	100 User Inboxes, 1 Memory RX Inbox, 50 Confidential Fax Inboxes
----------------------------	--

Scan Feature

Network TWAIN Scan:	Standard
Network Scan Utility:	Color Network ScanGear

Color Universal Send (Standard)

Color Mode:	Auto Color Select (Full Color, Grayscale) Auto Color Select (Full Color, B/W) Full Color, Grayscale, B/W
Address Book Capacity:	Max. 1,800 Destinations (Includes 200 One-Touch Buttons) Max. 5 LDAP Servers
Sending Methods:	E-Mail, I-FAX, SMB, File Server (FTP, IPX, WebDAV), User Inbox, Super G3 Fax (Opt.)
Communication Protocol	
File:	FTP (TCP/IP), SMB (TCP/IP), NCP (IPX), WebDAV
E-mail/I-fax:	SMTP, POP3, I-FAX (Simple, Full)

Data Format	
File, E-mail:	TIFF, JPEG, PDF, PDF (Compact),* PDF (Trace & Smooth),* PDF (OCR),* Encrypted PDF,** Digital Signature PDF (Device,** User***)
I-fax:	B/W: TIFF (MH, MR, MMR) Color: TIFF (Profile-C)

OPTIONAL ACCESSORIES

Super G3 Fax Board-U1

Applicable Line:	Public Switched Telephone Network (PSTN)
Connection Lines:	One-Line (Super G3 Fax Board-U1)
Sending/Original Size:	Statement to 11" x 17"
Recording/Printing Size:	Statement to 11" x 17"

Color UFR II/PCL Printer Kit-Z1

CPU:	Canon Dual Custom Processor (Shared)
Memory:	1.5GB RAM (Std.) (Shared)
Hard Disk Drive:	80GB (Shared)
Supported PDL:	UFR II/PCL 5c/PCL 6
Optional PDL Support:	PostScript 3 Emulation (PS Printer Kit-Z1)
Printer Drivers	
UFR II:	Windows® (Windows 2000/XP/Server 2003/Windows Vista®), Citrix MetaFrame, Macintosh® (OS 10.2.8 or Later)
PCL 5c:	Windows (Windows 2000/XP/Server 2003/Windows Vista) Citrix MetaFrame
PCL 6:	Windows (Windows 2000/XP/Server 2003/Windows Vista) Citrix Metaframe
XPS: ⁿ	Windows Vista
PS3 (Optional):	Windows (Windows 2000/XP/Server 2003/Windows Vista) Citrix MetaFrame, Macintosh (OS 10.2.8 or Later)

imagePASS-G1 v1.1

Connectable Device:	imageRUNNER C5068/C5058
CPU:	Celeron® M 1.2GHz
System:	System 7e
Memory:	256MB (Std.), 512MB (Max.)
Hard Disk Drive:	80GB
Interfaces (to LAN):	10/100/1000Base-T (RJ-45)
Supported PDL:	Adobe Postscript 3, PCL 5c
Utility Software:	Remote Scan/Command WorkStation for Windows/Command WorkStation for Mac
Options:	256MB RAM, Secure Erase v1.0, Impose v2.6, X-Rite Eye-One

(Specifications are continued on back cover.)

Paper Deck-U1

Paper Size:	Letter
Paper Deck Capacity:	3,500 Sheets (20 lb. Bond)
Dimensions (H x W x D):	22-3/8" x 12-7/8" x 23"

Finisher-AC1/Saddle Finisher-AC2

Number of Trays:	3 Trays
Paper Size	
Standard:	13" x 19", 12" x 18", 11" x 17", Legal, Letter, Letter-R, Statement-R, Executive
Non-standard Size:	Irregular Size (3-15/16" x 5-7/8" to 13" x 19")
Paper Weight:	17 lb. Bond to 140 lb. Index
Paper Capacity Per Tray	
Non-collating Tray:	250 Sheets (Letter, Statement-R, Executive) 125 Sheets (13" x 19", 12" x 18", 11" x 17", Legal, Letter-R)
Upper Tray:	1,300 Sheets (Letter, Statement-R, Executive) 650 Sheets (13" x 19", 12" x 18", 11" x 17", Legal, Letter-R)
Lower Tray:	2,450 Sheets (Letter) 650 Sheets (13" x 19", 12" x 18", 11" x 17", Legal, Letter-R)
Paper Capacity of Staple Mode	
Upper Tray:	1,300 Sheets/100 Sets (Letter, Executive)
Lower Tray:	650 Sheets /50 Sets (11" x 17", Legal, Letter-R)
Max. Stapling Capacity	
Letter, Executive:	50 Sheets (17 lb. to 20 lb. Bond) 30 Sheets (20 lb. to 28 lb. Bond) 2 Sheets (28 lb. Bond to 140 lb. Index)

11" x 17", Legal, Letter-R:	30 Sheets (17 lb. to 20 lb. Bond) 20 Sheets (20 lb. to 28 lb. Bond) 2 Sheets (28 lb. Bond to 140 lb. Index)
Staple Mode:	Corner: 11" x 17", Legal, Letter, Letter-R, Executive Double: 11" x 17", Legal, [†] Letter, Letter-R, [†] Executive
Saddle-Stitching**	
Acceptable Paper Sizes:	12" x 18", [†] 11" x 17", Legal, Letter-R
Saddle-stitch Capacity:	15 Sheets (17 lb. to 20 lb. Bond) 10 Sheets (20 lb. to 28 lb. Bond)
Tray Capacity:	25 Sets (1 to 5 Sheets) 15 Sets (6 to 10 Sheets) 10 Sets (11 to 15 Sheets)
Folding:	V-Fold
Dimensions (H x W x D)	
Finisher-AC1:	46-1/4" x 26-1/4" x 25-7/8"
Saddle Finisher-AC2:	46-3/4" x 26-1/4" x 25-7/8"

Puncher Unit-M1***

Paper Size:	11" x 17", Legal, Letter, Letter-R
Max. Paper Weight:	17 lb. Bond to 140 lb. Index
Punch Type:	3 Holes (Letter, 11" x 17") 2 Holes (Legal, Letter-R)
Punch Waste Tray Capacity:	When approximately 3,000 Sheets of Paper Have Been Punched
Dimensions (H x W x D):	32-3/4" x 4-1/4" x 24-1/2"

Other Optional Accessories

- Encrypted Secured Print Software-C1[•]
- Barcode Printing Kit-A1
- Web Access Software Kit-E1^{••}
- Universal Send PDF Advanced Feature Set-A1
- Universal Send PDF Security Feature Set-A1
- Digital User Signature PDF Kit-A1
- Secure Watermark-A1

- Super G3 Fax Board-U1
- HDD Data Encryption Kit-B1
- HDD Data Erase Kit-A1
- Voice Guidance Kit-A2[•]
- Remote Operator Software Kit-A2
- Document Tray-M1[•]
- Copy Tray-K1^{•••}
- Card Reader-C1[•]
- Card Reader Attachment Kit-C1
- Key Switch Unit-A2
- Braille Label Kit-A1
- ADF Access Handle-A1
- Stamp Unit-B1
- eCopy Suite
- imageWARE Suite
- Access Management System Kit-A1
- Workflow Composer-B2

Footnotes:

- * Requires Universal Send PDF Advanced Feature Set-A1
- ** Requires Universal Send PDF Security Feature Set-A1
- *** Requires Digital User Signature PDF Kit-A1
- [•] Check with Authorized Canon Dealer for availability
- [†] Not available on imagePASS-G1 v1.1
- ^{••} Available with Saddle Finisher-AC2 only
- ^{•••} Can only be installed with Finisher-AC1 or Saddle Finisher-AC2
- [•] Requires UFR II/PCL Printer Kit-Z1
- ^{••} Requires UFR II/PCL Printer Kit-Z1 if printing Web pages; requires PS-Printer Kit-Z1 if printing PDF files
- [•] Voice Guidance Kit-A2 cannot be installed with Document Tray-M1
- ^{•••} Cannot be installed if any optional finishers are installed
- Requires Card Reader Attachment Kit-C1 for installation

Canon
image*ANYWARE*

Adobe, PostScript, and Illustrator are registered trademarks or trademarks of Adobe Systems Incorporated in the United States and/or other countries. EFI and Command WorkStation are registered trademarks of Electronics for Imaging, Inc. in the U.S. Patent and Trademark Office and/or certain other foreign jurisdictions. Microsoft, Windows, Windows Vista, and PowerPoint are registered trademarks of Microsoft Corporation in the United States and/or other countries. Celeron is a trademark or registered trademark of Intel Corporation or its subsidiaries in the United States and/or other countries. CANON, IMAGERUNNER, MEAP, and the GENUINE logo are registered trademarks of Canon Inc. in the United States and may also be registered trademarks or trademarks in other countries. IMAGEWARE is a registered trademark of Canon U.S.A., Inc. in the United States and is a trademark of Canon Inc. in certain other countries. IMAGEANYWARE is a trademark of Canon. All referenced product names and other marks are trademarks of their respective owners. Specifications and availability subject to change without notice. ©2009 Canon U.S.A., Inc. All rights reserved.

Federal Law prohibits copying of certain documents. Violators may be subject to penalties. We suggest that you check with your own legal counsel. Canon U.S.A., Inc. and Canon Canada, Inc. intend to cooperate with Law Enforcement Agencies in connection with claims of unauthorized copying.



1-800-OK-CANON
www.usa.canon.com

Canon U.S.A., Inc.
One Canon Plaza
Lake Success, NY 11042

