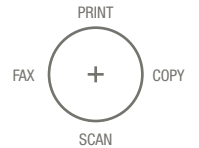




KONICA MINOLTA

## FOR HIGHER VALUE, TURN UP THE VOLUME.

For high-speed, high-volume productivity, the Konica Minolta bizhub 500 leads the way in value. It's a fast, powerful, flexible B&W solution for workhorse output to keep costs down and information flowing. It's also a central document resource that puts you at the hub of your business – scanning and sharing, printing and copying, networking and communicating with seamless ease and enhanced security. And it gives you modular, cost-effective options for booklet-making, stapling and hole-punching, even Super G3 fax for all-in-one performance. If the bizhub 500 sounds good now, wait until it goes to work on your workflow!



**bizhub 500**

**DO BUSINESS BETTER**

**50**  
PPM

**CONNECT\_**

**COMMUNICATE\_**

**CONTROL\_**

## **bizhub 500**

- ▶ POWERFUL 50 PPM B&W OUTPUT
- ▶ HIGH-VOLUME 175,000 PAGE MONTHLY DUTY CYCLE
- ▶ BIZHUB OP FOR MULTIFUNCTIONAL PRODUCTIVITY
- ▶ SIMITRI® POLYMERIZED TONER FOR MORE FINE DETAIL
- ▶ RAPID SCANNING – UP TO 70 ORIGINALS PER MINUTE
- ▶ PUSH SCANNING TO MULTIPLE DESTINATIONS
- ▶ SCAN-TO-EMAIL, HDD, FTP, PC (SMB)
- ▶ BOX FUNCTION WITH PASSWORD PROTECTION
- ▶ SIMPLE OPERATION, TILTING CONTROL PANEL



**bizhub 500**

\_PRINTER  
\_COPIER  
\_SCANNER  
\_FAX



**The essentials of imaging**

## KONICA MINOLTA bizhub 500

High-volume 50 ppm print/copy output. With fast output and flexible auto finishing options, the bizhub 500 is an ideal high-volume document delivery system for human resource documents, legal and healthcare reports, corporate presentations, financial data, training programs and more.

**Robust design for higher productivity.** To keep in-house document output flowing, the bizhub 500 is ruggedly built for a robust monthly duty cycle of up to 175,000 pages.

**Simple operation, superior copies.** Even in high-volume applications, the bizhub 500 provides simple controls and menus to make operation simple even for first-time users – with special features like 1200 dpi equivalent copy and print resolution, so every document can look more professional.

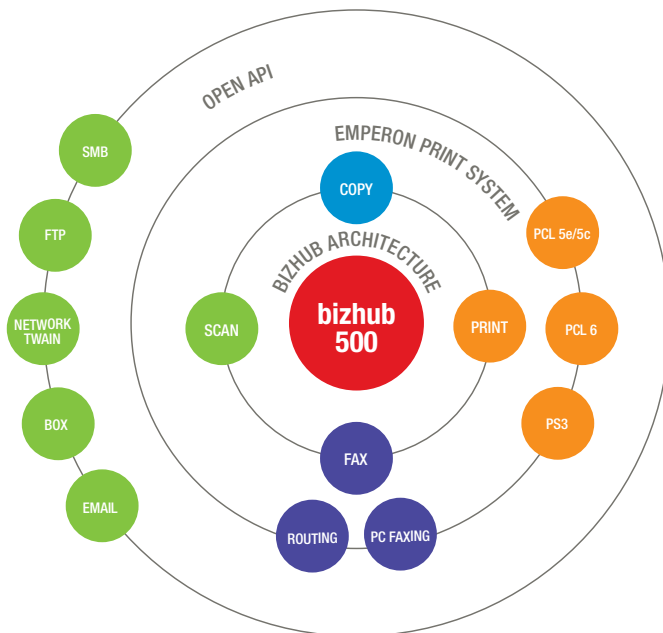
IC-204 Print Controller option driven by the Emperon™ Print System, for powerful control of PCL 5e/PCL 6 and PostScript 3 emulation printing and finishing through a user-friendly interface.

**User Box & security features.** You can store, share and access documents to individual user boxes with industry-leading functionality (Save/Print/Route/Move/Copy) – plus password protection, user authentication, account track and security enhancements (including pending ISO 15408 Certification).\*

**All-in-one functionality with optional Super G3 Fax.** Add a simple fax option to your bizhub 500, and one document resource can handle all your traffic with seamless productivity so you can eliminate redundant equipment.

**3-way tilting control panel.** Large function keys and simple touch-screen command interface provide comfortable, intuitive operation – and tilting design allows wheelchair access.

**THE POWER OF BIZHUB™ OP.** THREE ADVANTAGES IMPROVE MULTIFUNCTIONAL PERFORMANCE – BIZHUB ARCHITECTURE TO RUN ALL FUNCTIONS ON ONE CPU AND MEMORY SUBSYSTEM, THE EMPERON™ PRINT SYSTEM FOR INTEGRATED PRINT/SCAN OUTPUT WITH SIMPLE USER INTERFACE, AND BIZHUB OPEN API FOR CUSTOM INTEGRATION WITH FUTURE THIRD-PARTY SOFTWARE.



**SIMITRI® POLYMERIZED TONER.** THE EXCLUSIVE KONICA MINOLTA TONER FORMULATION WITH FINER PARTICLES TO SHARPEN EDGE DETAIL, MAKE TEXT MORE LEGIBLE AND INCREASE HALFTONE DEFINITION.

SIMITRI®



PULVERIZED

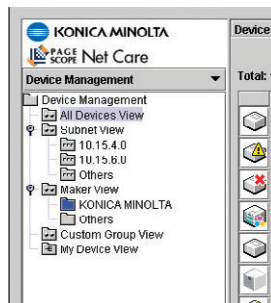


### FINISHING OPTIONS



- ▶ LEFT TOP STAPLING
- ▶ STAPLING (2-POSITION)
- ▶ 2/3-HOLE PUNCHING
- ▶ BOOKLET MAKING

**PRODUCTION-QUALITY FINISHING OPTIONS.** PRINT IN-HOUSE AND ON-DEMAND, WITH MODULAR OPTIONS FOR 60-PAGE SADDLE-STITCH BOOKLET-MAKING, 50-SHEET STAPLING, AND 2/3-HOLE PUNCHING.\*



**THE POWER OF PAGESCOPE™ SOFTWARE.** SPEED WORKFLOW THROUGHOUT YOUR ORGANIZATION WITH A TOTAL SUITE OF SOLUTIONS, INCLUDING PAGESCOPE WEB CONNECTION FOR DEVICE MANAGEMENT AND LDAP ADDRESSING, PAGESCOPE NET CARE FOR MANAGING MULTIPLE DEVICES FROM A SINGLE POINT, PAGESCOPE DATA ADMINISTRATOR™ FOR ENHANCED ADDRESSING AND SECURITY FUNCTIONS, AND PAGESCOPE WORKWARE™ FOR PERSONAL DOCUMENT MANAGEMENT.\*

**5,650-SHEET MAXIMUM PAPER CAPACITY.** THE BIZHUB 500 LETS YOU WORK LONGER WITHOUT RE-LOADING PAPER, LOAD UP TO 110 LB. INDEX STOCK FROM BYPASS AND COPY, SCAN OR DUPLEX ORIGINALS UP TO 11" X 17" IN SIZE.



**bizhub**



Office imagery courtesy of Knoll, Inc.

© 2006 KONICA MINOLTA BUSINESS SOLUTIONS U.S.A., INC. All rights reserved. Reproduction in whole or in part without written permission is prohibited. Konica Minolta and The essentials of imaging are trademarks of KONICA MINOLTA HOLDINGS, INC. bizhub, Emperon, and PageScope are trademarks of KONICA MINOLTA BUSINESS TECHNOLOGIES, INC. Simitri is a registered trademark of KONICA MINOLTA BUSINESS SOLUTIONS. All other brands and product names are registered trademarks or trademarks of their respective owners.

Design and specifications are subject to change without notice.

\*Some functions may require options, which may or may not be available at time of launch.



**KONICA MINOLTA**

KONICA MINOLTA  
BUSINESS SOLUTIONS U.S.A., INC.  
100 Williams Drive  
Ramsey, NJ 07446

[www.kmbs.konicaminolta.us](http://www.kmbs.konicaminolta.us)  
[www.konicaminolta.us/solutions](http://www.konicaminolta.us/solutions)