



KONICA MINOLTA

The essentials of imaging



bizhub PRO C5500

Dependable colour and productivity



bizhub PRO 

Production system bizhub PRO C5500

bizhub PRO C5500, production system



More than just flexible colour production

CRDs and print providers need to react quickly and flexibly to their customers' varied requirements. To satisfy even the most discerning demands these user groups look for a superior image quality and a fast production speed in both colour and black & white as well as a competitive cost/performance ratio that will protect their margins. With the bizhub PRO C5500 Konica Minolta has introduced a digital colour production system that meets all these challenges.

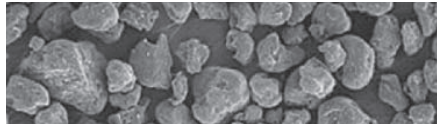
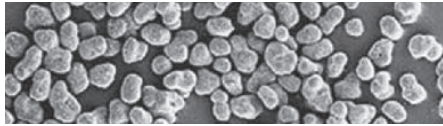
- The bizhub PRO C5500 delivers identical fast 55 colour and b/w prints per minute. Featuring Konica Minolta's advanced colour processing technology, this colour production machine was designed specifically to answer the essential requirements of CRDs and print providers with regard to quality, reliability, ease of use and economy.
- In the bizhub PRO C5500 extensive media flexibility combines with various in-line finishing capabilities, making light work of the production of the most diverse materials. Its sturdy, metal construction ensures absolute dependability while the compact design facilitates its integration in locations where space is limited.
- Convenient operation and ease of use are other attributes that were important development criteria. Additionally, the bizhub PRO C5500 excels with a remarkable registration accuracy which ensures perfect results in duplex printing, including brochures and booklets.
- Konica Minolta's CS Remote Care concept makes unplanned stand-stills a thing of the past for the bizhub PRO C5500. And its low overall running costs will surprise even those operating on a tight budget.

The bizhub PRO C5500 offers a lot more than high-speed colour production. Reaping the benefits of superior quality in combination with absolute reliability, print providers simply won't go wrong choosing Konica Minolta's dependable digital colour press.

bizhub PRO C5500 

Simitri HD® polymerised toner

Conventional toner



Tomorrow's colour technology for today



Dependability is a fundamental issue for print providers and CRDs. When deadlines are tight and production times are squeezed, the faultless performance of all equipment is essential. With this in mind Konica Minolta integrated advanced technology into the bizhub PRO C5500, promising to not just keep things running but taking reliability to encompass an exceptional image quality as well as highest productivity.

→ Unique colour processing technology

Konica Minolta's advanced colour processing technology is an integral part of the bizhub PRO C5500. S.E.A.D. stands for „Screen-Enhancing Active Digital Process“ and makes available a range of technical innovations that provide the bizhub PRO C5500's impressive colour reproduction capabilities at its high speed.

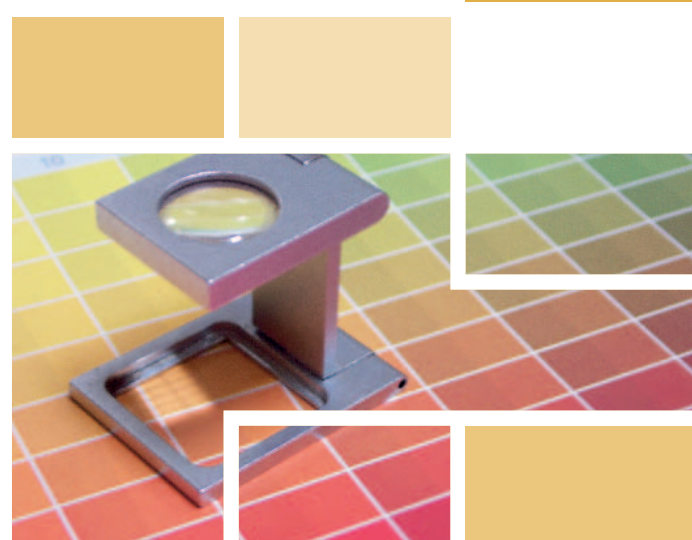
- The system's improved image quality with considerably smoother backgrounds is achieved with a newly applied unique screening method. Also new, Konica Minolta's ITbit (Image Tag bit) technology much enhances halftone printing, showing visible improvements in particular for outlines, reversed and slim text.
- To enhance the speed and ensure highest precision the bizhub PRO C5500 features an innovative dual-beam laser unit. Additionally it is equipped with three HI-PER ASICs (high-performance image processing application-specific integrated circuits). These little chips contain many of the proprietary Konica Minolta technologies essential for the outstanding system performance.

→ Simitri HD® polymerised toner


Konica Minolta's Simitri HD® (High Definition) polymerised toner takes image quality to new heights: Its minuscule but uniform particle size allows the precise reproduction of even the finest lines without sacrificing a perfect black density. Simitri HD® also ensures an unparalleled colour image quality and, due to a reduced fusing temperature, supports a truly impressive range of media.

→ Powerful Fiery controller

The internal Fiery controller (IC-408) delivers professional print results quickly and efficiently. Featuring EFI's highly efficient Fiery colour management system it supports users with an extensive standard range of utilities for varied applications.



Professional versatility and **true productivity**



With its unique combination of fast colour and b/w speed, extensive media flexibility, superior image quality and high durability the bizhub PRO C5500 helps reduce the pressure in busy print rooms. An impressive range of features and functionalities increases user convenience and facilitates the fast processing of jobs. Offering sustainable, reasonable running costs Konica Minolta's highly dependable colour production system ensures competitiveness for CRDs and print providers that strive to produce perfect, high-quality results but need to protect their margins.

➔ Compact and sturdy build

For a device in its class the bizhub PRO C5500 is very compact. This can be an advantage if the bizhub PRO C5500 is to be installed in a crowded print room or any other location where space is at a premium. Nevertheless its sturdy and robust construction ensures a continuous and absolutely dependable performance.

➔ Easy usability

One of the bizhub PRO C5500's many attractive assets is its high degree of user convenience. Fast and easy handling and no-nonsense operation were top development priorities for Konica Minolta's colour production system. User operation and programming for example are straightforward and intuitive via the large full-colour operator panel that provides clear and easy access to all functions.



→ Impressive media flexibility

Paper processing in the bizhub PRO C5500 is fast and ultra-smooth. Thanks to Konica Minolta's "air-assist" paper feeding technology its media flexibility is extensive and covers a wide range of substrates, incl. up to 300 gsm paper, coated paper, card and digital offset stock. With max. 4,250 pages input capacity the bizhub PRO C5500 easily handles long print runs and continuous production. Advanced features like mixplex and mixmedia guarantee professional results also for complex print jobs. Additionally the optional large-capacity paper magazine can be equipped with a heating unit (optional) that dries paper stock before it's used, again increasing the system's feeding reliability.

→ High monthly output

With the bizhub PRO C5500 short-run printing is fast and keeping short turnaround times easy! Its output capacity of up to 55 colour or b/w pages per minute and a productive paper and toner refill on-the-fly functionality make it ideal for heavy-duty production and perfectly suitable for monthly volumes of up to 40,000 pages.

→ Absolute precision

The bizhub PRO C5500's back-to-front and page-to-page registration ensures a degree of precision that comes very close to offset printing results. Thanks to these advanced capabilities the bizhub PRO C5500 excels in particular in the production of faultless booklets and brochures – but is of course just as suited to other complex jobs.

→ Complete reliability

Professional users must be able to fully rely on their equipment – the bizhub PRO C5500 does not let anyone down! And the machine's complete dependability is further enhanced with Konica Minolta's remote diagnostics system. Providing pro-active and highly flexible service support, CS Remote Care helps to keep output devices running smoothly, minimising interruptions and maximising system availability. All relevant system data are transmitted directly to the Konica Minolta service in an automated process that never needs user intervention.





In-line finishing for professionals

For a truly professional impression of the final print product a superior image quality is essential – but so are an exceptional media quality and the professional finishing of the printed output. Naturally Konica Minolta has ensured that the bizhub PRO C5500 also meets highest demands in this respect, offering a choice of sophisticated in-line finishing functions that further enhance its capabilities.

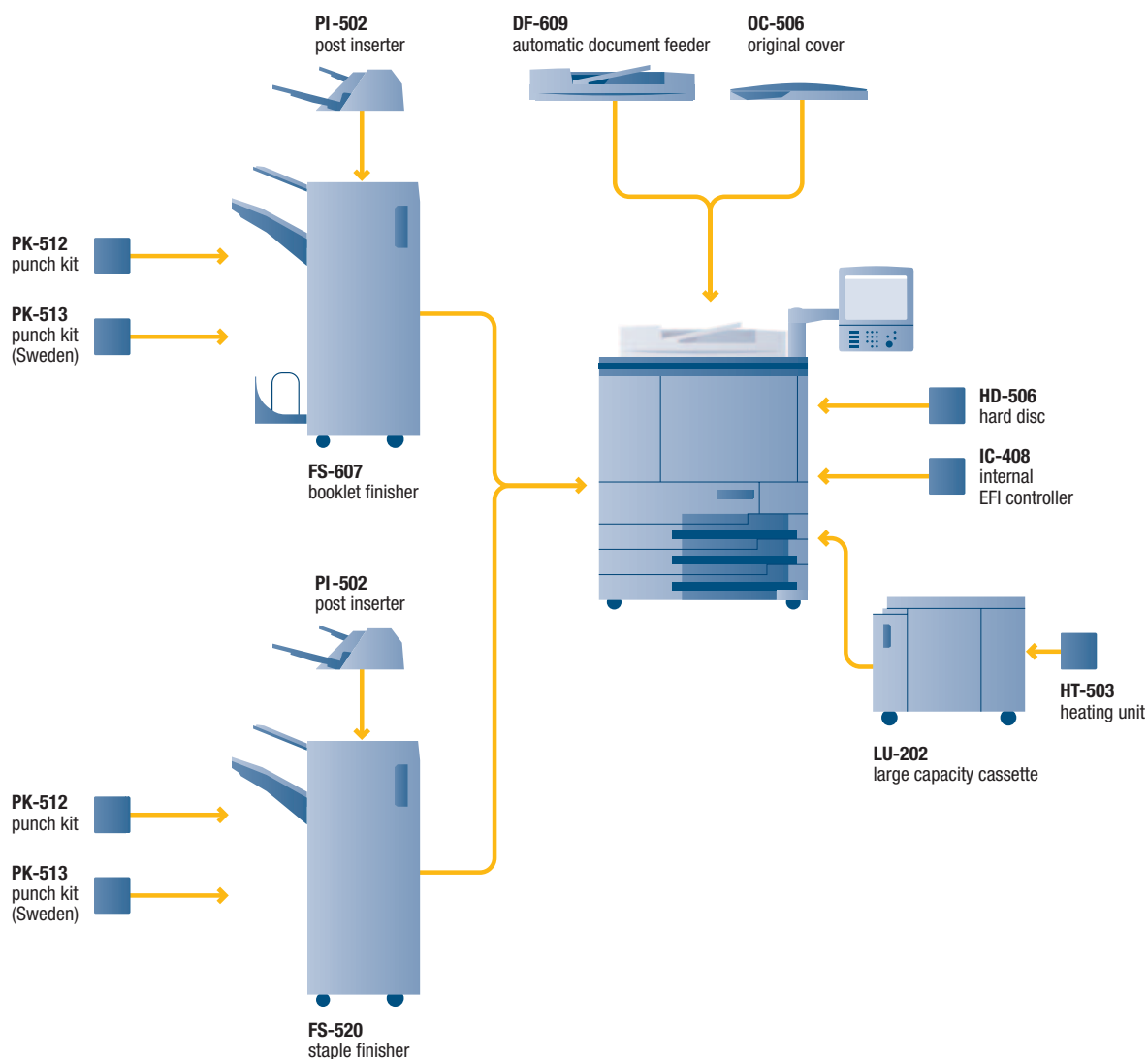
- The bizhub PRO C5500 can be upgraded with a booklet finisher to automate the production of booklets and brochures, including a highly convenient and very productive in-line half-fold and saddle-stitching functionality. Booklets can consist of up to 20 sheets, allowing a content of max. 80 pages.
- Both the booklet finisher and a staple finisher that's available as an alternative, provide multi-position stapling for up to 50 sheets per stapled set.

- A letter-folding function for sets of up to 3 sheets offers extra flexibility and is particularly attractive for the fully automatic production of mailings.
- In addition, in-line punching of 2 or 4 holes is available as an optional upgrade to the booklet and the staple finisher.
- With the help of a post inserter pre-printed covers can automatically be added to documents while these are printed on the bizhub PRO C5500. Available for both finishers, the post inserter option further enhances the scope of applications possible with Konica Minolta's dependable colour production system.

Upgraded with these comprehensive finishing features the bizhub PRO C5500 is perfectly suited to the production of diverse printed materials. Whether customers require booklets, brochures, manuals, reports, mailings or other documentation – with the bizhub PRO C5500 the print provider can offer instant, automated production for all.



Your options at a glance





KONICA MINOLTA

Simitri HD
High Definition Polymerised Toner



Technical specifications

Copier specifications

Copy speed
55 cpm (A4)
33 cpm (A3)

Copy resolution
600 x 600 dpi

1st copy/print
6.5 sec. (colour A4)

Gradations
256 gradations

Magnification
25–400% in 0,1% steps

Multiple copies
1–9,999, countdown, interruption mode

Copy memory
Standard: 4x 256 MB
Max.: shared with copier HDD

Copier HDD
4x 40 GB

Printer specifications

Print speed
55 ppm (A4)
33 ppm (A3)

Print resolution
Max.: 600 x 1,800 dpi

IC-408 (Internal EFI Fiery Controller)

Page description language
PostScript 3, PCL*, TIFF, PDF

Printer driver
Windows 2000/XP/Server 2003
Mac OS X

CPU
Intel Celeron 2.8 GHz

Interface
Ethernet (10/100/1000-Base-T)

Print memory
Standard: 512 MB

Printer HDD
80 GB

Scanner specifications

Scan speed
39 opm (A4)
22 opm (A3)

Scan resolution
600 x 600 dpi

Scan modes
TWAIN scan
Scan-to-eMail
Scan-to-FTP
Scan-to-SMB
Scan-to-HDD

Scan formats
TIFF (single and multipage), PDF

System specifications

Automatic document feeder
Up to 100 originals
35–210 gsm

Paper weight
64–256 gsm
Up to 300 gsm
(from bypass or LU-202)

Paper size
A5–A3+ (330 x 487 mm)

Maximum image area
318 x 480 mm

Duplex unit
Non-stack type
64–256 gsm

Paper input capacity
Standard: 4,250 sheets (with LU-202)

Paper feed unit:
1 magazine
Up to 2,500 sheets paper capacity
Up to 300 gsm

Paper output capacity
Main tray max.: 3,000 sheets
Per sub tray max.: 100 sheets

Booklet Finisher FS-607 (Option)
Booklet making for up to 20 sheets
(80 images)
2-point and corner stapling
Stapling up to 50 sheets
Centre fold and letter fold in
Auto-shift sorting and grouping
Output for up to 2,500 sheets
Sub tray for up to 100 sheets

Staple Finisher FS-520 (Option)
2-point and corner stapling
Stapling up to 50 sheets
Auto-shift sorting and grouping
Output for up to 3,000 sheets
Sub tray for up to 100 sheets

Post Inserter PI-502 (Option for FS-607/FS-520)
Pre-printed sheet insertion
2 PI trays for 200 sheets each

Punch kit PK-512 (Option for FS-607/FS-520)
Punching (2 and 4 holes selectable)

Punch kit PK-513 (Option for FS-607/FS-520)
Punching (4 holes)

Warm-up time
Less than 420 sec.

Main unit dimensions (W x D x H mm)
786 x 1,056 x 992 (Main unit + OC-506)

Main unit weight
360 kg (only main unit)

*autumn 2007

All specifications relating to paper capacity refer to A4-size paper of 80 gsm quality.

All specifications relating to scanning, copying or printing speeds refer to A4-size paper that is scanned, copied or printed crosswise in multipage, simplex mode.

Some of the product illustrations contain optional accessories.

Konica Minolta does not warrant that any prices or specifications mentioned will be error-free.

Specifications are subject to change without notice.

Microsoft, Windows and the Windows logo are trademarks, or registered trademarks, of Microsoft Corporation in the United States and/or other countries.

All other brand and product names may be registered trademarks or trademarks of their respective holders and are hereby acknowledged.

Printed in Germany on chlorine-free bleached paper.

Your Konica Minolta Business Solutions Partner:



Konica Minolta
Business Solutions Europe GmbH
Europaallee 17
30855 Langenhagen • Germany
Tel.: +49 (0) 511 74 04-0
Fax: +49 (0) 511 74 10 50
www.konicaminolta.eu