

# LC155V



*Cost-efficient, high-speed business color*

*Choose this digital multifunction product (MFP) for fast, high-quality color printing, copying and scanning, plus black-and-white output, advanced security and professional finishing*



# *An ideal choice for color-intensive environments*

With the high-performance Lanier LC155V in-house, the days of outsourcing color jobs are over. Streamline your workflow and enhance your image with this advanced multifunction system, which offers superior speed, reliability and image quality whether printing, copying or scanning in full color or black & white. Not only can your networked workgroups perform large and complex color tasks on demand, you can also consolidate all your costly color devices into one efficient solution. Versatile finishing capabilities give all your jobs that professional touch.

## ***A turnabout in turnaround time***

A fast 55 ppm full color and 60 ppm black & white print and copy speed ensures that even intricate color jobs meet your most pressing deadlines. You'll benefit from the same incredible performance when using the Automatic Reverse Document Feeder (ARDF) or duplexing. What's more, easy one-step access of functions from your PC or at the clearly laid out control panel drives up productivity even further.

## ***Accommodating from start to finish***

**Sized Right.** The Lanier LC155V was designed with convenience in mind. This ergonomic system fits right into your work environment to minimize use of floor space.

**Easy to Operate.** Lanier has drawn upon the simple design and intuitive layout of that black & white system LCD you're used to and brought the same ease of use to the LC155V. Walking up to the system and accessing any print, copy or scan function—even color—is as hassle-free as ever.

**Efficient to the Finish.** Not only can you merge all your color output in one single system, you'll also have the flexibility to collate and staple documents, or even produce finished booklets! Make a lasting impression using the optional 2,000-Sheet Finisher with Saddle Stitch Stapler, ideal for bound and folded newsletters and brochures, or the 3,000-Sheet Finisher with either 100- or 50-sheet stapling that produces stapled sets in no time. The Cover Interposer enhances the look of reports, manuals and other documents with front and back covers.

## ***Advanced, yet user-friendly***

**Work-Ready.** The system's powerful 733 MHz controller immediately meets your heaviest workload head on with fast throughput speed and a generous data capacity that accommodates all your large color files.







*Regain control of document quality and eliminate the time and expense of manual finishing with automated finishing options.*



*The high-speed LC155V prints eye-catching color at 55 ppm and black & white at 60 ppm.*

**Simply Compatible.** The LC155V supports today's popular page description languages (PCL 5c/PCL 6 emulation come standard) and print drivers, so integration with your network is never an issue. The convenient icon-based print driver RPCS (Refined Print Command Stream) makes printing in a variety of Windows applications easy and error free. Optional Adobe®PostScript®3™ is ideal for Macintosh users or for enhancing the work you do with more complex files.

**Seamlessly Connectible.** A choice of connectivity options make the LC155V simple to incorporate into any network. Standard 10/100BaseTX Ethernet or USB 2.0 is complemented by optional IEEE 1284/ECP or IEEE 1394 connectivity. Optional Wireless LAN (IEEE 802.11b) and Bluetooth optimize versatility of communication within your network.

### ***Diverse document distribution options***

While the Lanier LC155V makes documents look good on paper, it also fulfills the need for fast creation and instant, simultaneous distribution of electronic files. This multi-capable color system enables network color scanning plus versatile "Scan-to-" functions that enhance communications, boost productivity, plus trim your expenses.

**Scan-to-Email.** Scanned color or black & white digital images are converted to JPEG, TIFF or PDF format. Send a file as an attachment to one or many e-mail recipients in a flash. One-step e-mail address lookup is made possible by convenient LDAP support. Besides your corporate directory, you can expand your e-mail address book further by entering information in manually.

**Scan-to-Folder.** When you need to share information remotely, there's no easier way than with Scan-to-Folder. Scanned images are stored in a designated Windows folder and accessed by the authorized network user, creating a very cost-effective means for archiving.

**Scan-to-FTP.** When the need to share large files with remote groups arises, Scan-to-FTP handles the task by bypassing the mail server and sending scanned images directly to an FTP server. Files can even be shared outside the network and within different operating systems. Users authorized to access the FTP directory can view, add, remove and download documents anytime.

**Network TWAIN.** Gives users added control over color or black & white digital images by allowing them to perform edits back at the host PC, incorporate images into other electronic documents or save them for future retrieval.



*Choose from a variety of productive finishers that can collate, staple and produce finished documents with front and back covers.*

## Document central

Facilitating the migration from paper-based to electronic document communication is the LC155V's ingenious Document Server, which provides you with the freedom to print scanned documents on demand or e-mail stored documents without having to rescan. You can even create new complex documents by merging hardcopy and electronic files for printout or distribution.

## Color usage with cost control

The LC155V heightens cost consciousness with the help of Color Usage Restriction, a tool that ensures you're only paying for the color you use...and that lets you control the color usage activity of others.

## Cutting-edge security

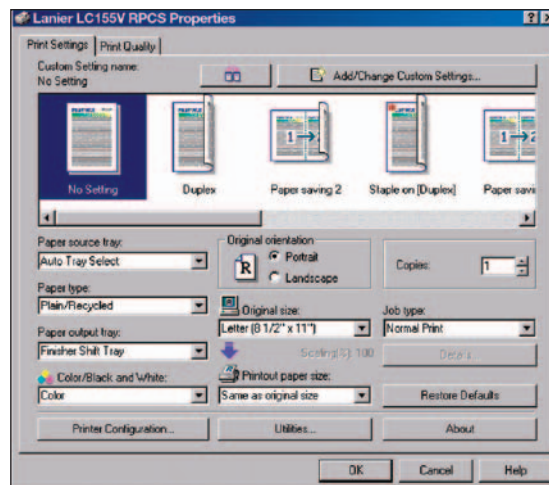
The LC155V delivers ultimate data protection with advanced security features to set your mind at ease.



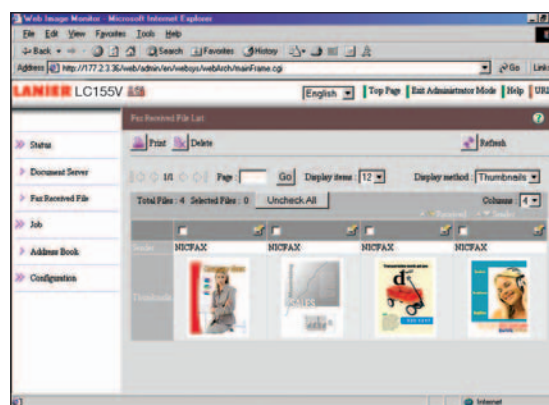
- Windows Authentication—only authorized users with proper names and passwords can access the system.
- SmartDeviceMonitor—an encryption feature that lets users encrypt print data via Internet Printing Protocol (IPP) using Secure Sockets Layer/Transport Layer Security (SSL/TLS) Technology.
- An optional HDD DataOverwriteSecurity System—automatically overwrites information after each copy, scan or print—a measure conforming to the recommended National Security Agency (NSA) methods for managing classified information. The system overwrites data that is temporarily stored on the hard drive by writing over the latent image with random sequences of 1's and 0's three times, making any effort to access and reconstruct residual image data virtually impossible.

## Advanced management capabilities

Even when you're not at your home office, you can still monitor the LC155V and manage your workflow from any PC with an Internet connection. A full suite of intelligent utilities, including Web Image Monitor, keep you in total control of up-to-the-minute business. Check or change printer settings, view job history or current status, monitor toner and paper levels, reset print jobs or reboot the printer—from anywhere in the network.



*Print Windows-based files efficiently with the RPCS driver, which features single-click setup of all printing and finishing job parameters.*



*Manage your workflow remotely with Web Image Monitor.*

## Your Environmental Partner



**Lanier continues its long-standing commitment to developing office solutions with environmentally friendly and superior energy- and supply-saving features, without compromising productivity, including:**

- Quick Start-Up (QSU) Technology
- Power-Saving Sleep Mode
- Duplex and Combine Copy Modes
- Toner Recycling
- Low Noise Levels
- Minimal Ozone Emissions
- Restriction of Hazardous Substances (RoHS) Compliant



Standard 100-Sheet  
Automatic Reversing  
Document Feeder

Optional Cover  
Interposer

Optional 3,000-Sheet  
Finisher

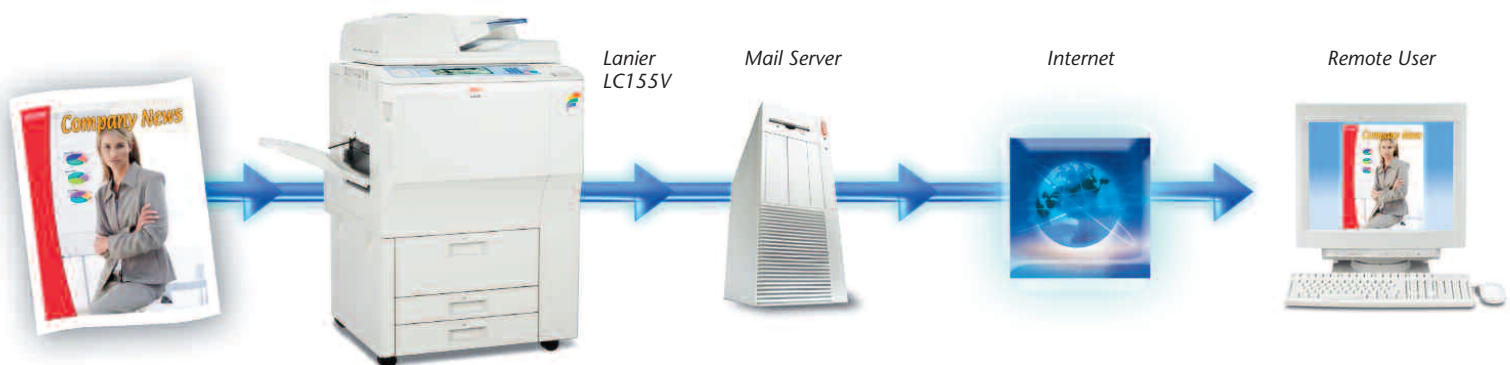
Standard 100-Sheet  
Bypass Tray

Optional  
4,000-Sheet  
Large Capacity Tray

Standard  
2 x 1,100-Sheet  
Tandem Paper Tray

Standard  
2 x 550-Sheet  
Universal  
Paper Trays

## Scan-to-Email



LANIER

LC155V

## SPECIFICATIONS

## MAINFRAME SPECIFICATIONS

<b>Printing Process</b>	4-drum Electrostatic Transfer System with Internal Transfer Belt and Dry Two-component Development
<b>Output Speed</b>	Black & White: 60 ppm Full-Color: 55 ppm
<b>Multiple Copies</b>	1 to 999
<b>Warm-up Time</b>	300 seconds
<b>First Copy Time</b>	Black & White: 6.5 seconds Full-Color: 7.5 seconds
<b>Copy Resolution</b>	600 x 600 dpi
<b>Original Type</b>	Books/Sheets/3D Objects
<b>Output Size</b>	5.5" x 8.5" to 11" x 17" Full bleed output on 12" x 18" 11.69" x 18"
<b>Maximum Image Area</b>	
<b>Standard Paper Capacity</b>	1,100 x 2 + 550 x 2 + 100 Bypass
<b>Optional Paper Supply</b>	4,000-Sheet LCT (max. capacity: 7,400 sheets)
<b>Paper Sizes/Weights</b>	Standard Tray 1: 8.5" x 11" / 14 – 34 lb. Bond Standard Trays 2 & 3: Up to 12" x 18" / 14 – 34 lb. Bond 100-Sheet Bypass: Up to 12" x 18" / 14 lb. Bond – 140 lb. Index 4,000-Sheet LCT: 8.5" x 11" / 14 – 34 lb. Bond
<b>Paper Types</b>	Plain paper, Recycled paper, Laser qualified transparencies
<b>Duplexing</b>	Standard
<b>Output Tray Capacity</b>	500 sheets
<b>Zoom</b>	25% – 400% in 1% increments
<b>Reduction Ratios</b>	93%, 85%, 78%, 73%, 65%, 50%, 25%
<b>Enlargement Ratios</b>	121%, 129%, 155%, 200%, 400%
<b>Page Memory (LTR)</b>	Document Server stores up to 3,000 documents; Maximum pages per document: 2,000 pages
<b>Power Source</b>	120V/20A, 60Hz
<b>Maximum Power Consumption</b>	Less than 1,920W
<b>Dimensions (WxDxH)</b>	29.5" x 33.5" x 41.3" (excludes standard ARDF)
<b>Weight</b>	656.9 lbs. (includes standard ARDF)

## PRINTER CONTROLLER SPECIFICATIONS (STANDARD)

<b>CPU</b>	Intel Celeron LV @ 733 MHz
<b>Memory</b>	1,384MB RAM Std./Max. (Shared) 4 x 80GB HDD = 320GB HDD (Shared)
<b>Page Description Languages</b>	Standard: RPCS, PCL 5c/PCL 6 emulation Optional: Adobe®PostScript®3™/PDF Direct Print
<b>PCL Fonts</b>	PCL: 45 fonts
<b>PostScript Fonts</b>	136 Adobe PostScript Type 1 fonts (optional)
<b>Print Resolution</b>	600 x 600 dpi
<b>Standard Interfaces</b>	10BaseT/100BaseTX Ethernet, USB 2.0
<b>Optional Interfaces</b>	IEEE 1284/ECP Type A, IEEE 1394 Type B, IEEE 802.11b Wireless LAN Unit Type H, Bluetooth Type 3245 (Choose one)
<b>Network Protocol</b>	TCP/IP, IPX/SPX; SMB (NetBIOS over TCP/IP)
<b>Drivers</b>	Apple Talk (Auto Switching) RPCS, PCL 5c/6 and PS: Windows 95/98SE/NT4.0/2000/Me/XP/Server 2003 Netware 3.12, 3.2, 4.1, 4.11, 5.0, 5.1, 6 PS: Mac OS 8.6 – 9.2x, OS X 10.1 or later UNIX; Sun Solaris, HP-UX, SCO OpenServer, RedHat Linux, IBM AIX
<b>Utilities</b>	SmartDeviceMonitor for Administrator and Client, Web SmartDeviceMonitor, Web Image Monitor, DeskTopBinder Lite
<b>Security Features</b>	
<b>DataOverwriteSecurity System (DOSS) Type C (Optional):</b>	Security feature that overwrites latent data on the system's hard drive after copy, scan and print jobs.
<b>Other Security Features:</b>	Locked (Secure) Print, SSL print, SNMP v3 support, Windows Authentication

## SCANNER SPECIFICATIONS

<b>Scanning Resolution</b>	Full-color mode: From 100 – 600 dpi (1,200 dpi TWAIN) Monochrome mode: From 100 – 600 dpi Default Setting: 200 dpi Black & White: 60 spm Full-Color: 45 spm
<b>Scanning Speed</b>	Maximum: 11.69" x 17" 5.5" x 8.5" to 11" x 17"
<b>Scan Area</b>	
<b>Original Size</b>	
<b>Protocol Supported</b>	Network: TCP/IP; Scan-to-Email: SMTP; Scan-to-Folder: SMP, FTP
<b>File Format</b>	Black & White: TIFF (Single/Multi Page), PDF (Single/Multi Page) Grayscale: JPEG (Single Page) Full-Color: PDF (Single/Multi Page)
<b>Scan-to Modes Supported</b>	Scan-to-Email (with LDAP support), Scan-to-Folder FTP/SMB, Network TWAIN scanning

## HARDWARE ACCESSORIES

<b>Automatic Reversing Document Feeder (Standard)</b>	
<b>Original Size</b>	5.5" x 8.5" to 11" x 17"
<b>Original Weight</b>	Simplex: 11 lb. – 34 lb. Bond Duplex: 14 lb. – 34 lb. Bond 100 Sheets
<b>Original Stack Capacity</b>	
<b>Large Capacity Tray (Optional)*</b>	
<b>Paper Capacity</b>	4,000 sheets (Letter) 2,500 sheets (Legal)** 8.5" x 11", 8.5" x 14" **
<b>Paper Sizes</b>	
<b>Paper Weights</b>	14 lb. – 34 lb. Bond
*Requires LCT Adapter	
**Requires Legal size conversion kit	
<b>9-Bin Mailbox (Optional)*</b>	
<b>Number of Bins</b>	9
<b>Stack Capacity per Bin</b>	100 sheets
<b>Acceptable Paper Sizes</b>	5.5" x 8.5" to 11" x 17"
<b>Acceptable Paper Weights</b>	14 lb. – 34 lb. Bond
*Cannot be used with SR842 Finisher or Interposer.	

## SR842 3,000-Sheet Finisher w/100-Sheet Stapling (Optional)\*

<b>Number of Trays</b>	2
<b>Paper Sizes</b>	5.5" x 8.5" to 11" x 17"
<b>Acceptable Paper Weights</b>	14 lb. Bond – 140 lb. Index
<b>Stacking Capacity</b>	Proof Tray: 500 sheets (8.5" x 11" or smaller) 250 sheets (8.5" x 14" or larger) Shift Tray: 3,000 sheets (8.5" x 11" or smaller) 1,500 sheets (8.5" x 14" or larger)
<b>Staple Capacity</b>	Up to 100 pages per set (8.5" x 11" or smaller) Up to 50 sheets per set (8.5" x 14" or larger)

<b>Staple Paper Size</b>	8.5" x 11" to 11" x 17"
<b>Staple Paper Weight</b>	17 lb. – 20 lb. Bond
<b>Staple Positions</b>	Top, Bottom, 2 Staples, Top Slant
<b>Finisher Accessories</b>	Hole Punch Unit, Jogger Option

\*Requires Finisher Adapter

## SR970 3,000-Sheet Finisher w/50-Sheet Stapling (Optional)

<b>Number of Trays</b>	2
<b>Acceptable Paper Sizes</b>	5.5" x 8.5" to 12" x 18"
<b>Acceptable Paper Weights</b>	14 lb. Bond – 140 lb. Index
<b>Stacking Capacity</b>	Proof Tray: 250 sheets (8.5" x 11" or smaller) 50 sheets (8.5" x 14" or larger) Shift Tray: 3,000 sheets (8.5" x 11" or smaller) 1,500 sheets (8.5" x 14" or larger)
<b>Staple Capacity</b>	Up to 50 pages per set (8.5" x 11" or smaller) Up to 30 sheets per set (8.5" x 14" or larger)

<b>Staple Paper Size</b>	8.5" x 11" to 11" x 17"
<b>Staple Paper Weight</b>	17 lb. – 28 lb. Bond
<b>Staple Positions</b>	Top, Bottom, 2 Staples, Top Slant
<b>Finisher Accessories</b>	Hole Punch Unit, Jogger Option

## SR4000 2,000-Sheet Finisher w/Saddle Stitch Stapling (Optional)

<b>Number of Trays</b>	2
<b>Paper Sizes</b>	5.5" x 8.5" to 12" x 18"
<b>Acceptable Paper Weights</b>	14 lb. Bond – 140 lb. Index
<b>Stacking Capacity</b>	Proof Tray: 250 sheets (8.5" x 11" or smaller) 50 sheets (8.5" x 14" or larger) Shift Tray: 2,000 sheets (8.5" x 11" or smaller) 1,000 sheets (8.5" x 14" or larger)

<b>Staple Capacity</b>	Up to 50 pages per set (8.5" x 11" or smaller) Up to 30 sheets per set (8.5" x 14" or larger) Saddle Stitch: Up to 15 sheets
------------------------	--

<b>Staple Paper Size</b>	8.5" x 11" to 12" x 18"
<b>Staple Paper Weight</b>	17 lb. – 28 lb. Bond
<b>Staple Positions</b>	Top, Bottom, 2 Staples, Top Slant, Saddle Stitch

<b>Saddle Stitch Paper Size</b>	8.5" x 11", 8.5" x 14", 11" x 17", 12" x 18" SEF
<b>Finisher Accessories</b>	Hole Punch Unit, Jogger Option

<b>Cover Interposer Tray (Optional)*</b>	
<b>Stack Capacity</b>	200 sheets
<b>Paper Sizes</b>	5.5" x 8.5" to 11" x 17"
<b>Acceptable Paper Weights</b>	17 lb. Bond – 110 lb. Index

\*Cannot be used with SR842 or 9-bin mailbox.

<b>GBC StreamPunch III (Optional)*</b>	
<b>Paper Size</b>	8.5" x 11" LEF
<b>Paper Weight</b>	20 lb. Bond – 110 lb. Index (216 g/m <sup>2</sup> )
<b>Die Sets</b>	CombBind®, Twin Loop wire (2:1 or 3:1), ColorCoil®, VeloBind®, Three-Ring, ProClick®

\*Requires SR842 Finisher.

<b>BK5010 Production Booklet Maker (Optional)*</b>	
<b>Paper Size</b>	8.5" x 11" – 11" x 17"
<b>Paper Weight</b>	16 lb. Bond – 110 lb. Index (216 g/m <sup>2</sup> )

\*Requires SR842 Finisher.

## OTHER OPTIONAL ACCESSORIES

<b>Copy Tray*</b>	
<b>Tab Sheet Unit</b>	
<b>11" x 17" Tandem Tray Converter</b>	
<b>Legal Tray for LCT</b>	
<b>Adobe PostScript 3 Unit Type 3260</b>	
<b>Copy Connector Type 3260</b>	
<b>File Format Converter Type B</b>	

\*If one of the finishers is not selected, the Copy Tray is required.

## SUPPLIES

<b>Black Toner Cartridge</b>	36K output/cartridge (LTR 5% coverage)
<b>Cyan Toner Cartridge</b>	18K output/cartridge (LTR 5% coverage)
<b>Magenta Toner Cartridge</b>	18K output/cartridge (LTR 5% coverage)
<b>Yellow Toner Cartridge</b>	18K output/cartridge (LTR 5% coverage)
<b>Staple for 100-Sheet Stapler</b>	5,000 per cartridge
<b>Staple for 50-Sheet Stapler</b>	5,000 per cartridge
<b>Staple for Saddle Stitch Stapler</b>	2,000 per cartridge



www.lanier.com

Lanier Five Dedrick Place, West Caldwell, NJ 07006

©2007 Lanier is a registered trademark of Ricoh Americas Corporation. All rights reserved. Windows® and Windows® 95/98/Me/NT4.0/2000/XP/Server 2003 are registered trademarks of Microsoft Corporation. Macintosh®, Mac® OS and AppleTalk® are registered trademarks of Apple Computer, Inc. Adobe® and PostScript® are registered trademarks of Adobe Systems, Inc. PCL® is a registered trademark of Hewlett-Packard Company. RPCS™, SmartDeviceMonitor™, DeskTopBinder™ and Web Image Monitor™ are registered trademarks of Ricoh Company, Ltd. All other trademarks are the property of their respective owners. Product specifications subject to change without notice.

Printed in U.S.A. on recycled paper.