

DP-MB350 / DP-MB340 Dimensions & Options

DIMENSIONS¹

DP-MB350



DP-MB340



Options

Optional Tray: DA-LCB350 (520 pages Letter/Legal/A4)

Consumables

Toner Cartridge: DQ-TCB008 8,000 pages (ISO/IEC 19752 standard)
Drum Cartridge: DQ-DCB020 20,000 pages

DP-MB350 / DP-MB340 Specifications

General	
Type	Desktop
Copy/Print Process	Laser Indirect Electrostatic
Developing Process	Single Component
Automatic Document Feeder	DP-MB350: Reverse Type 50 sheets (up to 8.5" x 14", 20lb) DP-MB340: Simplex Type 50 sheets (up to 8.5" x 14", 20lb)
Paper Feed	Standard: 520 sheets Max: 1,040 sheets with optional tray
Paper Weight	17 to 44lb (Simplex), 17 to 24lb (Duplex)
Automatic Duplex Unit	Standard
Power Requirements	120V, 50/60Hz, 10.8A
Warm-up Time (68°F/20°C)	Approx. 16 sec.
Power Consumption	Max.: Approx. 1,150 W Standby: Approx. 9.0 W
Dimensions (WxDxH) ¹	21.0" x 18.1" x 18.8" (533 x 459 x 478 mm)
Weight ¹	Approx. 53lb (24kg) (excluding toner and drum)
Printer	
Network Printer Interface	Ethernet 10Base-T/100Base-TX
Communication Protocol	TCP/IP
Local Printer Interface	High speed USB 2.0
Printer Language	GDI, PCL ^{5e} , PCL6
Printing Speed ²	Up to 35 ppm (Letter)
Paper Size	Letter/Legal/A4
Printing Resolution	Maximum 2400 x 1200 dpi
Printer Memory	DP-MB350: 128MB DP-MB340: 64MB
Compatible Operating Systems	Windows [®] 98/Me/2000/XP/Windows Vista [®] Mac OS [®] X 10.3-10.5 ⁵ Linux [®]

Digital Copier	
Resolution	Up to 600 dpi x 600 dpi (ADF/Flatbed)
Gray Scale	64 steps
First Copy Time	Approx. 15 sec.
Multi Copy Speed ²	35 cpm (Letter)
Maximum Original Size	Legal
Copy Size	Letter/Legal/A4
Original Size	Letter/Legal
Zoom (variable)	25% - 400% (in 1% increments)
Multiple Copy	1 to 99 pages
Network Scanner / Scan-to-Email	
Network Scanner Interface	Ethernet 10Base-T/100Base-TX
Local Scanner Interface	High-Speed USB 2.0
Scanning Size	Letter/Legal/A4
Effective Scanning Width	8.2" (208mm) (Letter)
Scanning Resolution	Up to 600 x 2400 dpi (Optical) Up to 9600 x 9600 dpi (Interpolated)
Data Format	PDF, JPEG, TIFF, BMP
Compatible Client Operating Systems	Windows [®] 98/Me/2000/XP/Windows Vista [®]

G3 Fax	
Compatibility	G3 Fax: ITU-T Group 3, ECM
Modem Speed	33.6 kbps - 2.4 kbps with automatic fallback (G3 Fax)
Coding Scheme	MMR / MR / MH (Conforms to ITU-T Recommendations)
Transmission Speed ³	Approx. 4.0 sec (Letter)
Scanning Resolution	Standard: 8 dots/mm x 3.85 lines/mm Fine: 8 dots/mm x 7.7 lines/mm Super Fine: 8 dots/mm x 15.4 lines/mm
Effective Scanning Width	8.2" (208 mm) (Letter)
Standard Memory ⁴	DP-MB350: 10MB (approx. 780 pages) DP-MB340: 6MB (approx. 450 pages)
Speed Dials	300
One-Touch Dial	10 stations (DP-MB340 only)

Note

- ¹ Dimensions and weights are approximate.
² Continuous copy of a single original. Speeds are contingent upon applications, machine configuration, and status. Individual speeds may vary.
³ Transmission time applies to memory transmission of text data using only ITU-T Image No. 1 between the same models at maximum modem speed. Transmission time may vary in actual usage. Usually public telephone lines can only support communication speeds of 28.8 kbps or lower. Via PBX, transmission speed may fall back to a lower speed.
⁴ Based on ITU-T Image No. 1 scanned in Standard mode.
⁵ Driver is provided via web download.
- Design and specification are subject to change without notice.
Windows and Windows Vista are either registered trademarks or trademarks of Microsoft Corporation in the United States and/or other countries.
Mac OS is trademark of Apple Inc., registered in the U.S. and other countries.
Linux is the registered trademark of Linus Torvalds in the U.S. and other countries.
PCL is a registered trademark of Hewlett-Packard.
All other brand or product names are the property of their respective holders.
IPV6 Ready Logo is the international IPV6 product's certification program managed by the IPV6 Ready Logo Committee. This Product is designed to reduce hazardous chemical substances along with the RoHS directive.

Flexible

Desktop Laser MFP
DP-MB350 / DP-MB340

PRINT 35PPM HIGH SPEED

COPY 35CPM HIGH SPEED

SCAN TO PC / EMAIL / FTP

FAX WITH SUPER G3



Simple Fax Preview!

Panasonic[®]

Panasonic Canada Inc.
5770 Ambler Drive, Mississauga, Ontario L4W 2T3
(905) 238-2380 FAX (905) 238-2388
www.panasonic.ca



As an ENERGY STAR[®] Partner, Panasonic has determined that this product meets the ENERGY STAR guidelines for energy efficiency.



ISO 9001 Quality Management System
Our business processes which produce document, information and network products, from manufacturing to marketing, conform to ISO9001 Quality Management Systems standard. Design, development, manufacture, installation, repair and maintenance of document, information and network products, their associated devices and consumables. In addition, the plants outside Japan have acquired ISO9001 certification.

Panasonic ideas for life

Design and Functionality

The Panasonic DP-MB350 and DP-MB340 are a high-performance "desktop" Multi-Function-Printer that is an excellent choice for any small to mid-size office workgroup, small office and remote home offices. The Network-ready DP-MB350 / DP-MB340 is equipped with 10/100 Base-TX connectivity and is ready to take on any size print or copy job with its large 520-sheet standard capacity input tray and 50-sheet reversing ADF*1. The user friendly control panel interface features large, easy to read buttons and a bright 3.6-inch colour LCD (TFT) display*2. This provides a simple to use interface for adjusting device settings and allows you to preview incoming faxes*3 for simple and efficient document management. For simple device management, the built in Configuration Web Page allows device users and system administrators to easily check device status, toner level, adjust system settings and update the device address book. Packed with all the right features in a small footprint, the DP-MB350 / DP-MB340 are a robust multifunction printer, that has a rich feature set and is easy to operate.

*1 Only for DP-MB350. DP-MB340: 50-sheet simplex ADF

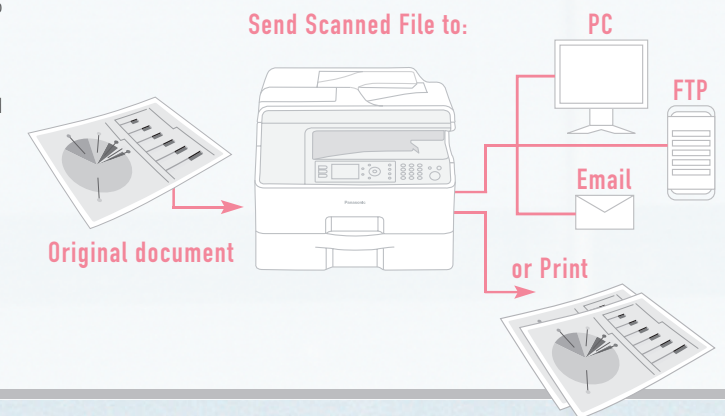
*2 Only for DP-MB350. DP-MB340: 16 digits / 2 lines LCD display

*3 DP-MB340: Only Web FAX Preview with LAN connected PC



Quick & Easy Scanning

The DP-MB350 / DP-MB340 can quickly and easily convert paper documents into electronic documents that can be edited or archived. The DP-MB350 / DP-MB340 is capable of scanning single page documents by utilizing the flatbed scanner or multiple documents using the built-in 50-sheet ADF. Documents can be scanned in full colour with image resolutions up to 9600 dpi x 9600 dpi (interpolated). The standard Scan-to-Email feature allows you to send scanned document directly from the DP-MB350 / DP-MB340 as an Email attachment in PDF, JPEG or TIFF formats without needing a PC. To complete your digital document needs, the standard Panasonic Quick Image Navigator software allows you to conveniently manage your digital documents and the Readiris OCR software suite (also included) allows you to easily convert digital documents into text editable documents.

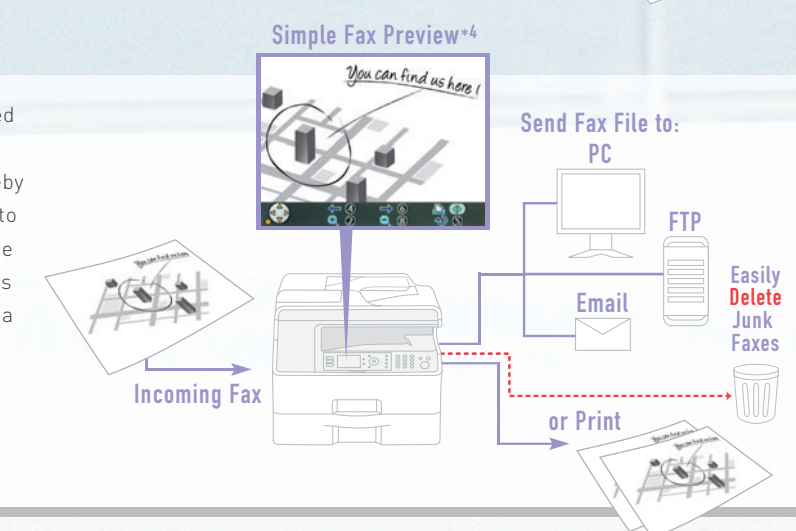


Preview Incoming Faxes*4

Equipped with Super G3 fax capabilities, the DP-MB350 offers the added convenience of a simple fax preview. Utilizing the large 3.6" LCD (TFT) screen*5, you can preview incoming faxes before they are printed, thereby reducing paper and toner consumption. You can zoom, rotate or scroll to check the fax contents. Once the document is previewed, you can decide whether to print, delete or forward the document to a PC, FTP site or as an Email Attachment. In addition, the DP-MB350 / DP-MB340 features a Junk Fax filter to prevent unwanted faxes from being received. Thus providing yet another environmentally friendly feature to help reduce unnecessary paper and toner consumption.

*4 DP-MB340 Only Web FAX Preview with LAN connected PC

*5 Only for DP-MB350. DP-MB340: 16 digits / 2 lines LCD display



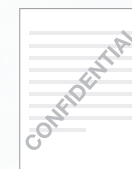
High Speed Printing

The DP-MB350 / DP-MB340 prints up to 35 ppm in B&W with image resolutions up to 2400 dpi x 1200 dpi. Panasonic's State-of-the-Art image smoothing technology eliminates unsightly jagged edges on printed documents, while making text and graphics appear crisp and clear. Environmentally friendly features of the DP-MB350 / DP-MB340 include standard automatic duplex printing to help reduce paper consumption, toner save mode to reduce the amount of toner consumption when printing draft or sample documents, and N in 1 printing which allows up to 16 pages to be printed on a single sheet of paper.

Convenient Functions

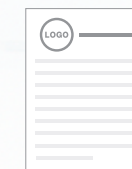
Watermark

A watermark such as "Confidential" or "Draft" can be printed on the background or foreground of a document. The size and angle of the mark can be adjusted as desired.



Overlay

A custom image such as a company logo can be saved and printed on a document.



Booklet

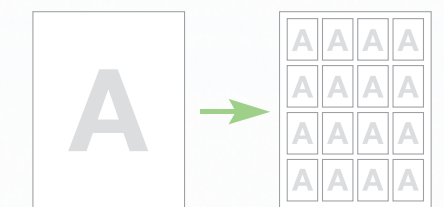
By Utilizing the Automatic Duplex Unit You can produce brochures or small booklets in-house and eliminate the use of an outside print shop.



N in 1 Functions

N in 1

This cost saving feature reduces originals and prints up to 16 pages onto one sheet.



Large 3.6" Colour LCD



Convenient Copy Functions

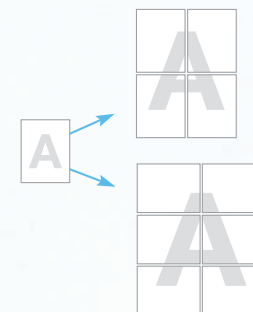
The DP-MB350 / DP-MB340 can copy up to 35 cpm and is able to take on any size copy job, with its standard 520-sheet multipurpose paper drawer expandable to 1,040 sheets and 50-sheet ADF. Advanced copy features of the DP-MB350 / DP-MB340 include Proof Copy, Quick ID Copy, N in 1 and repeat copy. All these features and more can be accessed from the large 3.6" colour LCD (TFT) display*6.

*6 Only for DP-MB350. DP-MB340 16 digits / 2 lines LCD display

Convenient Functions

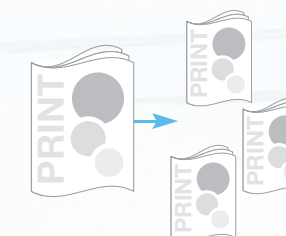
Poster Copy

Copy a normal size image and easily create a large size poster at 2x2 or 3x3 sizes.



Proof Copy

On a large copying job, you can generate a sample set before printing the entire job.



N in 1 Functions

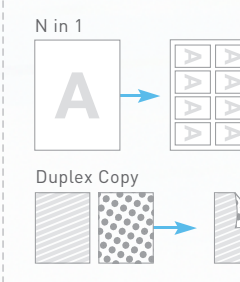
Quick ID Copy

Copy both sides of one or more ID or business cards consecutively, and then print onto a single page in the 2 in 1, 4 in 1 or 8 in 1 format.



N in 1 & Duplex Copy

With N in 1 you can copy up to 8 originals onto one sheet, while Duplex Copy utilizes both sides of the paper for reduced paper usage.



Easy Repeat

Copy one original and print it repeatedly on a single page in the 2 in 1, 4 in 1 or 8 in 1 format.

