

WORKIO[®]

DP-190

total network multifunction solution

COLOR
SCANNER



Panasonic ideas for life

Send it, print it, scan it or copy it – stable, reliable performance assured every time

A Super G3 fax with JBIG compression for enhanced faxing efficiency, the DP-190 is also the ultimate all-round document management tool for corporate offices.

In addition to its 50-sheet automatic document feeder, the DP-190 is equipped with a colour flatbed scanner that allows you to easily scan magazines or books and convert them into a TIFF/JPEG or PDF file.

The DP-190 also comes standard with Ethernet network connectivity, as well as a USB Interface, so it can be used as a high-speed 19-ppm network printer with features like duplex printing and 2-in-1 or 4-in-1 printing.

For security, a built-in User Authentication^{*A} function prevents unauthorized access for Faxing, Scanning and/or Copying.

From faxing and copying to printing and colour scanning, the DP-190 is all you need.

*A Requires Active Directory environment.



send it!

Network Colour Scanner



Send it, print it, scan it or copy it – stable, reliable performance assured every time

ESTIMATE

To: SP4 Pty Ltd
Subject: LIT (LIT) 2000

Estimate No: 1234
Date: 15/01/2000

\$5,050.00

Description	Quantity	Unit Price	Amount
1. LIT (LIT) 2000	1	5,050.00	5,050.00

Results of the investigation

Based on the following information:

Item	Value
1. LIT (LIT) 2000	5,050.00

A paper that Super 30 has with 100% coverage for enhanced printing efficiency. The DP-1900 is also the ultimate all-around cost-effective management tool for your department and workplace.

In addition to its 35-sheet automatic document feeder, the DP-1900 is equipped with a color matched scanner that allows you to easily scan magazines or books and convert them into PDF or other digital files.

The DP-1900 also comes standard with Ethernet network connectivity, as well as a USB interface. It can be used as a high-speed 30-page-per-minute color copier with features like duplex printing and 3-in-1 or auto printing.

For security, a built-in Real Authentication System allows you to control access to stored data, making it almost instant to prevent unauthorized access and protecting your critical confidential data from this or theft.

print it!

Network Printer

Super G3 Fax and Email

Super G3 Fax / Email

In addition to Super G3 Fax capability, the DP-190 is equipped with a Scan-to-Email function that lets you convert documents to TIFF, JPEG or PDF and send them as email attachments to PCs.



Maximum 1,000-Station Auto-Dialer

For quick dialing, you can store up to 200 phone numbers/email addresses from the QWERTY keyboard or program the Auto-Dialer and import a listing from an existing PC file*^B using the standard Address Book Editor Software on your PC. Auto-Dialer capacity can be expanded to a maximum of 1,000 stations with the optional Hard Disk Drive Unit.

*^B CSV/Comma-Delimited text file.

Quick Name Search

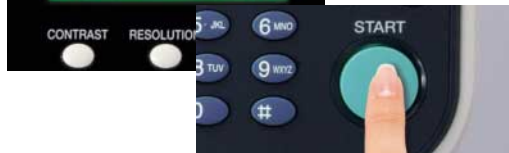
Simply key in the first letter of the recipient's name on the QWERTY keyboard and press it repeatedly to scroll through the listings that appear on the display. When you find the name you're looking for, just select it. It's that simple!



Select the initial letter...



Scroll to search the list...



And send.

Directory Search

Directory Search allows you to enter multiple letters via the QWERTY keypad to narrow down the search and quickly find the name you're looking for in a large database such as an LDAP*^C (Lightweight Directory Access Protocol) server or the optional 1,000-station Auto-Dialer*^D. The DP-190 retrieves email addresses from the LDAP server's directory, so you can easily program them into the Auto-Dialer.

*^C LDAP server is required on the network.

*^D Optional Hard Disk Drive Unit is required.



Network Colour Scanner



Network Scanner

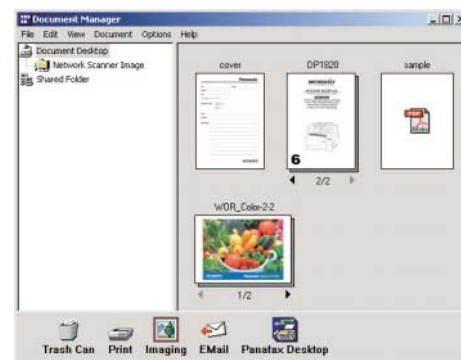
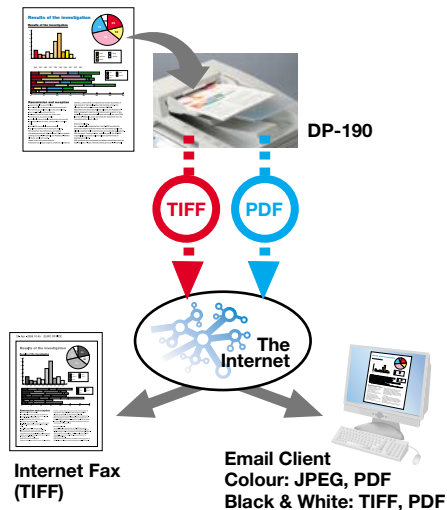
You can scan and send documents in either color or monochrome to a PC or an FTP server as a PDF or TIFF/JPEG file. The flatbed scanner also allows you to scan a variety of media such as books as well as smaller items like ID and insurance cards.

Document Workflow with Document Management System software

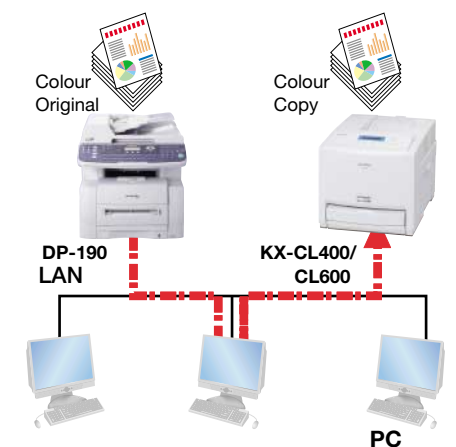
Panasonic Document Management System software streamlines your document workflow, allowing you to manage and control all processes right from your PC desktop. All you have to do is drag and drop the thumbnail picture of the scanned document onto an icon of the pre-programmed PC application such as OCR, Email or image editing software.

Remote Copy

When users press the Remote Copy key, the DP-190 automatically sends the scanned data through the PC to a pre-selected network printer. This allows users to easily make colour copies of a colour document when a colour printer is connected to the LAN.



Remote Copy



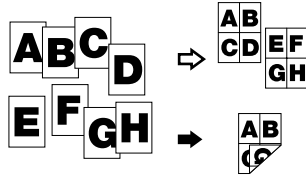
Standard Network Printer

High Resolution of 1,200-equivalent x 600 dpi

In addition to standard 600 x 600 dpi print resolution, you can increase print resolution to 1,200 dpi-equivalent x 600 dpi (in PCL/PS mode) by adding an optional printer controller. This gives crisp, clean prints with superior legibility and halftone gradations — even with very tiny characters or complex images.

Standard Duplex and 2-in-1/4-in-1 Printing

For added productivity, the DP-190 comes standard with an automatic duplex printing capability that allows the user to print on both sides of the paper. For added cost savings, double-sided printing can also be used with 2-in-1/4-in-1 printing to greatly reduce your paper expenses and save on filing space.



Built-in Network Printing Capability

The DP-190 comes standard with a built-in Ethernet LAN interface, so users can set it up as a network printer that can be used by any PC on the LAN. In addition, the unit's standard USB interface allows direct connection to a dedicated PC.

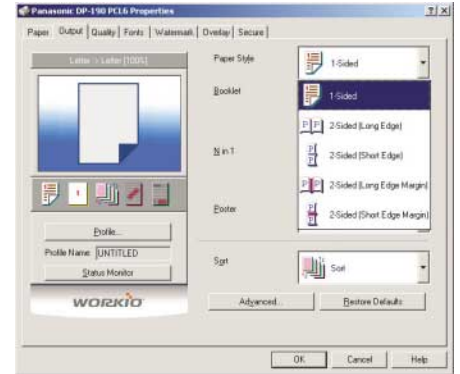


Mailbox Print/ Secure Mailbox Print^E

Security is a topic of concern in today's office environments. Security print for up to 100 users is available. Simply print directly to the Security Print Mailbox^E and the DP-190 stores the print file until the user retrieves it at the machine by entering a mailbox ID and password. This is especially useful when generating sensitive or confidential documents. Mailbox Print allows print jobs to be stored without a password for convenience.

^E Optional Hard Disk Drive Unit is required.

Easy Print Driver Installation, User-Friendly Graphical Interface.



Advanced Digital Copier

50-sheet ADF

Why wait? With the 50-page Automatic Document Feeder (ADF), you can fax, copy, scan and email multi-page documents at the touch of a button and be on your way.



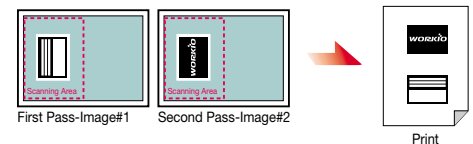
Digital SkyShot

Panasonic's Digital SkyShot is especially convenient for copying small-sized originals like cheques or ID cards. Users can even reproduce documents with unusual shapes — round, oval, etc. — without generating any unnecessary black areas simply by making a copy with the platen cover open.



Double Exposure for Double Savings

By selecting the Double Exposure key located on the control panel, users can make quality copies of small double-sided documents on a single sheet of paper without the black borders — even if the platen cover is open. This is especially convenient for copying small double-sided originals such as ID and insurance cards, cheques, and receipts.



Preventing Data Leakage

User Authentication^{*F}

The DP-190 also supports network-based User Authentication in a Windows ServerTM environment. Users must be authenticated before they can use the machine for copying, faxing and/or scanning. Additionally, the DP-190 also supports sending documents via a RightFax[®] Server^{*F,*G}. The combination of User Authentication and your RightFax Server can help to prevent unauthorized fax transmissions.

^{*F} Requires Active Directory environment.

^{*G} Requires RightFax[®] Ver.8.0 or later.

Network Accounting Manager software^{*H}

Panasonic's Network Accounting Manager software gathers the DP-190's copy, print, scan and fax history. This data is presented in an easy-to-use web-based interface. This data can be used to track cost as well as usage of the unit. This data can also be exported in CSV (comma-separated value) or XML (extensible Markup Language) format. When used in combination with the Job Tracking function^{*I}, The Network Accounting Manager lets you track faxes and scans including images of sent items!

^{*H} Optional Hard Disk Drive Unit and Image Memory are required.

^{*I} Requires Active Directory environment.

User Friendly

Easy Front Operation

Everything is easily managed from the front of the unit: paper loading, fax, copy and printer output.



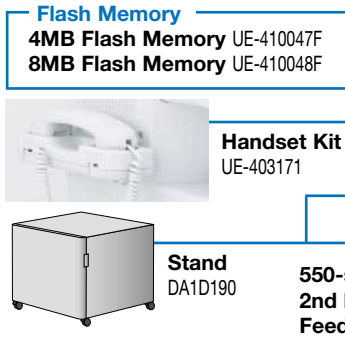
Extended Reliability

Maintenance Support

The Check & Call function automatically reports low toner status and certain mechanical problems to a service centre while the Remote Diagnostic System enables expert technicians to quickly troubleshoot and provide solutions via a telephone line or the Internet.



Options



Printer/Network Printer

Expansion Board
 DA-EM600F

PCL Printer Controller Module
 DA-PC188

**PS/PCL Multi-Page Description
 Language Controller Module**
 DA-MC188

Image Memory

Image Memory
 (16MB) DA-SM16B
 (64MB) DA-SM64B

Hard Disk Drive Unit

Hard Disk Drive Unit (40GB) DA-HD19

Software

Accounting Software DA-WA10

Consumables



DP-190 Specifications

General Functions

Type	Desktop	
Print Process	Laser Indirect Electrostastic	
Developing Process	Dry Single Component	
Automatic Document Feeder	50 sheets (Letter: 20 lb, A4: 75 g/m ²)	
Paper Feed	Standard 250-sheet paper tray unit x 1 + 1-sheet bypass	
	Maximum 800 sheets with option	
	Paper Tray:	16 to 28 lb (60 to 105 g/m ²)
Paper Weight	Bypass:	16 to 44 lb (60 to 165 g/m ²)
Power Requirements	AC 120 V, 60 Hz	
Power	Maximum Power:	900 W
	Power Saver Mode:	Approximately 20 Wh
Consumption	Sleep Mode:	Approximately 12 Wh
	Approximately 48.5 lb (Excluding optional equipment)	
Dimensions (W x D x H)*1	18.2" x 19.9" x 20.6"	
Weight*1	Approximately 48.5 lb (Excluding optional equipment)	

G3 Fax Functions

Compatibility	ITU-T Group 3, ECM	
Modem Speed	33.6 kbps - 2.4k bps with automatic fallback	
Coding Scheme	JBIG/MMR/MR/MH	
Transmission Speed*2	Approximately 2.7 seconds	
Scanning Speed*3	2.7 seconds (Letter portrait in Standard or Fine Mode)	
Scanning Resolution	Standard:	203 dots/inch x 98 lines/inch (8 dots/mm x 3.85 lines/mm)
	Fine:	203 dots/inch x 196 lines/inch (8 dots/mm x 7.7 lines/mm)
	Super Fine:	406 dots/inch x 391 lines/inch (16 dots/mm x 15.4 lines/mm)
600 dpi:	600 x 600 dpi	
Effective Scanning Width	8.34" (212 mm)	
Recording Resolution	Maximum 600 x 600 dpi	
Standard Memory*4	2 MB (Approximately 120 pages)	
Optional Memory*4,5	Base memory plus 4 MB (320 pages)/ 8 MB (640 pages)	
	200 (Maximum 1,000 with optional HDD)	

Digital Copier Functions

First Copy Time	Approximately 10 seconds (Letter)	
Resolution	600 x 600 dpi	
Gray Scale	256 steps	
Multi Copy Speed*6	Up to 19 cpm	
Maximum Original Size	Letter, Legal*7	
Copy Size	Letter/Legal/Invoice*8	
Copy Ratio	Enlargement (fixed)	155%, 129%
	Reduction (fixed)	79%, 65%, 61%
Zoom (variable)	50% - 200% (in 1% increments)	
Multiple Copy	1 to 999, Automatic reset to 1	
Exposure Controller	Text, Text/Photo, Photo	
Image Memory for Sorting	Standard	16 MB
	Optional	Base Memory plus 16 MB/64 MB (Maximum 80 MB) 12 GB (with optional HDD)

Network Scanner Functions

Network Scanner Interface	Ethernet 10Base-T/100Base-TX	
Scanning Size	Letter/Legal*7/Invoice	
Scanning Resolution	Colour:	75 x 75 dpi, 150 x 150 dpi, 300 x 300 dpi
	Black & White:	150 x 150 dpi, 300 x 300 dpi, 600 x 600 dpi
Scanning Speed*3	Colour:	Approximately 11 seconds (Letter)
	Black & White:	Approximately 2.7 seconds (Letter)
Coding Scheme	Colour:	JPEG
	Black & White:	JBIG/MMR/MR/MH
Data Format	Colour:	JPEG, PDF
	Black & White:	TIFF, PDF

Network Printer Functions

Printer Interface	Ethernet 10Base-T/100Base-TX	
Local Printer Interface	USB1.1	
Printer Language	Standard	Panasonic Printing System for Windows®
Option	PCL 6 Emulation*9, Adobe® PostScript®3™*10	
Printing Speed*2	Up to 19 ppm	
Paper Size	Letter/Legal/Invoice*8, Envelope*8	
Printing Resolution	1,200 dpi equivalent x 600 dpi (PCL, PS) 600 dpi x 600 dpi, 300 dpi x 300 dpi (GDI, PCL, PS)	
	20 MB	
	Printer Memory	
Compatible Operating Systems	Windows® XP/2000/Server 2003/ 98/Me, Windows NT® 4.0 Mac OS 8.6 - 10.3 (PS only)	

Scan-to-Email / Internet Fax Functions

Compatibility	IETF RFC 3965, ITU-T T.37	
Communication Protocol	TCP/IP, SMTP, POP3, MIME, DHCP LDAP, SNMP/MIB	
Network Connectivity	Ethernet 10BASE-T /100BASE-TX (IEEE802.3)	
Data Format*11	TIFF-FX (Profile S/F/J), PDF, JPEG	

Notes

- *1 Dimensions and weight are approximate.
 - *2 Transmission time applies to memory transmission of text data using only ITU-T Image No.1 between the same models at maximum modern speed. Transmission time may vary in actual usage. Usually public telephone lines can only support communication speeds of 28.8 kbps or lower. Via PBX, transmission speed may fall back to a lower speed.
 - *3 Scanning speed applies to the feeding process from the top to the end of a single page test chart. The time for the feeding process does not include the time that it takes for the top edge of the page to reach the scanning point and page ejection. Time for entire storing process is not applied.
 - *4 Based on ITU-T Image No.1 scanned in Standard resolution mode.
 - *5 May not be available in certain destinations.
 - *6 Speeds are contingent upon applications, machine configuration, and status. Individual speeds may vary.
 - *7 From ADF only.
 - *8 Bypass only.
 - *9 PS/PCL Multi-Page Description Language Controller Module or PCL Printer Controller Module is required.
 - *10 PS/PCL Multi-Page Description Language Controller Module is required.
 - *11 Internet Fax only supports TIFF-FX format.
- Design and specification are subject to change without notice. Not all options may be available at the time of notification.

Microsoft® Windows® and Windows NT® are registered trademarks of Microsoft Corporation.
 Adobe®, PostScript®, PostScript®3, PDF and PostScript logo® are trademarks of Adobe Systems, Inc.
 PCL is either trademark or registered trademark of Hewlett-Packard Company and/or its subsidiaries.
 WORKIO® is a registered trademark of Matsushita Electric Industrial Co., Ltd.
 All other brand or product names are the property of their respective holders.

Dimensions



As an ENERGY STAR® partner, Panasonic has determined that this product meets the ENERGY STAR® guidelines for energy efficiency.

ISO 9001 Quality Management System

Our business processes which produce document, information and network products, from manufacturing to marketing, conform to ISO 9001 Quality Management Systems standard. Design, development, manufacture, installation, repair and maintenance of document, information and network products, their associated devices and consumables, their associated devices and consumables, their associated devices and consumables, their associated devices and consumables have acquired ISO 9001 certification.



Panasonic® ideas for life

Panasonic Canada Inc.
 5770 Ambler Drive, Mississauga, Ontario L4W 2T3
 (905) 238-2380 Fax (905) 238-2388