

SAVIN®

C9065/C9075 Color Digital Imaging System

SPEED > QUALITY > COLOR > FINISHING > **PERFORMANCE >**



**The right choice for fast, flexible,
high-volume color output.**



Stay competitive and reduce total cost of ownership.

Engineered to provide outstanding speed and image quality, the SAVIN® C9065/C9075 is a complete solution for fast-paced offices and select high-volume environments, such as centralized reprographics departments. This powerful system delivers the advanced performance you need to handle any document-related task quickly and efficiently. It has the capacity and reliability to consolidate color volume to a single, cost-effective system. It also offers the flexible finishing, versatile paper handling and the impressive color quality you need to eliminate outsourcing and minimize total cost of ownership (TCO).



The intuitive, full-color touch-screen makes it easy to find exactly what you need.

Proven Productivity

Staying competitive means doing more work in less time with accuracy and reliability. Trust the Savin C9065/C9075 to provide exactly what demanding users need.

- Reduce turnaround time with fast output. The C9065 delivers 60 color and 65 black & white pages per minute and the C9075 achieves speeds up to 70 color and 75 black & white pages per minute. Both offer duplexing at 100% of rated speed.
- Accelerate productivity with one-pass duplex scanning. This not only reduces scan time, it minimizes wear and tear on sensitive originals.
- Navigate to the features you need in just a few quick selections. The large full-color WVGA control panel is the same intuitive LCD touch-screen available on all Savin MFPs, so you can upgrade the fleet without retraining users.
- Meet tight deadlines and complete quick-turn jobs with one of the shortest warm-up times and fastest first copy times of any high-speed color device in its class.
- Optimize efficiency with the ability to reload paper without interrupting the current job. Total paper capacity with all options is an incredible 7,400 sheets.

C9065/C9075 Color Digital Imaging System

SPEED > QUALITY > COLOR > FINISHING > PERFORMANCE >

High-End Finishing

Extend the possibilities of document production with a variety of paper handling accessories and professional-grade finishing options.

- Experiment with new formats. The Multi-Fold Unit offers six folding options, including Half-Fold, Double Parallel Fold and Gate-Fold.
- Create full-color output on a wide range of paper grades. The system accepts up to 140 lb. Index (253 g/m²) through the Paper Trays and up to 110 lb. Cover (300 g/m²) through the Bypass Tray.
- Improve uptime with the optional Large Capacity Tray. This 2,000-sheet accessory holds paper sizes up to 12" x 18" and weights up to 110 lb. Cover (300 g/m²).
- Distribute high-quality finished documents with stapling, hole punching, ring binding or saddle-stitching, depending on your needs.

Reduce Operating Costs

In addition to its best-in-class affordability, the Savin C9065/C9075 delivers the speed and versatility organizations need to keep operating expenses low.

- Perform a wide variety of color and finishing tasks in-house, eliminating the need to outsource complex jobs to expensive third-party providers.
- Consolidate jobs from multiple laser or inkjet printers to cut supply costs.
- Print marketing collateral, forms, training packets and other documents on demand instead of managing large volumes of preprinted inventory.
- Empower creative teams to produce high-quality layouts, proofs and mock-ups with exceptional speed and quality.

- Improve workflow in copy shops and print-for-pay environments by adding high-quality color capacity and finishing capabilities that are ideal for quick-turn jobs.

Impressive Image Quality

The high-powered color print engine in the Savin C9065/C9075 creates high-resolution images that capture your customers' attention.

- Maximize edge definition, coverage consistency and color density with breakthrough PxF oil-free toner from Savin. Smaller particles and a lower melting point combine to create smooth blends and solid fills.
- Help visually impaired users with a special printer driver function that adjusts color levels to enhance readability.

Single-Pass Duplex Scanning



Scan both sides of any original without feeding it twice using single-pass duplex scanning.

High-Quality Finishing Options



Create a variety of full-color documents with different folding options.

Enhance performance and quality while reducing cost.

Optional Cover Interposers

Feed pre-printed sheets from one or two sources for front and back covers.

Optional 3,000-Sheet Finishers

Choose from 50- or 100-sheet stapling and 2- or 3-hole punching.

Optional 2,000-Sheet Booklet Finisher

Fold and staple documents to produce finished booklets and 2- or 3-hole punching.



50-Sheet Finisher

This finisher lets you select multi-position stapling for documents up to 50 pages.

Optional FD5000 Multi-Fold Unit

Execute several different folds to create a variety of finished documents.

Optional RB5000 Ring Bind Unit

Punch holes and insert plastic rings to produce ready-to-distribute books.

BK5010e Booklet Maker

Saddle stitch up to 30 sheets to create 120-page booklets.

GBC StreamPunch™ III

Create professional-quality bound books with in-line punching in a variety of patterns.

Versatile Paper Sources

Standard paper sources include the Tandem 2 x 1,100-Sheet Paper Tray, two 550-Sheet Paper Trays and Bypass Tray for a total of 3,400 sheets. With additional options shown here, this system can hold up to 7,400 sheets.



C9065/C9075 Color Digital Imaging System

SPEED > QUALITY > COLOR > FINISHING > PERFORMANCE >

150-Sheet Automatic Document Feeder (ADF)

Offers single-pass color duplex scanning.

WVGA Control Panel

The large full-color LCD touch-screen simplifies job selection and programming.



Optional Large Capacity Trays

The RT4000 DLT/LCT utilizes the system Bypass Tray for a straight paper path. This helps to reliably feed up to 110 lb. Cover stock (300 g/m²). The DLT tray holds 2,000 sheets, up to 12" x 18" and 110 lb. Cover. The RT43 LCT holds 4,000 sheets, up to 8.5" x 11" and 34 lb. Bond.

Optimize Color Output

Configure the C9065/C9075 with the Fiery E-7200 print controller for professional-grade print and color control.

- Boost onboard power and expedite complex processing tasks with a 2.0GHz processor.
- Get all the advantages of Fiery color manipulation without giving up familiar Savin functionality for other tasks. Even if you choose the optional Fiery controller, you can keep user-friendly Savin menus for a full host of scanning capabilities.
- Streamline workflow with convenient drag-and-drop functionality. Just point and click to move files from the desktop to a print queue, prepare files for output or balance workflow among multiple connected devices.
- Maximize job-to-job efficiency with the Command WorkStation utility. Switch effortlessly from managing jobs to configuring the controller's settings.

- Bridge the gap between platforms. The Fiery controller provides identical functionality in both Windows and Mac environments.

Enhance Personal Productivity

The App2Me® solution revolutionizes document management, enabling users to create customized workflows and execute them anywhere they go.

- Download widgets to any client (desktop PC, laptop or Smartphone) and use them on any Savin MFP enabled with App2Me.
- Enjoy maximum convenience at each App2Me-enabled MFP, which is completely personalized no matter where you go.
- Simplify complex workflows. Widgets can be created to combine, distribute, edit and create documents, as well as perform many other tasks automatically.
- Maximize productivity. App2Me improves efficiency through widgets that control a virtually endless array of MFP, software or Web service-driven workflows.

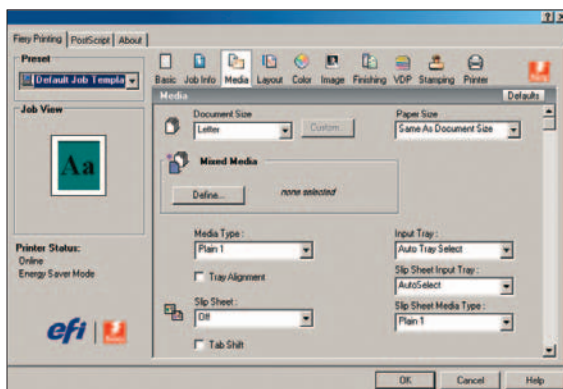
- Create specialized widgets for almost any need, in any framework across multiple platforms that App2Me supports, such as Google Desktop™ and more.

Multifunction Performance

The C9065/C9075 integrates a diverse range of capabilities into a relatively small footprint, enabling you to reach new heights of productivity and efficiency.

- Manage virtually any document-related task with this incredibly versatile, high-speed system. Choose from advanced printing, copying, faxing and scanning functions.
- Reduce network traffic with high-compression PDFs, especially when handling large full-color files.

Fiery E-7200 Interface



Expedite full-color job processing with the incredibly fast EFI Fiery E-7200 print controller.

App2Me



With App2Me, you can download time-saving and workflow-enhancing widgets and use them at any Savin MFP enabled with the App2Me solution.

C9065/C9075 Color Digital Imaging System

SPEED > QUALITY > COLOR > FINISHING > PERFORMANCE >

Vivid Color



Expect vivid, intense colors with a powerful 1200 dpi print engine and new PxP oil-free toner.

Ring Binding



Choose the Ring Bind Unit to create ready-to-distribute training packets, reports and other lengthy documents.

Protect Every Document

Advanced security features ensure that sensitive documents and the system itself remain safe from multiple threats.

- Restrict system access to authorized users. The system supports external (Windows, LDAP) and internal (basic and user code) authentication.
- Protect business critical information with the DataOverwriteSecurity System (DOSS) option. It automatically overwrites the hard drive after copy, scan, fax and print jobs. You can also use the HDD Encryption option to protect data, even if the hard drive is removed or stolen.

Environmental Advantages

Many organizations are “going green” by setting goals for sustainability. The C9065/C9075 helps support these efforts.

- Minimize total energy consumption. The C9065/C9075 uses significantly less electricity without compromising speed, productivity or functionality. It is also designed to use less energy during sleep mode.
- Maintain outstanding image quality. With its lower melting point, PxP toner requires less energy, yet delivers the high-quality results you expect.

The Total Green Office Solution

Savin continues its long-standing commitment to developing office solutions with environmentally friendly and superior energy- and supply-saving features, without compromising productivity.



GENERAL SPECIFICATIONS

Configuration	Console
Scanning Element	Flatbed with moving 3-line CCD array image-scanning
System Memory	320GB (160GB x 2) (Shared)
Document Feeder	Standard 150-Sheet ADF with single-pass color duplex scanning
Copy Resolution	600 dpi
Color/Grayscale	256 Levels
Quantity Indicator	1 - 9,999
Original Type	Sheet/Book/Object
Original Size	Up to 11" x 17"
Warm-Up Time	C9065: <70 sec; C9075 <60 sec.
First Copy Speed	C9065: 5.7/7.5 sec. (BW/FC) C9075: 4.9/6.4 sec. (BW/FC)
Output Speed	C9065: 60/65 (FC/BW) C9075: 70/75 (FC/BW)
Standard Paper Capacity	1st Tray 1,100 x 2 550 sheets x 2nd & 3rd trays, 100-Sheet Bypass Tray 3,400 standard 7,400 sheet std. max capacity 5.5" x 8.5" to 12" x 18"
Paper Size	14 lb. Bond - 80 lb. Cover (216 g/m ²) (Tray 1, 2)
Paper Weight	14 lb. Bond - 140 lb. Index (253 g/m ²) (Tray 3) 17 lb. Bond - 90 lb. Index (163 g/m ²) (Duplex) 14 lb. Bond - 110 lb. Cover (300 g/m ²) (Bypass)
Magnification	7 reduction and 5 enlargement
Zoom	25% to 400% in 1% increments
Power Requirements	C9065/120-127V/20A/60Hz C9075/208-240V/20A/60Hz
Dimensions (WxDxH)	29.5" x 33.5" x 48.4" (including ADF)
Weight	<657 lbs.
Copier Features:	
Auto Paper Selection, Auto Reduce/Enlarge, Auto Start, Auto Tray Switching, Auto Image Density, Duplex, User Codes, Stapling, Color Erase/Convert, Electronic Sort, Image Rotation, Rotate Sorting, Series Copy, Doc Server, User Tools, Job Presets, Book/Series/Combine, Insert Cover/SlipSheet, Chaptering, Tabs, Color/Image Creation, Sample Copy, Energy Saver, Image Adjustment, Multiple Security Options	

PRINTER SPECIFICATIONS (STANDARD)

CPU	Intel Pentium - M 1.4GHz
RAM	2GB (STD/MAX)
HDD	320GB (160GB x 2) (Shared)
Standard Interfaces	Ethernet (10/100BaseTX), USB2.0
Optional Interfaces	Parallel, Wireless LAN (IEEE802.11a/g) Bluetooth, Ethernet 1000 Base-T
Network Protocol	TCP/IP, IPX/SPX, Apple Talk
Operating Systems	Windows: 2000/XP/Vista/Server 2003, Server 2008, Netware: 3.12, 3.2, 4.1, 4.11, 5.0, 5.1, 6, 6.5. Unix, Sun Solaris, HP-UX, SCO OpenServer, RedHat Linux, IBM AIX. MAC: OS 8.6 - 9.2x, OS X 10.1 or later
Print Drivers	PCL5c, PCL6, XPS (standard), Adobe PS3 (optional)
Max Print Resolution	Up to 1200 dpi

SCANNER SPECIFICATIONS

Scanning Resolution	Up to 600 dpi
Scan Area	Up to 11" x 17"
Scan Speed	Simplex B/W 82 ipm/Duplex B/W 125 ipm; Simplex Color 70 ipm/ Duplex Color 115 ipm
Compression	BW/Binary - TIFF MH/MR/MMR Full Color/Grayscale: JPEG
Standard Interfaces	10/100BaseTX, Wireless LAN
Scanner Features:	
BW/FC Photo, BW/FC Text, Auto Color, Auto Density, Image Rotation, Mixed Size, SADF, Batch. Scan-to Modes Supported: Scan-to-Email, Scan-to-Folder, Scan-to-URL, TWAIN Scanning, USB/SD2.0 Scan-to	

DOCUMENT SERVER SPECIFICATIONS (STANDARD)

Max. Stored Documents	3,000
Max. Pages per Document	3,000
Max. Stored Pages	15,000

www.savin.com

Bringing Savin Value to Your Organization

Savin technology offers a diverse portfolio of solutions to help your organization stay competitive and move ahead. Let Savin show you how to empower your business to improve critical processes, keep information secure, ensure compliance and promote environmental sustainability while reducing the total cost of ownership.

FAX SPECIFICATIONS (OPTIONAL)

Circuit	PSTN, PBX
Compatibility	ITU-T (CCITT) G3, Additional G3 opt.
Resolution	200 x 100/200 dpi (400 dpi w/opt. SAF memory)
Compression Method	MH, MR, MMR, JBIG
Scanning Speed	0.7 sec.
Modem Speed	33.6 K - 2,400 bps
Transmission Speed	G3: Approx 2 sec.
Memory Backup	1 hour
Quick/Speed Dials	2,000 numbers
Group Dials	100 groups (500 per group)
Energy Saver	Standard

ACCESSORIES

RT4000 DLT/LCT	
Paper Capacity	2,000 sheets
Paper Size	up to 12" x 18"
Paper Weight	14 lb. - 110 lb. Cover (300 g/m ²)
Size	38.1" x 28" x 29.3"
Weight	192 lbs.
RT43/LCT	
Paper Capacity	4,000 sheets
Paper Size	8.5" x 11"
Paper Weight	14 lb. - 34 lb. Bond (128 g/m ²)
Size	12" x 18" x 26"
Weight	44 lbs
CS391 9-Bin Mailbox	
Number of Bins	9
Stack Capacity of Bins	100 sheets
Paper Size	5.5" x 8.5" - 11" x 17"
Paper Weight	14 lb. - 34 lb. Bond (128 g/m ²)
Size	21" x 24" x 26"
Weight	33 lbs.
2 Source Cover Interposer	
Paper Size	5.5" x 8.5" - 12" x 18"
Paper Weight	17 lb. Bond - 110 lb. Index (199 g/m ²)
Size	28" x 29" x 50"
Weight	99 lbs.
SR5000 100-Sheet Staple Finisher**	
Capacity (Proof Tray)	500 sheets (8.5" x 11" or smaller) 250 sheets (8.5" x 14" or larger)
Paper Size	5.5" x 8.5" - 12" x 18"
Capacity (Shift Tray)	8.5" x 11" - 3,000 sheets 8.5" x 14" - 11" x 17" - 1,500 sheets 12" x 18" - 1,000 sheets
Paper Weight	14 lb. Bond - 110 lb. Cover (300 g/m ²)
Staple	8.5" x 11" - 100 pages 8.5" x 14" - 11" x 17" - 50 pages
Size	31" x 29" x 39"
Weight	165 lbs.
**SR5000 must include Finisher Adapter Type C.	
SR4030 50-Sheet Staple Finisher	
Capacity (Proof Tray)	250 sheets (8.5" x 11" or smaller) 50 sheets (8.5" x 14" or larger)
Paper Size	5.5" x 8.5" - 12" x 18"
Capacity (Shift Tray)	8.5" x 11" - 3,000 sheets 8.5" x 14" - 11" x 17" - 1,500 sheets
Paper Weight	14 lb. Bond - 110 lb. Cover (300 g/m ²)
Staple	8.5" x 11" - 50 pages 8.5" x 14" - 11" x 17" - 30 pages
Size	26" x 24" x 38"
Weight	119 lbs.
SR4040 Booklet Maker	
Capacity (Proof Tray)	250 sheets (8.5" x 11" or smaller) 50 sheets (8.5" x 14" or larger)
Paper Size	5.5" x 8.5" - 12" x 18"
Capacity (Shift Tray)	8.5" x 11" - 2,000 sheets 8.5" x 14" - 11" x 17" - 1,000 sheets
Paper Weight	14 lb. Bond - 110 lb. Cover (300 g/m ²)
Staple	8.5" x 11" - 50 pages 8.5" x 14" - 11" x 17" - 30 pages
Saddle Stitch Staple***	8.5" x 11" - 12" x 18" - 15 pages
Size	26" x 24" x 38"
Weight	139 lbs.
***Paper weight for saddle stitch stapling is 28 lb. Bond max.	

FD5000 Multi-Folding Unit

Compatible with SR5000 and SR4040 only.	
Folding Type:	
Single Sheet Mode: Z-Fold, Half-Fold/Print inside, Half-Fold/Print outside, Letter Fold-in/Print inside, Letter Fold-in/Print outside, Letter Fold-out, Double Parallel/Print inside, Double Parallel/Print outside, Gate-Fold/Print inside, Gate-Fold/Print outside.	
Multiple Sheets Mode: same as Single Sheet mode; up to 3 sheets.	
Paper Size:	
Single Sheet Mode: Z folding: 8.5" x 11" - 12" x 18"; Half folding: 8.5" x 11"; Letter folding: 8.5" x 11" - 12" x 18"; Double Parallel/ Gate folding: 8.5" x 11" - 12" x 18"; Multiple Sheets Mode: Half folding: 8.5" x 11" - 12" x 18"; Letter folding: 8.5" x 11"; Double Parallel/Gate folding: 8.5" x 11" - 12" x 18"	

GBC StreamPunch III

Paper Size	8.5" x 11" LEF
Paper Weight	20 lb. Bond - 110 lb. Index (216 g/m ²)
Die Sets	CombBind®, Twin Loop Wire (2:1 or 3:1), ColorCoil®, VeloBind®, Three-Ring, ProClick®

BK5010e Production Booklet Maker

Paper Size	8.5" x 11" - 11" x 17"
Paper Weight	16 lb. Bond - 110 lb. Index (216 g/m ²)

Ring Binder RB5000

Paper Sizes Supported	8.5" x 11" (LEF only)
Max. Binding Capacity	100 sheets/booklet
Ring Sizes Supported	50-sheet/100-sheet
Paper Weight Punched	17 lb. Bond - 80 lb. Cover (216 g/m ²)
Paper Weight Bound	17 lb. Bond - 80 lb. Cover (216 g/m ²)
Dimensions (WxDxH)	34.25" x 28.7" x 38.5"
Power Requirements	110/115V, 50/60Hz
Weight	319.6 lbs.

ADDITIONAL ACCESSORIES

Single Source Cover Interposer Type 3260; Punch Unit for SR5000; Punch Unit for SR4030/4040; Jogger Option for 4030/4040; Legal Tray for RT43 LCT Type 1075; 11" x 17" Tray Type 2105; Copy Connector Kit Type 3260; Tab Sheet Unit Type 3260; File Format Converter Type E; HDD Overwrite Security Kit Type H; HDD Encryption Unit Type A; Copy Data Security Kit Type F; Adobe PostScript3 Type C7501; IEEE802.11a/g Type J; IEEE1284 Type A; Bluetooth Interface Unit Type 3245; Browser Unit Type E; G3 Interface Kit Type C7500; Key Counter Bracket Type 1027; Reader Key Card Bracket Type B; Key Card I/F Unit Type A; Gigabit Ethernet Type B; Copy Tray Type 2075; FAX Memory Unit Type B 32MB, USB2.0/SD Slot Type D	
---	--

FIERY E-7200 SPECIFICATIONS

Controller Type	Embedded Type
Fiery Platform	Fiery E20
Maximum Continuous Print Speed	C9065: 65 ppm B/W, 60 ppm color C9075: 75 ppm B/W, 70 ppm color
CPU	Intel Core Duo T2500 2.0GHz
Host Interface	1000/100/10BASE-T
Memory	1GB
Internal HDD	80GB
Operating System	Linux
Network Protocol	TCP/IP (IPv4/IPv6), AppleTalk (Auto switching), SMB

Printer Description	Adobe PostScript 3, PCL6/5c
Language	
Max Print Resolution	Up to 1200 dpi
Max Scan Resolution	Up to 600 dpi
Fonts	PS3: 138 fonts/PCL: 80 AGFA fonts
Operation Panel	On MFP
Utilities	Standard: CommandWorkStation 5, Color Wise Pro Tools, Fiery Scan, Printer Delete Utility, Fiery Web Tools Optional: SeeQueue Impose, Color Profiler Suite (UV version), Auto Trapping, Spot-On, Hot Folders
Color Management Tools	ICC Profile, Color Chart, CMYK Color Reference Pages, RGB Color Tests, Trapping Support, ColorWise Pro Tools Color Cal, Densitometer, Spectrophotometer
Calibration	

For maximum performance and yield, we recommend using genuine Savin parts and supplies.

