

Want superb color images fast?
Wait no longer.



e-STUDIO211c
e-STUDIO311c

TOSHIBA
Don't copy. Lead.



Toshiba presents the finest color systems. **AND THEN SOME.**



Produce brilliant, crisp color presentations in record time using the new e-STUDIO211c/311c Series from Toshiba.

Thanks to Toshiba, businesses can now take advantage of high-volume, high-speed color without sacrificing image quality. The e-STUDIO™ 211c/311c Series delivers ultra high-speed color printing and copying with industry-leading image quality. Using Toshiba's revolutionary color imaging technology and the latest Fiery® technology, the e-STUDIO211c/311c offers vibrant 21 and 31 full-color copies and prints per minute (respectively).

The e-STUDIO211c/311c Series boasts ultra-fast color printing and copying because of its ability to handle large amounts of complex color data at high speeds. The Toshiba Color Inline Printing System achieves high-speed color copying with efficiency, image stability and superb reliability using an innovative four drum tandem engine.

TECHNOLOGY THAT EXPRESSES ITSELF BRILLIANTLY.

With Toshiba's advanced technology, the e-STUDIO211c/311c Series offers fast, quality printing and then some. It utilizes a unique

belt fusing method for an impressive warm-up time of approximately 4 minutes and an accelerated first copy delivery time of just 9.5 seconds.

In order to efficiently produce high-volume printing and copying, day in and day out, the e-STUDIO211c/311c makes available 4,030 sheets from up to six sources. Professional looking catalogs, brochures and spec sheets as well as product labels and presentation materials can be produced quickly and effortlessly. An edge-to-edge reproduction of ledger-sized documents is achieved with 12" x 18" full bleed paper capabilities. Also, you can use a variety of paper stocks, from heavy 158 lb. index stock to AquaAce™ waterproof gloss paper.

The e-STUDIO211c/311c Series is a complete business color system offering great network connectivity, making it the perfect solution for mid to high-volume business environments, print-for-pay facilities and professional graphics departments. It's high-speed, high-volume, and high-quality—only from Toshiba.



FAST
Blazing speeds of 21/31 Pages Per Minute in both Color and Black & White.



EFFICIENT
Toner Cartridges designed for simple replenishment and high productivity reduce downtime and maintenance.





An easy-to-use control panel includes a convenient touch screen as well as buttons for frequently used functions.



A resolution of 600 x 600 dpi with 256 gradations per color provides superb image quality at 21/31 PPM.

Color that's above industry standards and beyond your expectations.



With brilliant, eye-catching color at ultra-fast speeds, the sky's the limit.

Take advantage of a variety of paper stocks, from heavy 158 lb. index stock to AquaAce™ waterproof gloss paper.



BRILLIANT

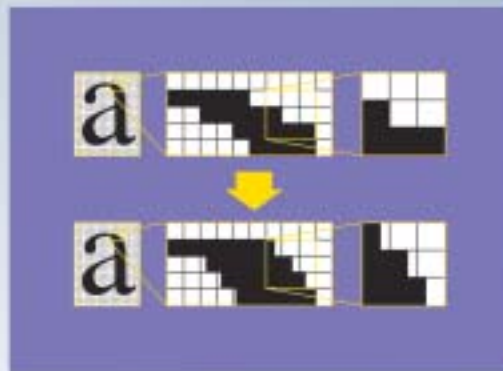
ColorWise® architecture is used for RGB data to CMYK conversion to achieve optimum color matching when printing.



Brilliant technology leads to **BRILLIANT COLOR.**

Whether you're a Fortune 1000 company, graphic design firm, or print production house, you can't help but be struck by the crisp, vibrant color of Toshiba's e-STUDIO211c/311c Series.

Working in tandem with the latest Fiery® technology, these advanced multifunction peripherals offer striking resolution—600 x 600 dpi with 256 gradations for each color.



Scalable Smoothing Technology delivers superb image quality and assures razor sharp text.

The Toshiba e-STUDIO211c/311c Series incorporates Toshiba's proprietary DCIT (Dual Compression Imaging Technology) which compresses scanned color images in two stages and significantly increases color data processing speed.



The e-STUDIO211c/311c Series is both designed with a straight paper path that results in less paper jams and increased image stability.

VERSATILE

Sophisticated finishing capabilities like the 4 Position Stapler, Hole Punch and Saddle-Stitch Finisher give you the versatility you need.



CAPABLE

With two 600-Sheet Cassettes and a 1,500-Sheet LCF (Large Capacity Feeder) available as options, big jobs are no problem.



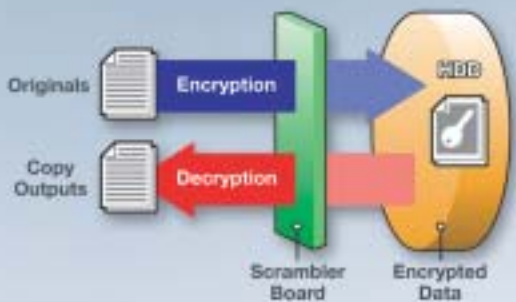
LOADED WITH FEATURES FROM START TO FINISHING.

Capable of handling immense amounts of complex color data at high speeds, the Toshiba Inline Color Printing System efficiently delivers high-speed copying without sacrificing image stability. In addition, its innovative Four-Drum Tandem Engine is superbly reliable.

To vibrant color and extraordinary speed, the e-STUDIO211c/311c Series adds the power of high-volume printing and copying. Utilizing as many as six sources makes an impressive 4,030 sheets available for use in professional looking catalogs, brochures, and spec sheets.

A long list of features makes the e-STUDIO211c/311c Series unusually versatile. These include the Magazine Sort Printing feature, which allows you to alter the page sequence automatically, so documents can be printed in book format, then compiled with ease later. Thanks to an optional saddle stitch finisher, anyone can routinely produce professional-caliber booklets. The built-in Photo Zoom function automatically enlarges or reduces photographs from a wide variety of standard photo sizes to any pre-set size at the touch of a button.

In addition to offering all these great features, the e-STUDIO211c/311c Series makes them easy to manage. For example, Full-Color and Print Volume output control allows administrators to control usage, manage accounts, and reduce total cost of ownership. Managing toner is easier, as well, since the Toner Refill Alert feature alerts you that the toner is low, so you can refill it before it's empty, thereby reducing down time.



For maximum security, an optional scrambler board encrypts data when it is written on the hard disk inside the MFP, then decrypts it, when it is read from the hard disk.



PRODUCTIVE

With the e-STUDIO 211c/311c Series creating professional-looking booklets is a snap. Use the Auto Duplexing Unit and Saddle-Stitch Finisher to give your communications new life.

FEATURES

Access Code (120 Types)
APS/AMS, Interrupt
Auto Clear
Auto Job Start
Book Center Erase
Centering
Dual Page Copying
Edge Erase
Finisher
Finisher with Saddle-Stitch Capacity
Hole Punch Unit
Image Repeat
Image Shift
Language Switch
Large Capacity Feeder (LCF)
Magazine Sort
Mirror Image
Mode Memory
Mono Color (10 Colors)
Negative/Positive Reverse
Photo Mode
Reduction/Enlargement (25 to 400%)
Reversing Automatic Document Feeder (RADF)
Trimming/Masking
Weekly Timer
X-Y Zoom

OPTIONS

Toshiba offers two types of Printer Controllers incorporating the latest Fiery® technology from Electronics for Imaging (EFI):

The GA-1131 (Fiery® S300) is a powerful external Print Controller designed for maximum throughput speed and sophisticated color control.

The GA-1121 (Fiery® X3e+) is a built-in Print Controller optimized for the corporate environment, offering a perfect balance of speed and affordability.

An optional Scrambler Board further protects data stored in the hard drive with industrial strength encryption using 128 Bit technology.



e-STUDIO 311c

POWER TO PERFORM

- Professional color quality
- Seamless network connectivity
- Productivity-enhancing tools
- Expanded document imposition features
- Expedient internet printing and management via email
- Convenient network access to locally stored scans

e-STUDIO 211c



SMART

Department management lists provides you with a detailed printout of the printing activities of each department, allowing you to identify where to limit output, setting Black & White and Color access limitations to increase savings.



SOPHISTICATED

The GA-1131 (Fiery® S300) Print Controller is equipped with the latest EFI controller technology. This incorporates a high-speed multi-processor, expansive hard disk drive, and high-speed network interface designed for maximum throughput speed and sophisticated color control.

The power to connect with your **CREATIVITY.**

FIERY® SYSTEM 5.5

EFI's Fiery® System 5.5 software gives mid-range print environments the flexibility to expand. By including variable data printing capabilities (S300 only), along with applications for color management, networking, scanning, and remote job management, Fiery® System 5.5 makes it even easier to create, print, scan and manage print jobs.

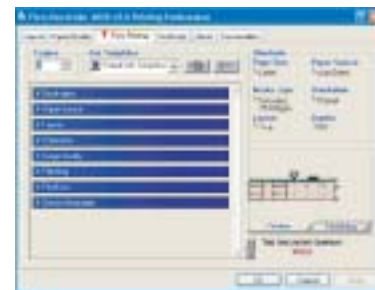
Fiery® Scan™

Fiery® Scan™ incorporates the Fiery® controller as a key element of network and distribution scanning. Scans can be initiated remotely, or at the Fiery®, and stored on a local hard drive. Users can then distribute the scans in any of several ways: via FTP, Internet fax or email. Or download the file directly to the Fiery® Hold queue to build documents, and save the scanned file directly to a PC. Scans can also be retrieved via the Fiery® Webtools™ utility, local Fiery® interface or TWAIN plug-in.



EFI Fiery® Driver® 2

For end users, setting up, submitting and monitoring a print job is a snap, thanks to Fiery® Driver 2's single, intuitive interface. With its ability to customize and save print settings, preview VDP master data (S300 only) and monitor print jobs through to completion, Fiery® Driver 2 makes job submission and printing incredibly efficient.



Variable Data Printing Support

The Fiery® S300 provides the industry-leading platform for fast variable data printing. Choose any authoring tool

and create static and variable elements with EFI's flexible and open, end-to-end variable data solution. EFI's solution is compatible with the most comprehensive array of VDP languages, including Fiery® FreeForm, PPML, and a host of proprietary languages.



FRIENDLY

Toshiba is helping improve the world outside your office by scaling down the use of chemicals that are harmful to the environment. Which is why approximately 50% of the base materials of the e-STUDIO211c/311c's printed circuit board contain no halogen, and more than 70% of the printed circuit board is constructed using lead free solder.

The Toshiba e-STUDIO211c/311c reduces power consumption with a range of Auto-Shut-Off.



STANDARD MODEL	
Copying Process	Digital Electrostatic Photographic Method (Dry Process)
Copying System	Toshiba Color Inline Printing System: Scan Once/Print Many, Dual Compression Imaging Technology, 4-Beam Laser Unit, Single Pass 4-Drum Tandem Design
Copy Resolution	9,600 x 600 dpi Equivalent Marking Engine; 256 Gradations
Scan Resolution	600 x 600 dpi; 1,024 Gradations
Type	Console
Copy Speed (e-STUDIO211c)	21 CPM Letter (Color)/31 CPM (Black & White)
Print Speed (e-STUDIO211c)	21 PPM (Color)/31 PPM (Black & White) (with Optional Fiery® Controller)
Copy Speed (e-STUDIO311c)	31 CPM (Color/Black & White)
Print Speed (e-STUDIO311c)	31 PPM (Color/Black & White) (with Optional Fiery® Controller)
First Copy Out Time*	9.5 Seconds
Warm-up Time	4 Minutes
Multiple Copying	Up to 999 Copies
Reduction/Enlargement	25% to 400%
Maximum Original Size	Ledger
Minimum & Maximum Paper Size	Cassette: Ledger/Statement-R (17 lbs. Bond-90 lbs. Index) (Letter OHP) Stack Feed "Smart" Bypass: 12" x 18", Statement-R (up to 158 lbs. Index) Large Capacity Feeder: Letter (17 lbs. Bond-90 lbs. Index)
Maximum Paper Capacity	4,030 Sheets. Cassette: 4 x 600 = 2,400 Large Capacity Feeder: 1,500 Stack Feed "Smart" Bypass: 130
Displays	LCD that Displays Interactive Screens with Touch Sensitive Keys for Making Copy Job Selections
Color Modes	Auto Color Selection Mode, Full Color Mode, Black Mode
Color Image Adjustment	Hue Adjustment, Saturation Adjustment, Color Balance Adjustment, RGB Adjustment, Sharpness Adjustment, Background Adjustment, One Touch Adjustment, Mono Color Adjustment
Dimensions (H x W x D)	39.4" x 34.2" x 29.6"
Weight	Approximately 413 lbs.
Power Supply	120 Volts, 20A
Power Consumption	Maximum 2.0 kW
Photoconductor	Organic Photoconductors (4-Drums)
Maximum Monthly Duty Cycle	40,000 Pages (e-STUDIO211c), 60,000 Pages (e-STUDIO311c)

*Single copy via glass from upper Letter cassette without prescan function.
Designs and specifications subject to change without notice. For best results and reliable performance, always use supplies manufactured or designated by Toshiba. Not all options and accessories may be available at the time of product launch. Please contact a local Authorized Toshiba Dealership for availability. Toner yields are estimates, based on 6% coverage, letter-size page. Driver and connectivity feature support varies by client/network operating system.



Corporate Office: 2 Musick, Irvine, California 92618-1631
East Coast: 959 Route 46 East, 5th Floor, Parsippany, New Jersey 07054
 Tel: 973/316-2700 Fax: 973/263-2393
Midwest: 8770 W. Bryn Mawr Avenue, Suite 700, Chicago, Illinois 60631
 Tel: 773/380-6000 Fax: 773/380-8077
South: 4855 Peachtree Industrial Blvd., Suite 210, Norcross, Georgia 30092-3024
 Tel: 770/209-8540 Fax: 770/209-8556
West Coast: 142 Technology, Suite 150, Irvine, California 92618
 Tel: 949/462-6262 Fax: 949/462-2700
Web Site: www.copiers.toshiba.com or www.fax.toshiba.com
 © 2004 Toshiba America Business Solutions, Inc., Electronic Imaging Division
 e-STUDIO211c/e-STUDIO311c Brochure/Inv. Code ES2113111

OPTIONS	
Fiery® S300 Controller GA-1131	
Processor	Intel® Pentium® IV 2 GHz
Memory (RAM)	256 MB (Standard), 768 MB (Maximum)
Hard Disk	60 GB
Printing Resolution (Color, B/W)	600 x 600 dpi
Gradation	256 Steps
Printing Speed (Color, B/W)	31PPM LT
Printer Drivers	Windows® 98, Me, Windows® NT 4.0, 2000, XP, Server 2003 (32 Bit), Macintosh® OS 9.0-10.2.x
Browser	Internet Explorer 5.x or Later, Netscape Communicator 4.7x or Later
Network Interface	10BaseT, 100BaseTX, 1000BaseT (RJ45)
Network Protocol	TCP/IP, IPX/SPX, AppleTalk®
PDL	Adobe® PostScript® 3™, PCL6c®

Fiery® X3e+ Controller GA-1121	
Processor	Intel® Pentium® III 850 MHz
Memory (RAM)	256 MB (Standard), 512 MB (Maximum)
Hard Disk	10 GB
Printing resolution (Color, B/W)	600 x 600 dpi
Gradation	256 Steps
Printing Speed (Color, B/W)	31PPM LT
Printer Drivers	Windows® 98, Me, Windows® NT 4.0, 2000, XP, Server 2003 (32 Bit), Macintosh® OS 9.0-10.2.x
Browser	Internet Explorer 5.x or Later, Netscape Communicator 4.7x or Later
Network Interface	10BaseT, 100BaseTX, (RJ45)
Network Protocol	TCP/IP, IPX/SPX, AppleTalk®
PDL	Adobe® PostScript® 3™, PCL6c®

OTHER OPTIONS

MR-3006A Reversing Automatic Document Feeder (RADF)	
Automatic Mode	Stack of up to 50 Letter/Letter-R Size Originals, 25 Sheets Legal or Ledger Size Originals (20 lbs.)
Reversing Mode	Automatically refeeds Two-Sided Originals for One-Sided Copying or Two-Sided Copying

MD-5007 Automatic Duplexing Unit	
Media Size	Statement-to-Ledger (17-28 lbs.)

MP-1503LT Large Capacity Feeder	
Paper Supply	1,500 Sheets
Paper Size	Letter (17 lbs. Bond-90 lbs. Index)

MJ-1020 Saddle-Stitch Finisher	
Paper Size	Ledger-to-Statement-R (Staple: 28 lbs., Non-Staple: 140 lbs. Index)
Tray Capacity	1st Bin: 1,000 Sheets (LT, ST-R), 500 Sheets (LT-R, LG, LD); 2nd Bin: 1,000 Sheets (LT, ST-R), 500 Sheets (LT-R, LG, LD)
Cascade	Yes
Offset	Yes
Staple Capacity	50 Sheets (LT), 30 Sheets (LT-R, LG, LD)(20 lb.)
Saddle-Stitch Paper Size	LD, LT-R; Staple Capacity: 15 Sheets (17-20 lbs.)

MJ-1019 Finisher	
Paper Size	Ledger-to-Statement-R (Staple: 28 lbs., Non-Staple: 140 lbs. Index)
Tray Capacity	1st Bin: 1,000 Sheets (LT, ST-R), 500 Sheets (LT-R, LG, LD); 2nd Bin: 1,000 Sheets (LT, ST-R), 500 Sheets (LT-R, LG, LD)
Cascade	Yes
Offset	Yes
Staple Type	Multi-Position (4 Kinds)
Staple Capacity	50 Sheets (LT); 30 Sheets (LT-R, LG, LD)(20 lb.)

MJ-6001N Hole Punch Unit (Option for MJ-1019/1020)	
Type	2 or 3 Holes

MY-1020 Cassette Module	
Paper Supply	600-Sheet Cassettes
Paper Size	Statement-R-to-Ledger (17 lbs. Bond-90 lbs. Index)

AUTHORIZED TOSHIBA DEALER