

e-STUDIO™ 2500c/3500c/3510c

Created for
BUSINESS,
focused on
COLOUR



TOSHIBA



Where Text and Colour

CONVERGE

Which would you prefer: Professional colour or unrivalled text and images? Why not both?

The e-STUDIO2500c/3500c/3510c multifunction print/copy/scan/fax (MFP) devices utilize a state-of-the-art, printer-centric engine developed exclusively by Toshiba's imaging experts. The result is a full-colour workhorse that's perfect for users who demand unparalleled business productivity, full-colour scanning and razor-sharp printing.

You Win Some, You Win Some More

It's true that all colour copiers provide black and white capabilities. But not all colour copiers offer the kind of crisp, detailed black and white that you need for a sophisticated, professional finish. Fortunately, with the optional EFI controller, the e-STUDIO2500c/3500c/3510c offers powerful colour management controls, variable data printing and graphic arts options that are a must for demanding business or graphics environments.

Sharper Images, Unrivalled Quality

The overall colour superiority is supported by several new Toshiba technologies that provide superior colour registration. Also, the e-STUDIO2500c/3500c/3510c are designed to support proprietary Toshiba toner that offers smoother reproduction of photos and halftones, and excellent colour fidelity and quality. Additionally, all three devices boast a breakthrough feature that enables the devices to create sharp, accurate text along with vibrant, professional-quality colour reproduction.





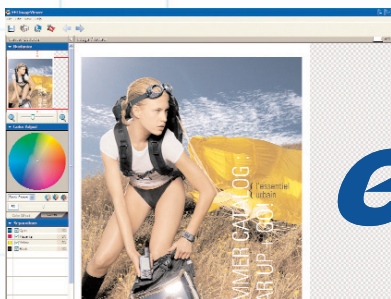
e-BRIDGE

All-in-one Single Board Architecture

Unparalleled image quality and performance is a direct benefit of Toshiba's proprietary, on-board 8-bit controller. The controller features a PowerPC 867 MHz processor, 1 GB max memory and 80 GB serial ATA hard disk.

High-Precision Micro-Discrimination

The e-STUDIO2500c/3500c/3510c automatically distinguishes between text, graphics and line art on the same page. The result is rich image and colour reproduction with true blacks and deep colours.

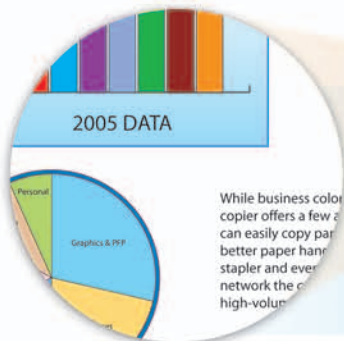


efi™



Watch your productivity skyrocket with the optional EFI Fiery System 8e Controller

For outstanding performance, seamless network integration, and unrivalled colour quality in a variety of print environments, count on the Fiery System 8e Embedded Controller as a powerful document workflow solution for any task.



While business color copier offers a few advantages, it can easily copy paper, better paper handling, stapler and even network the copier. high-volume

Innovative Toshiba Toner

See the difference with our new low-temperature fuser colour toner that offers smoother reproduction of photos and halftones with excellent colour fidelity.

When it's time to get down to business Looking for business-building innovation?

First on the list of new developments is an all-in-one, net-ready architecture, providing the most cost-effective colour copying, printing and scanning capabilities available today. Ready to go, right out of the box, these multifunction devices deliver standard network or optional wireless connectivity so that you can put them anywhere in your workgroup. They're also amazingly easy to use.



It's All About Control

The full-colour VGA control panel is not only a thing of beauty, it balances intuitive control with an inviting interface. In the end, you'll get more done, more quickly.

Stay Productive

The e-STUDIO2500c/3500c/3510c feature an ergonomically designed control panel that makes the most complex task a snap. Timesaving templates make routine jobs as easy as walking up and pushing a button. Big print jobs are further simplified by a tilting VGA colour control panel featuring large, easy-to-read text as well as an interactive copier diagram that displays all functions from paper configuration to copier status.

Competitive pricing, Energy Star compliance, first-copy-out time of 8.6 seconds (in colour) and complete warm-up in 99 seconds—together these make the e-STUDIO2500c/3500c/3510c worthy choices for every environment. Factor in their world-class colour capabilities and you could argue that they're the only choice.



Large PDFs? No Problem!

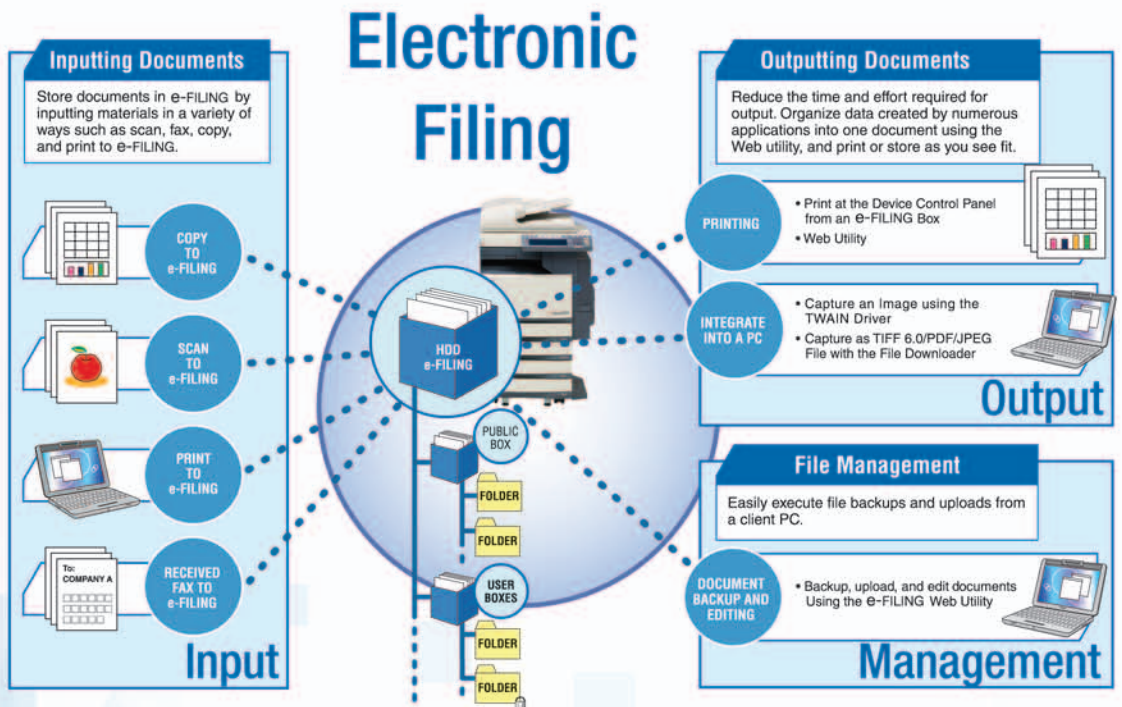
Toshiba's Slim PDF feature shrinks file sizes for faster network throughput while maintaining graphics image quality.





Simplified Document Storage And Retrieval

Toshiba's proprietary e-FILING feature makes it easy to store frequently used documents for simplified retrieval and printing as well as data distribution to multiple destinations.



Flexible Paper Capacity

Sure, the e-STUDIO2500c/3500c/3510c can handle colour, but what about paper? All three devices come standard with two 550-sheet universal cassettes and a 100-sheet bypass tray. You also have the option of adding two additional 550-sheet cassettes, or a 2,500-sheet tandem large-capacity feeder for a maximum paper capacity of 3,700 sheets from up to five different paper sources.

One For All, All For One

For more flexibility, e-STUDIO2500c/3500c/3510c are network, print and scan ready, right out of the box. All three units come complete with the Toshiba e-BRIDGE 8-bit hardware platform allowing the devices to print and scan, print and fax, even copy and scan – all at the same time. This unified design shares system resources to control multiple functions simultaneously.

eCopy ScanStation OP V3.0

Leverage flexible, rapid solutions for paper-to-digital business integration. eCopy ScanStation OP document imaging and distribution software transforms your e-STUDIO2500c/3500c/3510c into full-featured information hubs. It integrates hardcopy documents directly into the workflow of critical business processes—reporting, administration, document management, financials, human resources and customer management. Additionally, easy-to-use administration tools let you manage multiple devices from one central location.

RE-RITE™

Convert scanned documents into 16 file formats with the touch of a button. Instant Optical Character Recognition (OCR) file format transforms hardcopy text and graphic documents into easily editable file formats including .doc, .html, .pdf and more. This innovative technology automatically performs OCR and file conversions. Converted images can then be sent to network drives, Email or both.

Good For You, Good For The Earth

Toshiba is committed to making the world a better place by scaling down the use of chemicals that are harmful to the environment. Which is why approximately 50% of the base materials of the our printed circuit boards contain no halogen, and more than 70% of the printed circuit board is constructed using lead-free solder. Additionally, the e-STUDIO2500c/3500c/3510c are Energy Star compliant and offer energy saver mode and a sleep mode to reduce power consumption when not in use.

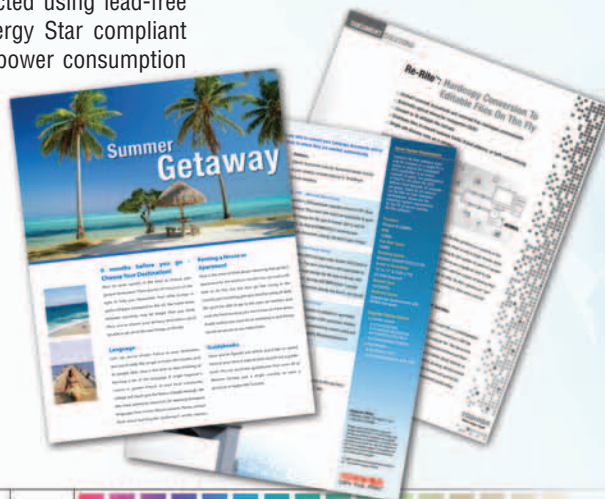
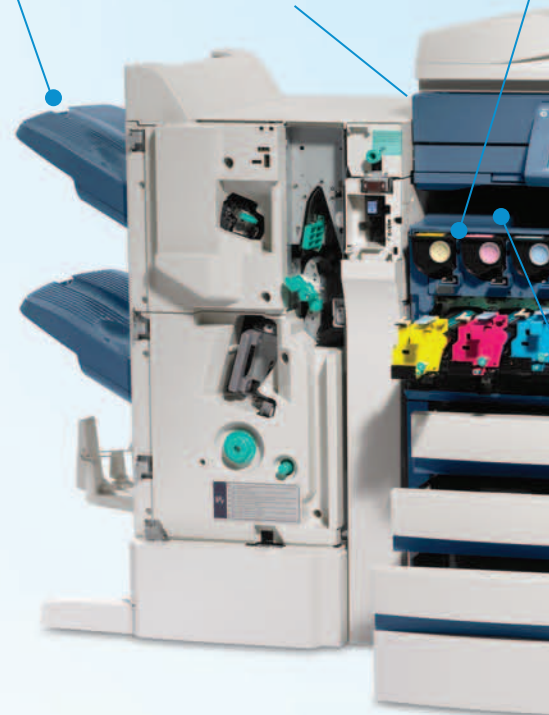
See For Yourself – In Living Colour

If you're interested in finding out more about how the e-STUDIO2500c/3500c/3510c are the single source for professional colour and crisp black and white, visit us online at www.toshiba.ca, or call your local Authorized Toshiba Dealer.

Professional document finishing includes stapling, hole punch and saddle-stitch

Standard hard-disk AES encryption for added data security

Easily P
(ERU) d
on serv
maximi



Heightened Security

Along with productivity and performance, today's businesses are becoming more and more concerned about security.

The e-STUDIO2500c/3500c/3510c offer 128-bit data encryption as a standard feature – ensuring vital data remains protected by employing the next-generation Advanced Encryption Standard (AES).

Replaceable Units design saves money on toner and drum costs and reduces downtime

Set permissions for colour printing and copying either by department or individually to track and manage costs

Tilting, colour half VGA control panel is 508 compliant and increases visibility, making the devices easier to use and access

A Stackless Automatic Duplexing Unit (ADU) comes standard, helping reduce paper costs by easily handling two-sided originals

Single-pass, intermediate transfer belt

The devices can handle up to 3,700 sheets of paper from up to five sources

A compact design with inner space exit tray saves valuable space

Copy Features

- > Single-pass, four-drum, tandem colour engine
- > Print speeds up to 35 PPM colour, 45 PPM black
- > 600 x 600 dpi resolution
- > FCOT: 6.5 seconds for black (5.2 seconds for 3510c), 8.6 seconds for colour
- > 99 seconds warm-up time
- > Preventive Maintenance 50,000/70,000/70,000
- > Colour image quality optimized for general office and professional graphics
- > 508 compliant, tilting colour control panel
- > Environmentally friendly, Energy Star compliant
- > ERU: Easily Replaceable Units

Printer Features

- > Power PC 867 MHz processor
- > PCL5c, PS3 (clone), PCL6
- > 10/100BaseT Ethernet interface
- > IEEE 802.11b/g wireless printing
- > Point & Print
- > Private, proof, scheduled and stored print
- > New Unified Toshiba Print Driver

Fax Features

- > Super Group 33.6KBPS
- > JBIG Compression
- > Optional 2nd line
- > Internet Faxing (T.37)
- > Incoming fax routing: Sent-to File/Email/Internet

Scan Features

- > Scan speeds up to 40 SPM colour, 50 black
- > 600 dpi B&W and colour resolution
- > JPEG, TIFF and PDF file formats
- > Scan-to-File/Email/FTP
- > Control panel LDAP support
- > Unified Address Book

EFI Fiery® Controller GA1210 Features

- > Processor Intel® Celeron® 2 GHz
- > Memory (RAM) 256 MB (Standard), 1 GB (Maximum)
- > Hard Disk 80+ GB or Larger
- > Printing Resolution (Colour, B&W) 600 x 600 dpi
- > Gradation 256 Steps
- > Windows NT 4.0, 2000, XP
- > Network Interface 10BaseT, 1000BaseTX, (RJ45)
- > Network Protocol TCP/IP, IPX/SPX, AppleTalk®
- > PDL Adobe® PostScript® 3™, PCL6c®
- > EFI Fiery Driver
- > Command WorkStation
- > EFI Fiery WebTools™
- > Fiery ColorWise®
- > Fiery FreeForm™
- > EFI Graphic Arts Package

e-STUDIO™2500c/3500c/3510c SPECIFICATIONS

The Toshiba e-STUDIO2500c/3500c/3510c are powerful, multifunction colour copiers that combine the performance of a multifunction system with the quality of a professional graphics solution. Outstanding speed, performance, and professional-quality colour as well as detailed text and graphics can be yours – everyday, all the time. Thanks to Toshiba proprietary print technology, the e-STUDIO2500c/3500c/3510c devices are the ideal, cost-effective graphic/business solution for even the busiest office and pay-for-print environments.

Multifunction COLOUR



SPECIFICATIONS

Copying Process	4-Drum Electrostatic Photographic Transfer System with Internal Transfer Belt
Copying Type	4-Beam Colour Laser (8 bit)
Copy/Print Resolution	600 x 600 dpi (2400 x 600 dpi B&W equivalent)
Copy/Print Speed	e-STUDIO3510c – 35 PPM Colour / 45 PPM B&W e-STUDIO3500c – 35 PPM Colour / 35 PPM B&W e-STUDIO2500c – 25 PPM Colour / 35 PPM B&W
Warm-Up Time	Approx. 99 Seconds
First Copy Out Time	Less than 6.5 Sec. B&W (5.2 Sec. for 3510c), 8.6 Sec. Colour
Duty Cycle	e-STUDIO3510c – 70,000 Copies e-STUDIO3500c – 70,000 Copies e-STUDIO2500c – 50,000 Copies
Multiple Copying	Up to 999 Copies
Acceptable Paper Size and Weight	Cassette: ST-R to LD (17 lbs. Bond - 90 lbs. Index) Bypass: ST-R to 12" x 18" (17 lbs. Bond - 140 lbs. Index) LCF: LT (17 lbs. - 28 lbs. Bond)
Processor	Power PC 867 MHz Shared
Memory (Min/Max)	Main Memory: 512 MB / 1 GB Page Memory: 256 MB / 512 MB HD: 80 MB
Reduction/Enlargement	25% to 400%
Bypass	100-Sheet "Smart" Bypass (17 lbs. Bond - 140 lbs. Index)
Control Panel	Colour Half VGA Tilttable LCD Touch Panel
Paper Supply	Up to 3,700-Sheet Input Capacity Standard: 2 x 550-Sheet Cassettes 100 Sheet Bypass Optional: 1 x 550-Sheet PFP, 1 x 550 Sheet Cassette 1 x 2,500-Sheet LCF
Duplex	Standard Trayless Automatic Duplex Unit
Dimensions (W x D x H)	Approx. 27.5" x 30.5" x 30" (699mm x 776mm x 759mm)
Weight	Approx. 265 lbs. (120kg)
PM Cycle	50,000/70,000/70,000
Drum Type/Yield	Organic Photoconductor / 50,000/70,000/70,000
CMYK Toner Yield	CMY: 21,000 / K: 24,000
Black Developer Yield	50,000/70,000/70,000
Power Supply	115 V, 15 Amps
Power Consumption	Maximum 1.5 kW

PRINT SPECIFICATIONS

PDL Support	PCL6 & PostScript 3
Operating Systems	Netware 4.x, 5.x, 6.x, Windows Me/2000/XP, Windows NT 4.0, Windows Server 2003, Citrix MetaFrame, Macintosh, Linux, UNIX
Protocol Support	IPX/SPX, TCP/IP, EtherTalk, AppleTalk, NetBIOS Over TCP/IP LPR/LPD, IPP, SMB, SNMP, Netware, Port 9100, Bluetooth (HCRP)
Drivers	Windows Me, 2000, Server 2003, XP, NT 4.0, Macintosh OS 8.6, 9.x, 10.1/10.2/10.3, UNIX, AS400 via iData & Port 9100, SAP R/3
Connectivity	10BaseT/100BaseTX Ethernet, 802.11b/g Wireless LAN, USB, Bluetooth (HCRP)
Device Management	TopAccess
Certification	WHQL, Novell

SCAN SPECIFICATIONS

Scan Resolution	150 dpi, 200 dpi, 300 dpi, 400 dpi, 600 dpi
Scan Speed	40 SPM Colour / 50 SPM B&W
File Format	TIFF, PDF, JPEG
Authentication	LDAP, SMTP

FACSIMILE SPECIFICATIONS

Compatibility	Super G3
Data Compression	MH/MR/MMR/JBIG
Transmission Speed	Approximately 3 Seconds Per Page
Fax Modem Speed	33.6 Kbps
Fax Memory	240 MB Transmission, 120 MB Reception
Memory Transmission	100 Jobs, 1,000 Destinations Max. 400 Destinations / Job
Scan Speed	.7 Seconds Per Page, 50 SPM

e-FILING SPECIFICATIONS

Operation Method	Colour Touch Screen Control Panel or Client PC
Number of Boxes	1 Public Box, 200 Private User Boxes
Capacity of Boxes	100 Folders Per Box, 400 Documents Per Folder 200 Pages Per Document

OPTIONS

MR-3018	RADF	100 Sheets
KD-1018	Paper Feed Pedestal	550-Sheet Pedestal, Statement-R to Ledger
MY-1031	Cassette Module	550-Sheet Drawer, Statement-R to Ledger
KD-1019LT	Large Capacity Feeder (LCF)	2,500-Sheet Drawer, Letter
MJ-1101	Multi-Position Finisher	Stationary Tray: 250 Sheets (Lt) Tray 1 Stack Capacity: 2,000 Sheets (Lt) Staple Capacity: 50 Sheets (Lt/Lt-R)
MJ-1030	Saddle-Stitch Finisher	Tray 1 Stack Capacity: 1,000 Sheets (Lt) Tray 2 Stack Capacity: 1,000 Sheets (Lt) Staple Capacity: 50 Sheets (Lt/Lt-R)
MJ-6101N	Hole Punch Unit	(for MJ-1101) 2- or 3-Hole Punch Capability
MJ-6004N	Hole Punch Unit	(for MJ-1030) 2- or 3-Hole Punch Capability
KN-3500	Bridge Kit	Required with MJ-1101, MJ-1030
GA-1210	EFI Controller	
GD-1210NA	Fax Board	
GD-1160NA	2nd Line Fax	
GN-1041	Wireless LAN Adapter	
GN-2010	Bluetooth Adapter	
GN-3010	Wireless Antenna	
GP-1060	Data Overwrite Kit	
GC-1250	Main Expansion Memory	
GC-1260	Page Expansion Memory	



TOSHIBA

TOSHIBA OF CANADA LIMITED
OFFICE PRODUCTS GROUP
DIGITAL COPIERS • FAX/MFP • BUSINESS COMMUNICATION SOLUTIONS

HEAD OFFICE: 191 McNabb Street, Markham, Ontario, Canada L3R 8H2 Tel: (905) 470-3500 Fax: (905) 470-3459
WESTERN REGIONAL OFFICES: 349-25th Street, Calgary, Alberta, Canada T2A 7H8 Tel: (403) 248-3883 Fax: (403) 248-3926
13551 Commerce Parkway, Suite 110, Richmond, British Columbia, V6V 2L1 Tel: (604) 303-2500 Fax: (604) 303-2501
EASTERN REGIONAL OFFICE: 18050 Trans Canada Hwy., Kirkland, Quebec, Canada H9J 4A1 Tel: (514) 390-7766 Fax: (514) 390-7770

<http://www.toshiba.ca>

PATZER

OFFICE EQUIPMENT **Setting the Pace**

COPIERS FACSIMILES PRINTERS TELEPHONES NETWORKING
1475 Dublin Avenue, Winnipeg, Manitoba, Canada R3E 3G8
Tel: (204) 786-7700 Fax: (204) 775-7662

<http://www.patzer.mb.ca>