

## ENGINE SPECIFICATIONS

Printing Process	Indirect electrostatic photographic method
Type	Console
Print & Copy Speed in colour	3100c: 31 ppm (A4); 2100c: 21 ppm (A4)
Print & Copy Speed in b/w	3100c: 31 ppm (A4); 2100c: 31 ppm (A4)
Original Scan Speed (col & b/w)	25 spm
Copy Preselection	1-999
First Copy Time (col & b/w)	Approx. 9.5 seconds (A4)
Warm-up Time	Approx. 240 seconds (20°C)
Printing Resolution / Gradation	600 x 600 dpi / 256 steps per process colour
Scanning Resolution / Gradation	600 x 600 dpi / 1,024 steps (10 bit)
Original Size	Maximum A3
Print & Copy Paper Sizes	Cassette: A3 to A5-R LCF: A4 Bypass: A3-wide (305 x 457 mm) to 100 x 148 mm
Print Void Area	Leading edge 5 mm, Trailing edge 2.5 mm, Side edges 2 mm
Paper Supply (80gsm)	Cassette: 600 sheets x 2 (standard) Cassette: 600 sheets x 2 (optional) LCF: 1,500 sheets (optional) Stack Feed Bypass: 130 sheets
Maximum Paper Online	4,030 sheets (80 gsm)
Paper Weights	Cassette: 64 - 163 gsm LCF: 64 - 163 gsm Bypass: 64 - 280 gsm
Image Memory	128 MB RAM 20 GB HDD Memory capacity: 200 sheet (400 pages) A3 size + Print Controller Memory (optional)
Magnifications	25 - 400% (1% increments) (up to 200% when using the RADF)
Density Control	Automatic/Manual (11 steps)
Power Requirements	Max 2.0kw, 220-240V, 50/60Hz
Dimensions (W x D x H)	868 x 750 x 997 mm
Weight	187 kg

## GA-1121 (X3e+) /GA-1131 (S300) Fiery Controllers (optional)

CPU	X3e+: Intel Mobile PIII @ 850 MHz S300: Intel Pentium 4 @ 2.0 GHz
Memory	X3e+: 256MB SDRAM x1 (Std), 512MB Max S300: 256MB SDRAM x 1 (Std), 1GB Max
Operating System	X3e+: Linux S300: Windows XP
Standard Hardware	X3e+: 20GB HDD S300: 60GB HDD internal CD/DVD ROM
Printer Languages	PCL6c, Adobe PostScript 3
Printer Drivers	Win98/ME/NT4.0/2000/XP/2003 PPD for Mac OS 10.x
Networking/Connectivity	Autosensing ports: RJ45 for on-board 10/100/BaseT/(1G BaseT with S300) X3e+: 10/100/BaseT (RJ45) S300: 10/100/1G BaseT (RJ45) Auto IP configuration: BOOTP, DHCP, RARP SNMP common Printer MIB AppleTalk PServer (8 connections) SMB LPD Port 9100 IPP (PS/PDF) 1.1 e-Mail Client e-Mail Print (PS/PDF)

## Utilities

Command WorkStation 4.1	Win 98/Me/NT4.0/2000/XP/2003
Command WorkStation LE	Mac 10.2.4 or later
Fiery FreeForm	Version 2.1
Fiery Scan	TWAIN Plug-in Scan to Mailbox Scan to E-mail Scan to Queue (for use with DocBuilder) Scan to I-Fax Scan to FTP Server
Fiery Downloader	For downloading PS/PDF/EPS files and fonts
Fiery Job Monitor	Dynamic system status reporting
Fiery WebTools	Remote management via std web browsers
Fiery ColorWise Pro Tools	Downloading and managing ICC sources, simulations and profiles Calibration with support for ColorCal, X-Rite DTP 32, DTP 41, ES-1000

## OPTIONS

<b>RADF (Rev. Auto. Document Feeder) MR-3006E</b>	
Original capacity (80gsm)	50 sheets (A4), 25 sheets (A3)
Original setting	Face up
Available original paper size & weight	A3 - A5-R, 64-105gsm
Dimensions (W x D x H)	597 x 494 x 120mm
Weight	Approx. 9.5kg
<b>ADU (Automatic Duplexing Unit) MD-5007</b>	
Output speed (Colour/B/W)	311c: 31/31cpm (A4); 211c: 21/31cpm (A4)
Available paper size & weight	A3 - A5-R, 64-105gsm
Stack capacity	30 sheets (80gsm)
Dimensions (W x D x H)	633 x 626 x 110mm
Weight	Approx. 9kg
<b>Cassette Module MY-1020</b>	
Paper supply	600 sheets (80gsm), max. paper height: 66mm
Available paper size & weight	A3 - A5-R, 64-163gsm
Dimensions (W x D x H)	636 x 626 x 110mm
Weight	Approx. 5kg
<b>LCF (Large Capacity Feeder) MP-1503A4</b>	
Paper supply	1,500 sheets (80gsm), max. paper height: 165mm
Available paper size & weight	A4, 64-163gsm
Dimensions (W x D x H)	317 x 460 x 288mm
Weight	Approx. 8.5kg
<b>Finisher MJ-1019</b>	
<b>MJ-1020 (with saddle stitch)</b>	
Trays	2
Capacity (80gsm)	<b>Non-sort/Sort mode:</b> 1st bin : 1,000 sheets or 147 mm (A4, B5, A5-R) 500 sheets or 74 mm (A3, B4, A4-R, B5-R) 2nd bin : 1,000 sheets or 147 mm (A4, B5, A5-R) 500 sheets or 74 mm (A3, B4, A4-R, B5-R) <b>Staple mode:</b> 1st bin : 750 sheets or 110 mm (A4, B5, A5-R) 500 sheets or 74 mm (A3, B4, A4-R, B5-R) 2nd bin : 750 sheets or 110 mm (A4, B5, A5-R) 500 sheets or 74 mm (A3, B4, A4-R, B5-R) <b>Staple Capacity:</b> 50 sheets (A4, B5) 80gsm 30 sheets (A3, B4, A4-R) 80gsm
Available paper size & weight	A3 - A5-R, staple 64 - 105gsm, non-staple 64 - 256gsm
Staple position	Front: 1 position (slant), Rear: 1 position (parallel/slant), Centre: 2 positions (parallel)
<b>Saddle Stitch (MJ-1020)</b>	
Dimensions (W x D x H)	15 sheets A3 - A4R (10 sets at 15 sheets, or 20 sets at 10 sheets)
Weight	599mm x 615mm x 1,020mm <b>MJ-1019</b> Approx. 36kg <b>MJ-1020</b> Approx. 56kg
<b>Hole Punch Unit MJ-6002E (2 holes)</b>	
	Distance of punched holes: 80mm
<b>Hole Punch Unit MJ-6002F (4 holes - 80mm)</b>	
	Distance of punched holes: 80mm
<b>Hole Punch Unit MJ-6002S (4 holes - 21/70/21mm)</b>	
	Distance of punched holes: Interval between 1st and 2nd: 21mm
Dimensions (W x D x H)	76 x 581 x 373mm
Weight	Approx. 6kg
<b>DocBuilder Pro GB-1160</b>	
	Version 1.5 Standard Single Licence for Fiery® S300 Controller Option for Fiery® S300/X3e+ Controller
<b>Video Interface Kit KR-8005</b>	
	Required for Fiery® S300 Controller
<b>Control Panel Kit KR-8006</b>	
	Required for Fiery® X3e+ Controller
<b>ES-1000 Colour Profiler</b>	
<b>Graphic Arts Lite for X3e+ (GA-1121)</b>	
<b>Graphic Arts Package for S300 (GA-1131)</b>	

**TOSHIBA**  
**expand**  
your  
**possibilities**

**e-STUDIO 2100c**  
**e-STUDIO 3100c**

PRINT

COPY

SCAN

FAX

ORGANISE

MANAGE

DISTRIBUTE

STORE



**Toshiba TEC UK Imaging Systems Ltd**  
Abbey Cloisters, Abbey Green, Chertsey, Surrey KT16 8RB  
Tel: 01932 580100 Fax: 01932 580101

Windows and Windows 95/98/NT 4.0 are registered trademarks of Microsoft Group. Netware is a registered trademark of Novell, Inc. Macintosh is a registered trademark of Apple Computer, Inc. All other terms and product names may be trademarks or registered trademarks of their respective owners, and are hereby acknowledged. Design and specification subject to change without notice.

# Network Colour Solutions

For Corporate and Production environments

## Toshiba's multiple award-winning network colour MFDs just got better!

The new **e-STUDIO2100c** and **e-STUDIO3100c** deliver advanced features, high productivity and superior image quality for the dedicated colour user at a stunning 21 or 31 pages per minute.

Virtually every business needs colour today, but every user is different.

The e-STUDIO2100c and e-STUDIO3100c deliver powerful and versatile colour solutions for the higher volume office needs and the exacting demands of in-house print or Print On Demand production users.

Print, Scan and Copy – with high quality, high speed colour output. These devices are all your business will need to produce high impact professional colour documents.

Advanced networking from Electronics For Imaging gives access to all the finishing features on the e-STUDIO2100c/3100c right from your desktop. Whether it's a single page bulletin or a full colour stitched booklet, the e-STUDIO2100c/3100c offers all the features you want and the speed and quality you demand.



# ...High Volume **Colour Output**

Toshiba's sophisticated Inline Colour Printing System achieves high speed colour printing/copying with efficiency, image stability and superb reliability. This remarkable technology involves the simultaneous rotation of four drums, rather than the multiple rotation of just one drum as is the case in some other systems. It's this innovative Toshiba technology that allows significantly higher speed and performance.

The new models also feature high speed DCIT (Dual Compression Image Technology) that compresses scanned colour images in two stages, thus maintaining the very highest possible quality of image.

DCIT also works in combination with the Electronic Sorting feature to achieve a significant increase in the processing speed of dense and complex colour data.

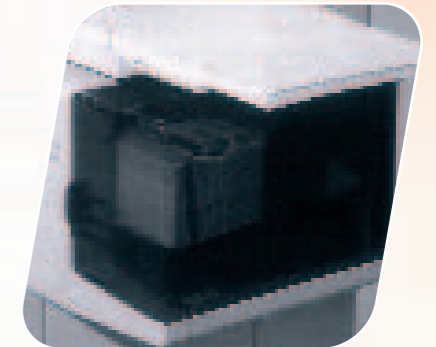
To support even higher levels of productivity, the Scan Once/Copy Many facility enables fast scanning and copying with less noise and reduced energy consumption. Advanced memory copy capabilities also enable other useful functions such as 4-in-1 copying.

Electronic Sorting is available on both systems as standard, which means that there is no need for a mechanical sorter. Electronic Sorting means you are no longer constrained by the physical number of bins on a mechanical sorter and enables continuous document sorting for large print or copy jobs.

This feature is in turn enabled through the e-STUDIO2100c/3100c's internal HDD that allows you to scan multiple pages in one go and even start setting up the next job while the first is being completed.

The addition of a finishing unit incorporating hole punch, saddle stitch and magazine sort will convert the e-STUDIO2100c/3100c into a fully fledged colour document production resource capable for example of creating and finishing complete full colour magazines.

The new e-STUDIO2100c/3100c will satisfy all your colour output needs with maximum efficiency, giving you greater versatility for print and copy of single and double-sided documents as well as the convenience of stapling or hole punch for multi page documents or booklets.



# Professional **Colour Reproduction.**

## High image clarity with excellent reproduction quality

The e-STUDIO2100c/3100c systems offer a number of advanced technologies and key features that maximise output quality and consistency in both copy and print.

With a resolution of up to 600 dpi and a depth of 256 gradations per process colour, together with exceptional sharpness through the use of image processing algorithms and Toshiba's unique image processing filter, the e-STUDIO2100c/3100c are the ideal choice for the production of high definition and lifelike images with superior detail.

Natural looking images and accurate colour reproduction are achieved without any of the artificiality of some colour output thanks to the advanced toner, developer and drum employed in the range. Toner particles are impregnated with a wax lubricant, reducing the amount of oil required for the fusing process. This results in crisp prints that are free of streaking and also means that it's possible to write on copies or prints with a ballpoint or highlighter pen.

Image stability is maintained during large print runs by Toshiba's image quality control systems and optimising algorithm.

This innovative Toshiba technology delivers what is truly amongst the best, most accurate, colour reproduction of any machine in the market.

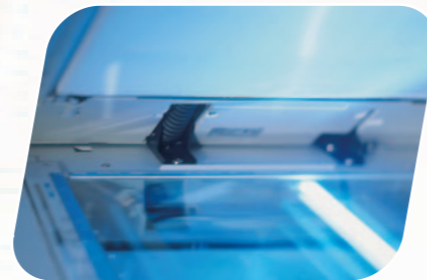
Various copy modes ensure optimum quality no matter what the original document type. **Text Mode** ensures that text is faithfully reproduced with unparalleled sharpness and clarity, while **Text/Photo Mode** offers the perfect automatic balance of quality for both text and graphics. **Photo Mode** reproduces the continuous tones of photographs with a high level of sensitivity and faithfulness. **Printed Image Mode** is specifically designed for the best possible reproduction of all manner of print originals, while **Map Mode** enhances the fine detail and very fine lines found on mapping materials so that no nuance or information is lost. **Advanced Image Mode** automatically distinguishes elements on a page containing many different types of image and selects the most appropriate mode for each item on that page to assure the optimum reproduction and maximum total image quality.

## Variety of Paper Sizes, Stock and Media

The reproduction of full page A3 + documents gives true edge-to-edge colour prints/copies ideally suited to the printing of larger format items such as posters and catalogues as well as standard A4 pieces.

Paper and media versatility also extends beyond size, with more options in terms of stock weight and thickness available via the integral cassettes, a large capacity feeder unit or the bypass feeder which features a robust construction and improved paper guides to accommodate heavy cards and other exotic media.

A variety of papers up to 280 gsm can be seamlessly handled and when producing OHPs a crisp result is obtained thanks to the wax-impregnated toner.



The e-STUDIO2100c/3100c also incorporate a unique **Waterproof Paper Mode**. Available only with Toshiba colour systems, this facility uses a specially designed pre-cut sheet and is suitable for all applications where previously pouch lamination would have been the only option.

These sheets are completely water and weatherproof when printed and work exclusively with Toshiba colour units thanks again to the use of wax impregnated toner particles.

Incorporation of the belt fusing method in these units also ensures the optimal fixation of toner as well as allowing the reproduction of areas of very bright, vivid, colour while retaining a high level of transparency in the rest of the document for the best presentation quality.

Scanning documents is made easy with the e-STUDIO2100c/3100c. Files can be accessed via many different applications and in various formats. TWAIN scanning allows scanned data to be imported into TWAIN compliant applications such as Adobe Photoshop, and Acrobat. The e-STUDIO2100c/3100c also support **Scan to Queue** allowing you to temporarily save data in the HDD of the Fiery® controller. Scanned data is platform and application independent and pages can be merged together to create brand new documents using **DocBuilder™**.

The e-STUDIO2100c/3100c also support **Scan to Mailbox** which allows data to be stored in the Fiery® Controller and accessed from any PC or Mac on the network via software applications or a Web Browser. **Scan to E-mail** allows you to scan documents and send them to any email address directly from the e-STUDIO2100c/3100c while **Scan to i-Fax** allows that same scanned data to be "faxed" via the Internet, thus reducing costs dramatically. Scan to Mailbox and Scan to E-mail both support the conversion of files into TIFF, JPEG and PDF formats.

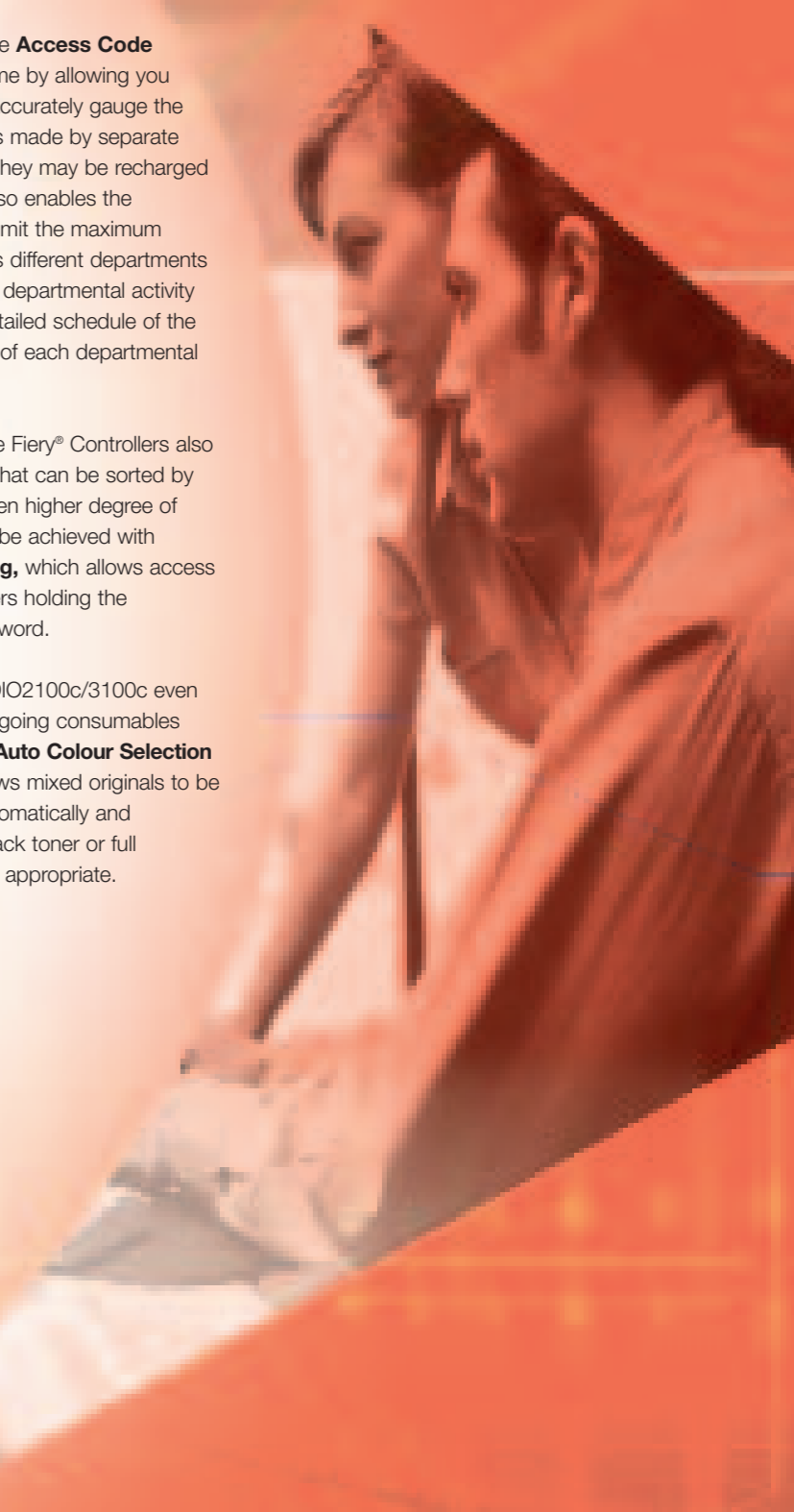
Ease of use in operation is extended into an equally user-friendly approach during routine maintenance. Productivity levels are maintained and downtime kept to an absolute minimum thanks to the easy-change cartridge system that allows toner replacement with clean hands!

All in all, the new e-STUDIO2100c/3100c colour systems are the obvious choice for the user who requires cost effective operation without compromising speed, quality and versatility.

For copy jobs, the **Access Code** function saves time by allowing you to instantly and accurately gauge the number of copies made by separate departments so they may be recharged accordingly. It also enables the administrator to limit the maximum number of copies different departments may make, while departmental activity lists provide a detailed schedule of the printing activities of each departmental user.

For print jobs, the Fiery® Controllers also record a job log that can be sorted by the client. An even higher degree of print control can be achieved with **Member Printing**, which allows access only to those users holding the appropriate password.

The new e-STUDIO2100c/3100c even minimise your ongoing consumables costs! Using the **Auto Colour Selection (ACS) Mode** allows mixed originals to be distinguished automatically and reproduced in black toner or full colour only when appropriate.

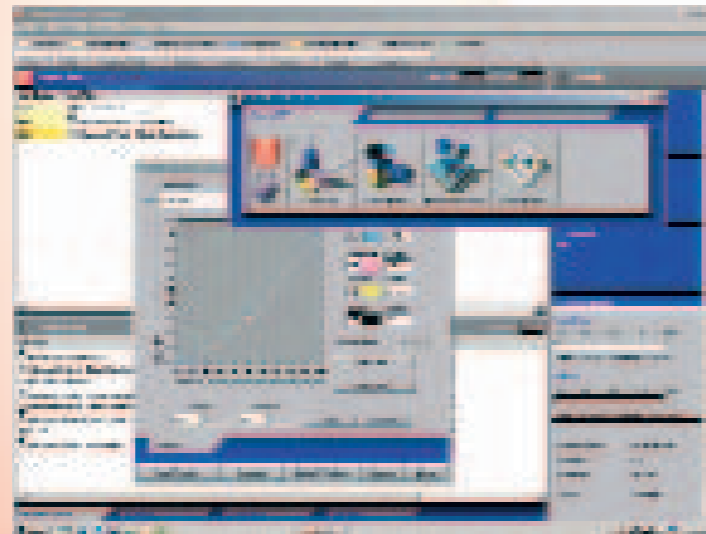


# EFI Fiery® controller

**The Fiery® Colour Print Controller allows you to connect your Toshiba e-STUDIO2100c/3100c to the network, providing a high-speed colour print and scan solution. Connecting is easy and seamless to all popular platforms and networks.**

Select the colour controller best suited to your particular network and printing needs: built-in, cost effective convenience of the Fiery® X3e + or the enhanced performance of the Fiery® S300 external controller.

Both units allow all the functionality of the e-STUDIO2100c/3100c to be shared across the network to all workgroups, departments and via the Internet. They support a higher level of productivity, advanced document management, seamless network integration and the assured quality of colour and mono images.



The Fiery® X3e+ Colour Controller represents the highest level of quality colour output of any entry-level embedded solution while its performance makes for simple short run digital colour printing. It also features an extremely user friendly driver interface giving users simple remote access to a variety of functions from their PCs and Macs.

For users requiring the maximum performance, the S300 Controller is a must! Ideally suited to mid-range and production printing requirements, this Controller combines performance with reliability, dependability and outstanding colour quality. The Fiery® S300 Controller also features network scanning capabilities.

#### **Command Workstation**

The Command Workstation 4.1 is an intuitive graphical user interface for managing jobs, print queues, and workflow from a centralised location with job control functions, security and a job log. Job Preview allows thumbnail and full-screen previews of any archived job in raster format, even if the job has been archived to a network server.

RIPped data can be viewed as thumbnails and the pages can be rearranged, deleted and reordered. The edited data can then be saved to the Fiery hard disk. These features are ideal for short-run printing and editing tasks performed by in-house Print on Demand users.

#### **Fiery® FreeForm2.1**

FreeForm allows the production of true one-to-one mailing pieces containing both common and variable elements that are specific to individual customers. Common elements are processed once and stored on the Fiery® Controller, while variable elements are automatically replaced for each page allowing you to send large amounts of data sharing the same graphics or contents but also containing personalised elements.

#### **DocBuilder™ & DocBuilder Pro™**

Document editing and job control are made easier with DocBuilder™. It allows you to work with the added convenience of thumbnail views of your documents, while pages made by different applications or scanned images can be pasted into one document in a simple, one-step operation. Installation of the optional DocBuilder Pro™ offers additional professional design capabilities for the creation of booklets, magazines or more complex presentation layouts.

#### **WebTools™**

Both the e-STUDIO2100c and the e-STUDIO3100c can be monitored through the use of WebTools™. Operating efficiency, printing conditions and optional attachments can all be checked by remote web access to ensure peak efficiency is maintained.

#### **Graphic Arts Package**

The optional Graphic Arts Package is focussed directly to the needs of both professional graphic and production users. It enhances the capabilities for proofing and workflow with features such as:

#### **Hot Folders:**

Predefined workflow for print output settings and job tickets that can be pre-programmed into a Hot Folder. The print file (PostScript and PDF) can then be simply dropped into this Hot Folder via "drag & drop" for immediate action.

#### **Auto Trapping:**

Advanced trapping functionality for all print colours (not only black)

#### **Spot-on:**

This option allows you to manage named colours on the Fiery® Controller including custom created and all industry standard colours including PANTONE, HKS, Toyo and DIC.

#### **Colour Profiler ES -1000 Support**

Simple and flexible, the EFI Colour Profiler is based on EFI's leadership in developing digital colour profiles and tools for use by the most demanding colour professionals. It is a turnkey application that enables the creation of ICC profiles with CMYK digital printers (ICC profiles accurately describe the colour response of printers and can be used in PCs, Macintosh® systems, and EFI controllers). The Profiler appeals to both the novice and advanced user.

The EFI Colour Profiler is an optional client-based kit that includes the EFI Spectrometer - a fast, hand held, colour measurement device. Colour information can be measured using individual patches or full strips of patches. The EFI Spectrometer can also be used as a densitometer, measuring the day-to-day fluctuations of printer inks and toners. Colour calibration with the EFI Spectrometer will compensate for these fluctuations.

